

**KRAS Antibody (C-term)**  
**Affinity Purified Rabbit Polyclonal Antibody (Pab)**  
**Catalog # AP16356B**

**Specification**

---

**KRAS Antibody (C-term) - Product Information**

Application	IF, WB, FC,E
Primary Accession	<a href="#">P01116</a>
Other Accession	<a href="#">P08644</a> , <a href="#">P32883</a> , <a href="#">NP_203524.1</a> , <a href="#">NP_004976.2</a>
Reactivity	Human, Mouse, Rat
Predicted	Rat
Host	Rabbit
Clonality	Polyclonal
Isotype	Rabbit IgG
Antigen Region	146-174

**KRAS Antibody (C-term) - Additional Information**

**Gene ID** 3845

**Other Names**

GTPase KRas, K-Ras 2, Ki-Ras, c-K-ras, c-Ki-ras, GTPase KRas, N-terminally processed, KRAS, KRAS2, RASK2

**Target/Specificity**

This KRAS antibody is generated from rabbits immunized with a KLH conjugated synthetic peptide between 146-174 amino acids from the C-terminal region of human KRAS.

**Dilution**

IF~~1:10~50  
WB~~1:2000  
FC~~1:10~50

**Format**

Purified polyclonal antibody supplied in PBS with 0.09% (W/V) sodium azide. This antibody is purified through a protein A column, followed by peptide affinity purification.

**Storage**

Maintain refrigerated at 2-8°C for up to 2 weeks. For long term storage store at -20°C in small aliquots to prevent freeze-thaw cycles.

**Precautions**

KRAS Antibody (C-term) is for research use only and not for use in diagnostic or therapeutic procedures.

**KRAS Antibody (C-term) - Protein Information**

**Name** KRAS

**Synonyms** KRAS2, RASK2

**Function** Ras proteins bind GDP/GTP and possess intrinsic GTPase activity (PubMed:[20949621](#)). Plays an important role in the regulation of cell proliferation (PubMed:[22711838](#), PubMed:[23698361](#)). Plays a role in promoting oncogenic events by inducing transcriptional silencing of tumor suppressor genes (TSGs) in colorectal cancer (CRC) cells in a ZNF304-dependent manner (PubMed:[24623306](#)).

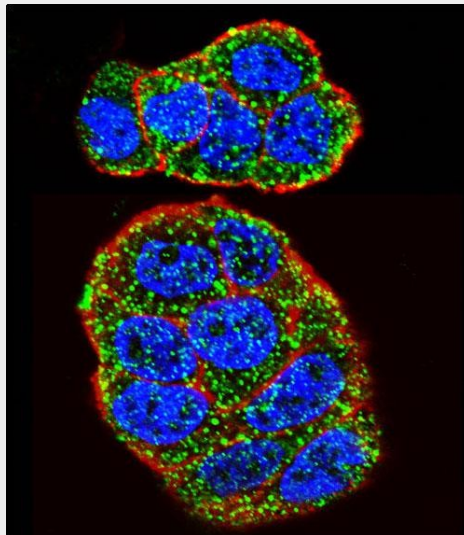
**Cellular Location**

Cell membrane; Lipid-anchor; Cytoplasmic side. Endomembrane system. Cytoplasm, cytosol

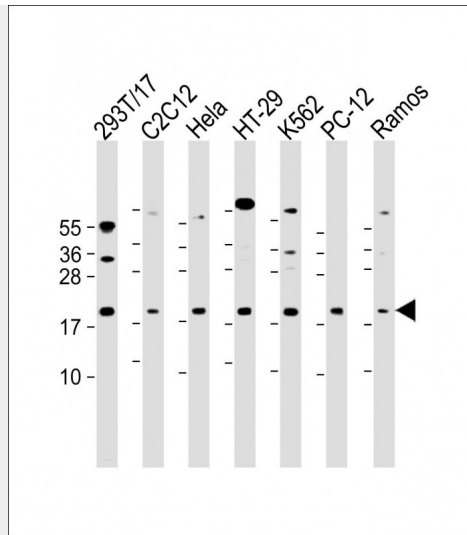
**KRAS Antibody (C-term) - Protocols**

Provided below are standard protocols that you may find useful for product applications.

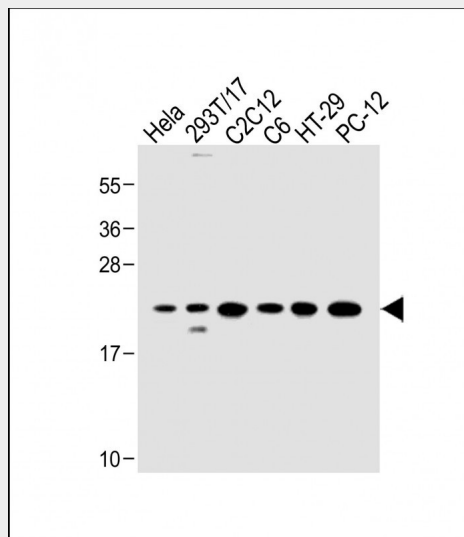
- [Western Blot](#)
- [Blocking Peptides](#)
- [Dot Blot](#)
- [Immunohistochemistry](#)
- [Immunofluorescence](#)
- [Immunoprecipitation](#)
- [Flow Cytometry](#)
- [Cell Culture](#)

**KRAS Antibody (C-term) - Images**

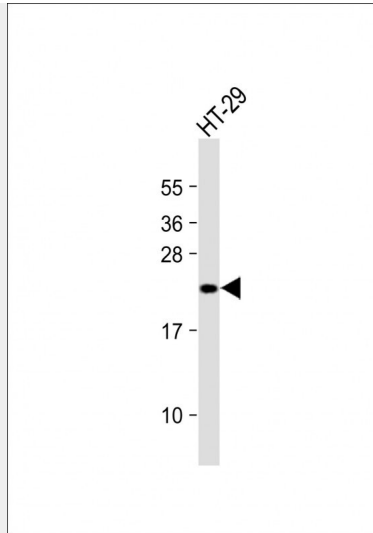
Confocal immunofluorescent analysis of KRAS Antibody (C-term)(Cat#AP16356b) with WiDr cell followed by Alexa Fluor 488-conjugated goat anti-rabbit IgG (green).Actin filaments have been labeled with Alexa Fluor 555 phalloidin (red).DAPI was used to stain the cell nuclear (blue).



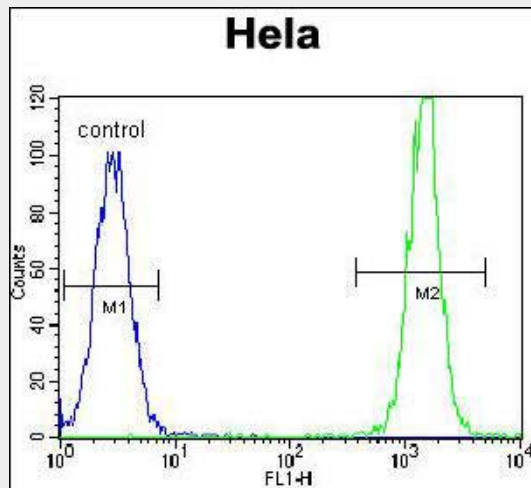
All lanes : Anti-KRAS Antibody (C-term) at 1:2000 dilution Lane 1: 293T/17 whole cell lysate Lane 2: C2C12 whole cell lysate Lane 3: HeLa whole cell lysate Lane 4: HT-29 whole cell lysate Lane 5: K562 whole cell lysate Lane 5: PC-12 whole cell lysate Lane 5: Ramos whole cell lysate Lysates/proteins at 20 µg per lane. Secondary Goat Anti-Rabbit IgG, (H+L), Peroxidase conjugated at 1/10000 dilution. Predicted band size : 22 kDa Blocking/Dilution buffer: 5% NFDm/TBST.



All lanes : Anti-KRAS Antibody (C-term) at 1:500 dilution Lane 1: HeLa whole cell lysate Lane 2: 293T/17 whole cell lysate Lane 3: C2C12 whole cell lysate Lane 4: C6 whole cell lysate Lane 5: HT-29 whole cell lysate Lane 6: PC-12 whole cell lysate Lysates/proteins at 20 µg per lane. Secondary Goat Anti-Rabbit IgG, (H+L), Peroxidase conjugated at 1/10000 dilution. Predicted band size : 22 kDa Blocking/Dilution buffer: 5% NFDm/TBST.



Anti-KRAS Antibody (C-term) at 1:2000 dilution + HT-29 whole cell lysate Lysates/proteins at 20 µg per lane. Secondary Goat Anti-Rabbit IgG, (H+L), Peroxidase conjugated at 1/10000 dilution. Predicted band size : 22 kDa Blocking/Dilution buffer: 5% NFDM/TBST.



KRAS Antibody (C-term) (Cat. #AP16356b) flow cytometric analysis of HeLa cells (right histogram) compared to a negative control cell (left histogram). FITC-conjugated goat-anti-rabbit secondary antibodies were used for the analysis.

### **KRAS Antibody (C-term) - Background**

This gene, a Kirsten ras oncogene homolog from the mammalian ras gene family, encodes a protein that is a member of the small GTPase superfamily. A single amino acid substitution is responsible for an activating mutation. The transforming protein that results is implicated in various malignancies, including lung adenocarcinoma, mucinous adenoma, ductal carcinoma of the pancreas and colorectal carcinoma. Alternative splicing leads to variants encoding two isoforms that differ in the C-terminal region.

### **KRAS Antibody (C-term) - References**

- Bruckman, K.C., et al. Oral Surg Oral Med Oral Pathol Oral Radiol Endod 110(5):632-637(2010)
- Wong, K.K., et al. Am. J. Pathol. 177(4):1611-1617(2010)
- Irahara, N., et al. Diagn. Mol. Pathol. 19(3):157-163(2010)

Carotenuto, P., et al. Pharmacogenomics 11(8):1169-1179(2010)  
Leventopoulos, G., et al. Clin. Exp. Rheumatol. 28(4):556-557(2010)