

**FCRL5 Antibody (Center)**  
**Affinity Purified Rabbit Polyclonal Antibody (Pab)**  
**Catalog # AP16338C**

**Specification**

---

**FCRL5 Antibody (Center) - Product Information**

Application	WB,E
Primary Accession	<a href="#">O96RD9</a>
Other Accession	<a href="#">NP_112571.2</a> , <a href="#">NP_001182317.1</a>
Reactivity	Human
Host	Rabbit
Clonality	Polyclonal
Isotype	Rabbit IgG
Calculated MW	106437
Antigen Region	302-331

**FCRL5 Antibody (Center) - Additional Information**

**Gene ID** 83416

**Other Names**

Fc receptor-like protein 5, FcR-like protein 5, FcRL5, BXMAS1, Fc receptor homolog 5, FcRH5, Immune receptor translocation-associated protein 2, CD307e, FCRL5, FCRH5, IRTA2

**Target/Specificity**

This FCRL5 antibody is generated from rabbits immunized with a KLH conjugated synthetic peptide between 302-331 amino acids from the Central region of human FCRL5.

**Dilution**

WB~~1:1000

**Format**

Purified polyclonal antibody supplied in PBS with 0.09% (W/V) sodium azide. This antibody is purified through a protein A column, followed by peptide affinity purification.

**Storage**

Maintain refrigerated at 2-8°C for up to 2 weeks. For long term storage store at -20°C in small aliquots to prevent freeze-thaw cycles.

**Precautions**

FCRL5 Antibody (Center) is for research use only and not for use in diagnostic or therapeutic procedures.

**FCRL5 Antibody (Center) - Protein Information**

**Name** FCRL5

**Synonyms** FCRH5, IRTA2

**Function** Plays an important role in B-cell response to antigen that acts both as a negative or positive coreceptor. Inhibits B-cell receptor (BCR) signaling in the absence of CR2 stimulation but engagement with CR2 and the BCR lead to a superior calcium response compared to CR2 and BCR costimulation (PubMed:[30107486](#)). May be involved in B-cell development and differentiation in peripheral lymphoid organs and may be useful markers of B-cell stages. May have an immunoregulatory role in marginal zone B-cells. May play a role in fertilization (By similarity).

#### Cellular Location

Cell membrane; Single-pass type I membrane protein

#### Tissue Location

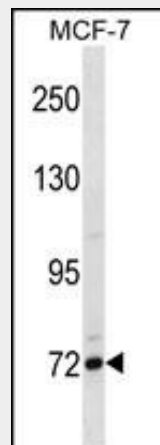
Expressed in marginal zone B-cells, immunoblasts, tonsillar germinal center centrocytes and in the intraepithelial and interfollicular regions of the tonsil. Expressed in many lymphoma cell lines and on hairy cell leukemia cells. Isoform 1, isoform 3, isoform 4 and isoform 5 are detected in lymph node, spleen, bone marrow, and small intestine with preponderance of isoform 3. Expressed in mature and memory B-cells and down-regulated in germinal center cells (at protein level).

### FCRL5 Antibody (Center) - Protocols

Provided below are standard protocols that you may find useful for product applications.

- [Western Blot](#)
- [Blocking Peptides](#)
- [Dot Blot](#)
- [Immunohistochemistry](#)
- [Immunofluorescence](#)
- [Immunoprecipitation](#)
- [Flow Cytometry](#)
- [Cell Culture](#)

### FCRL5 Antibody (Center) - Images



FCRL5 Antibody (Center) (Cat. #AP16338c) western blot analysis in MCF-7 cell line lysates (35ug/lane). This demonstrates the FCRL5 antibody detected the FCRL5 protein (arrow).

### FCRL5 Antibody (Center) - Background

FCRL5 is a member of the immunoglobulin receptor superfamily and the Fc-receptor like family. This gene and several other Fc receptor-like gene members are clustered on the long arm

of chromosome 1. The encoded protein is a single-pass type I membrane protein and contains 8 immunoglobulin-like C2-type domains. This gene is implicated in B cell development and lymphomagenesis. Alternatively spliced transcript variants encoding different isoforms have been identified.

#### **FCRL5 Antibody (Center) - References**

- Lee, J.E., et al. Cell Prolif. 43(4):378-384(2010)  
Simmonds, M.J., et al. Clin. Endocrinol. (Oxf) (2010) In press :  
Davila, S., et al. Genes Immun. 11(3):232-238(2010)  
Tang, X., et al. Tissue Antigens 74(4):314-316(2009)  
Kazemi, T., et al. Cancer Immunol. Immunother. 58(6):989-996(2009)