

**RALY Antibody (Center)**  
**Affinity Purified Rabbit Polyclonal Antibody (Pab)**  
**Catalog # AP16333c**

**Specification**

---

**RALY Antibody (Center) - Product Information**

Application	WB,E
Primary Accession	<a href="#">O9UKM9</a>
Other Accession	<a href="#">NP_057951.1</a> , <a href="#">NP_031393.2</a>
Reactivity	Human
Host	Rabbit
Clonality	Polyclonal
Isotype	Rabbit IgG
Calculated MW	32463
Antigen Region	75-103

**RALY Antibody (Center) - Additional Information**

**Gene ID** 22913

**Other Names**

RNA-binding protein Raly, Autoantigen p542, Heterogeneous nuclear ribonucleoprotein C-like 2, hnRNP core protein C-like 2, hnRNP associated with lethal yellow protein homolog, RALY, HNRPCL2, P542

**Target/Specificity**

This RALY antibody is generated from rabbits immunized with a KLH conjugated synthetic peptide between 75-103 amino acids from the Central region of human RALY.

**Dilution**

WB~~1:1000

**Format**

Purified polyclonal antibody supplied in PBS with 0.09% (W/V) sodium azide. This antibody is purified through a protein A column, followed by peptide affinity purification.

**Storage**

Maintain refrigerated at 2-8°C for up to 2 weeks. For long term storage store at -20°C in small aliquots to prevent freeze-thaw cycles.

**Precautions**

RALY Antibody (Center) is for research use only and not for use in diagnostic or therapeutic procedures.

**RALY Antibody (Center) - Protein Information**

**Name** RALY

### Synonyms HNRPCL2, P542

**Function** RNA-binding protein that acts as a transcriptional cofactor for cholesterol biosynthetic genes in the liver. Binds the lipid- responsive non-coding RNA LeXis and is required for LeXis-mediated effect on cholesterologenesis (By similarity). May be a heterogeneous nuclear ribonucleoprotein (hnRNP) (PubMed:[9376072](#)).

### Cellular Location

Nucleus {ECO:0000250|UniProtKB:Q64012}.

### Tissue Location

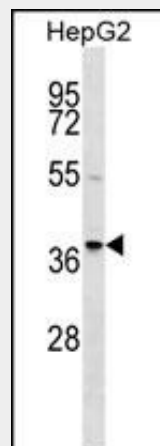
Expressed in heart, brain, lung, liver, skeletal muscle, kidney and pancreas. Weakly expressed in placenta

## RALY Antibody (Center) - Protocols

Provided below are standard protocols that you may find useful for product applications.

- [Western Blot](#)
- [Blocking Peptides](#)
- [Dot Blot](#)
- [Immunohistochemistry](#)
- [Immunofluorescence](#)
- [Immunoprecipitation](#)
- [Flow Cytometry](#)
- [Cell Culture](#)

## RALY Antibody (Center) - Images



RALY Antibody (Center) (Cat. #AP16333c) western blot analysis in HepG2 cell line lysates (35ug/lane). This demonstrates the RALY antibody detected the RALY protein (arrow).

## RALY Antibody (Center) - Background

In infectious mononucleosis, anti-EBNA-1 antibodies are produced which cross-react with multiple normal human proteins. The cross-reactivity is due to anti-gly/ala antibodies that cross-react with host proteins containing configurations like those in the EBNA-1 repeat. One such antigen is RALY which is a member of the heterogeneous nuclear ribonucleoprotein gene family. [provided by

RefSeq].

### **RALY Antibody (Center) - References**

Rose, J.E., et al. Mol. Med. 16 (7-8), 247-253 (2010) :  
Sugiyama, N., et al. Mol. Cell Proteomics 6(6):1103-1109(2007)  
Matsuoka, S., et al. Science 316(5828):1160-1166(2007)  
Olsen, J.V., et al. Cell 127(3):635-648(2006)  
Olsen, J.V., et al. Cell 127(3):635-648(2006)