

RASD2 Antibody (Center)
Affinity Purified Rabbit Polyclonal Antibody (Pab)
Catalog # AP16330c

Specification

RASD2 Antibody (Center) - Product Information

Application	WB,E
Primary Accession	O96D21
Other Accession	NP_055125.2
Reactivity	Human
Host	Rabbit
Clonality	Polyclonal
Isotype	Rabbit IgG
Calculated MW	30366
Antigen Region	86-114

RASD2 Antibody (Center) - Additional Information

Gene ID 23551

Other Names

GTP-binding protein Rhes, Ras homolog enriched in striatum, Tumor endothelial marker 2, RASD2, TEM2

Target/Specificity

This RASD2 antibody is generated from rabbits immunized with a KLH conjugated synthetic peptide between 86-114 amino acids from the Central region of human RASD2.

Dilution

WB~~1:1000

Format

Purified polyclonal antibody supplied in PBS with 0.09% (W/V) sodium azide. This antibody is purified through a protein A column, followed by peptide affinity purification.

Storage

Maintain refrigerated at 2-8°C for up to 2 weeks. For long term storage store at -20°C in small aliquots to prevent freeze-thaw cycles.

Precautions

RASD2 Antibody (Center) is for research use only and not for use in diagnostic or therapeutic procedures.

RASD2 Antibody (Center) - Protein Information

Name RASD2

Synonyms TEM2

Function GTPase signaling protein that binds to and hydrolyzes GTP. Regulates signaling pathways involving G-proteins-coupled receptor and heterotrimeric proteins such as GNB1, GNB2 and GNB3. May be involved in selected striatal competencies, mainly locomotor activity and motor coordination.

Cellular Location

Cell membrane; Lipid-anchor

Tissue Location

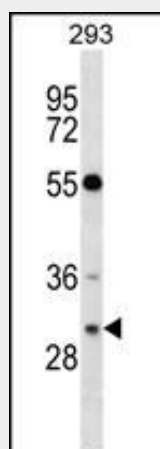
Pancreatic endocrine cells (islets of Langerhans).

RASD2 Antibody (Center) - Protocols

Provided below are standard protocols that you may find useful for product applications.

- [Western Blot](#)
- [Blocking Peptides](#)
- [Dot Blot](#)
- [Immunohistochemistry](#)
- [Immunofluorescence](#)
- [Immunoprecipitation](#)
- [Flow Cytometry](#)
- [Cell Culture](#)

RASD2 Antibody (Center) - Images



RASD2 Antibody (Center) (Cat. #AP16330c) western blot analysis in 293 cell line lysates (35ug/lane). This demonstrates the RASD2 antibody detected the RASD2 protein (arrow).

RASD2 Antibody (Center) - Background

RASD2 is a Ras-related protein that enriched in striatum. The product of this gene binds to GTP and possesses intrinsic GTPase activity. The gene belongs to the Ras superfamily of small GTPases. The exact function of this gene is unknown, but most striatum-specific mRNAs characterized to date encode components of signal transduction cascades.

RASD2 Antibody (Center) - References

Hill, C., et al. Cell. Physiol. Biochem. 23 (1-3), 1-8 (2009) :
Liu, Y.L., et al. Biol. Psychiatry 64(9):789-796(2008)
Thapliyal, A., et al. Am. J. Physiol., Cell Physiol. 295 (5), C1417-C1426 (2008) :
Agretti, P., et al. J. Endocrinol. Invest. 30(4):279-284(2007)
Taylor, J.P., et al. Biochem. Biophys. Res. Commun. 349(2):809-815(2006)