

MOCS2 Antibody (N-term)
Affinity Purified Rabbit Polyclonal Antibody (Pab)
Catalog # AP16279a

Specification

MOCS2 Antibody (N-term) - Product Information

Application	WB,E
Primary Accession	O96007
Other Accession	NP_004522.1
Reactivity	Human
Host	Rabbit
Clonality	Polyclonal
Isotype	Rabbit IgG
Calculated MW	20944
Antigen Region	14-43

MOCS2 Antibody (N-term) - Additional Information

Gene ID 4338

Other Names

Molybdopterin synthase catalytic subunit {ECO:0000255|HAMAP-Rule:MF_03052}, 28112 {ECO:0000255|HAMAP-Rule:MF_03052}, MOCO1-B, Molybdenum cofactor synthesis protein 2 large subunit {ECO:0000255|HAMAP-Rule:MF_03052}, Molybdenum cofactor synthesis protein 2B {ECO:0000255|HAMAP-Rule:MF_03052}, MOCS2B {ECO:0000255|HAMAP-Rule:MF_03052}, Molybdopterin-synthase large subunit, MPT synthase large subunit, MOCS2 {ECO:0000255|HAMAP-Rule:MF_03052}, MCBPE, MOCO1

Target/Specificity

This MOCS2 antibody is generated from rabbits immunized with a KLH conjugated synthetic peptide between 14-43 amino acids from the N-terminal region of human MOCS2.

Dilution

WB~~1:1000

Format

Purified polyclonal antibody supplied in PBS with 0.09% (W/V) sodium azide. This antibody is purified through a protein A column, followed by peptide affinity purification.

Storage

Maintain refrigerated at 2-8°C for up to 2 weeks. For long term storage store at -20°C in small aliquots to prevent freeze-thaw cycles.

Precautions

MOCS2 Antibody (N-term) is for research use only and not for use in diagnostic or therapeutic procedures.

MOCS2 Antibody (N-term) - Protein Information

Name MOCS2 {ECO:0000255|HAMAP-Rule:MF_03052}

Synonyms MCBPE, MOCO1

Function Catalytic subunit of the molybdopterin synthase complex, a complex that catalyzes the conversion of precursor Z into molybdopterin. Acts by mediating the incorporation of 2 sulfur atoms from thiocarboxylated MOCS2A into precursor Z to generate a dithiolene group.

Cellular Location

Cytoplasm, cytosol {ECO:0000255|HAMAP- Rule:MF_03052, ECO:0000269|PubMed:15073332}

Tissue Location

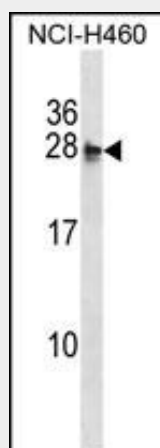
Highest levels are found in heart and skeletal muscle. Lower levels are present in brain, kidney and pancreas. Very low levels are found in lung and peripheral blood leukocytes

MOCS2 Antibody (N-term) - Protocols

Provided below are standard protocols that you may find useful for product applications.

- [Western Blot](#)
- [Blocking Peptides](#)
- [Dot Blot](#)
- [Immunohistochemistry](#)
- [Immunofluorescence](#)
- [Immunoprecipitation](#)
- [Flow Cytometry](#)
- [Cell Culture](#)

MOCS2 Antibody (N-term) - Images



MOCS2 Antibody (N-term) (Cat. #AP16279a) western blot analysis in NCI-H460 cell line lysates (35ug/lane). This demonstrates the MOCS2 antibody detected the MOCS2 protein (arrow).

MOCS2 Antibody (N-term) - Background

Eukaryotic molybdoenzymes use a unique molybdenum cofactor (MoCo) consisting of a pterin, termed molybdopterin, and the catalytically active metal molybdenum. MoCo is synthesized from precursor Z by the heterodimeric enzyme molybdopterin synthase. The large and small subunits of molybdopterin synthase are both encoded

from this gene by overlapping open reading frames. The proteins were initially thought to be encoded from a bicistronic transcript. They are now thought to be encoded from monocistronic transcripts. Alternatively spliced transcripts have been found for this locus that encode the large and small subunits.

MOCS2 Antibody (N-term) - References

- Per, H., et al. Brain Dev. 29(6):365-368(2007)
- Hahnewald, R., et al. Mol. Genet. Metab. 89(3):210-213(2006)
- Beausoleil, S.A., et al. Nat. Biotechnol. 24(10):1285-1292(2006)
- Leimkuhler, S., et al. Hum. Genet. 117(6):565-570(2005)
- Matthies, A., et al. Proc. Natl. Acad. Sci. U.S.A. 101(16):5946-5951(2004)