

**TNFSF18 Antibody (Center)**  
**Affinity Purified Rabbit Polyclonal Antibody (Pab)**  
**Catalog # AP16250C**

**Specification**

---

**TNFSF18 Antibody (Center) - Product Information**

Application	WB,E
Primary Accession	<a href="#">O9UNG2</a>
Other Accession	<a href="#">NP_005083.2</a>
Reactivity	Human
Host	Rabbit
Clonality	Polyclonal
Isotype	Rabbit IgG
Antigen Region	114-143

**TNFSF18 Antibody (Center) - Additional Information**

**Gene ID** 8995

**Other Names**

Tumor necrosis factor ligand superfamily member 18, Activation-inducible TNF-related ligand, AITRL, Glucocorticoid-induced TNF-related ligand, hGITRL, TNFSF18, AITRL, GITRL, TL6

**Target/Specificity**

This TNFSF18 antibody is generated from rabbits immunized with a KLH conjugated synthetic peptide between 114-143 amino acids from the Central region of human TNFSF18.

**Dilution**

WB~~1:1000

**Format**

Purified polyclonal antibody supplied in PBS with 0.09% (W/V) sodium azide. This antibody is purified through a protein A column, followed by peptide affinity purification.

**Storage**

Maintain refrigerated at 2-8°C for up to 2 weeks. For long term storage store at -20°C in small aliquots to prevent freeze-thaw cycles.

**Precautions**

TNFSF18 Antibody (Center) is for research use only and not for use in diagnostic or therapeutic procedures.

**TNFSF18 Antibody (Center) - Protein Information**

**Name** TNFSF18 ([HGNC:11932](#))

**Synonyms** AITRL, GITRL, TL6

**Function** Cytokine that binds to TNFRSF18/AITR/GITR. Regulates T-cell responses. Can function as costimulator and lower the threshold for T- cell activation and T-cell proliferation. Important for interactions between activated T-lymphocytes and endothelial cells. Mediates activation of NF-kappa-B. Triggers increased phosphorylation of STAT1 and up-regulates expression of VCAM1 and ICAM1 (PubMed:[23892569](#)). Promotes leukocyte adhesion to endothelial cells (PubMed:[23892569](#)). Regulates migration of monocytes from the splenic reservoir to sites of inflammation (By similarity).

#### **Cellular Location**

Cell membrane; Single-pass type II membrane protein

#### **Tissue Location**

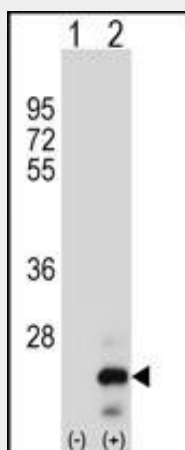
Expressed at high levels in the small intestine, ovary, testis, kidney and endothelial cells

### **TNFSF18 Antibody (Center) - Protocols**

Provided below are standard protocols that you may find useful for product applications.

- [Western Blot](#)
- [Blocking Peptides](#)
- [Dot Blot](#)
- [Immunohistochemistry](#)
- [Immunofluorescence](#)
- [Immunoprecipitation](#)
- [Flow Cytometry](#)
- [Cell Culture](#)

### **TNFSF18 Antibody (Center) - Images**



Western blot analysis of TNFSF18 (arrow) using rabbit polyclonal TNFSF18 Antibody (Center) (Cat. #AP16250c). 293 cell lysates (2 ug/lane) either nontransfected (Lane 1) or transiently transfected (Lane 2) with the TNFSF18 gene.

### **TNFSF18 Antibody (Center) - Background**

The protein encoded by this gene is a cytokine that belongs to the tumor necrosis factor (TNF) ligand family. This cytokine is a ligand for receptor TNFRSF18/AITR/GITR. It has been shown to modulate T lymphocyte survival in peripheral tissues. This cytokine is also found to be expressed in endothelial cells, and is

thought to be important for interaction between T lymphocytes and endothelial cells.

#### **TNFSF18 Antibody (Center) - References**

- Bailey, S.D., et al. Diabetes Care 33(10):2250-2253(2010)  
Han, S., et al. Hum. Immunol. 71(7):727-730(2010)  
Mosbruger, T.L., et al. J. Infect. Dis. 201(9):1371-1380(2010)  
Rajaraman, P., et al. Cancer Epidemiol. Biomarkers Prev. 19(5):1356-1361(2010)  
Davila, S., et al. Genes Immun. 11(3):232-238(2010)