

RUNDC1 Antibody (C-term)
Affinity Purified Rabbit Polyclonal Antibody (Pab)
Catalog # AP16243b

Specification

RUNDC1 Antibody (C-term) - Product Information

Application	WB,E
Primary Accession	O96C34
Other Accession	Q0VDN7 , NP_775102.2
Reactivity	Mouse
Host	Rabbit
Clonality	Polyclonal
Isotype	Rabbit IgG
Calculated MW	67643
Antigen Region	509-537

RUNDC1 Antibody (C-term) - Additional Information

Other Names

RUN domain-containing protein 1, RUNDC1

Target/Specificity

This RUNDC1 antibody is generated from rabbits immunized with a KLH conjugated synthetic peptide between 509-537 amino acids from the C-terminal region of human RUNDC1.

Dilution

WB~~1:1000

Format

Purified polyclonal antibody supplied in PBS with 0.09% (W/V) sodium azide. This antibody is purified through a protein A column, followed by peptide affinity purification.

Storage

Maintain refrigerated at 2-8°C for up to 2 weeks. For long term storage store at -20°C in small aliquots to prevent freeze-thaw cycles.

Precautions

RUNDC1 Antibody (C-term) is for research use only and not for use in diagnostic or therapeutic procedures.

RUNDC1 Antibody (C-term) - Protein Information

Name RUNDC1

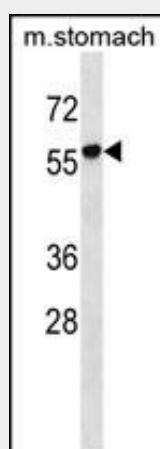
Function May play a role as p53/TP53 inhibitor and thus may have oncogenic activity.

RUNDC1 Antibody (C-term) - Protocols

Provided below are standard protocols that you may find useful for product applications.

- [Western Blot](#)
- [Blocking Peptides](#)
- [Dot Blot](#)
- [Immunohistochemistry](#)
- [Immunofluorescence](#)
- [Immunoprecipitation](#)
- [Flow Cytometry](#)
- [Cell Culture](#)

RUNDC1 Antibody (C-term) - Images



RUNDC1 Antibody (C-term) (Cat. #AP16243b) western blot analysis in mouse stomach tissue lysates (35ug/lane). This demonstrates the RUNDC1 antibody detected the RUNDC1 protein (arrow).

RUNDC1 Antibody (C-term) - Background

RUNDC1 may play a role as p53/TP53 inhibitor and thus may have oncogenic activity.

RUNDC1 Antibody (C-term) - References

Ota, T., et al. Nat. Genet. 36(1):40-45(2004)