

CLPTM1L Antibody (C-term)
Affinity Purified Rabbit Polyclonal Antibody (Pab)
Catalog # AP16233b

Specification

CLPTM1L Antibody (C-term) - Product Information

Application	WB,E
Primary Accession	O96KA5
Other Accession	NP_110409.2
Reactivity	Human
Host	Rabbit
Clonality	Polyclonal
Isotype	Rabbit IgG
Calculated MW	62229
Antigen Region	370-399

CLPTM1L Antibody (C-term) - Additional Information

Gene ID 81037

Other Names

Cleft lip and palate transmembrane protein 1-like protein, CLPTM1-like protein, Cisplatin resistance-related protein 9, CRR9p, CLPTM1L, CRR9

Target/Specificity

This CLPTM1L antibody is generated from rabbits immunized with a KLH conjugated synthetic peptide between 370-399 amino acids from the C-terminal region of human CLPTM1L.

Dilution

WB~~1:1000

Format

Purified polyclonal antibody supplied in PBS with 0.09% (W/V) sodium azide. This antibody is purified through a protein A column, followed by peptide affinity purification.

Storage

Maintain refrigerated at 2-8°C for up to 2 weeks. For long term storage store at -20°C in small aliquots to prevent freeze-thaw cycles.

Precautions

CLPTM1L Antibody (C-term) is for research use only and not for use in diagnostic or therapeutic procedures.

CLPTM1L Antibody (C-term) - Protein Information

Name CLPTM1L

Synonyms CRR9

Function Scramblase that mediates the translocation of glucosaminylphosphatidylinositol (alpha-D-GlcN-(1-6)-(1,2-diacyl-sn-glycero-3-phospho)-1D-myo-inositol, GlcN-PI) across the endoplasmic reticulum (ER) membrane, from the cytosolic leaflet to the luminal leaflet of the ER membrane, where it participates in the biosynthesis of glycosylphosphatidylinositol (GPI) (PubMed:[35344438](#)). GPI is a lipid glycoconjugate involved in post-translational modification of proteins (PubMed:[35344438](#)). Can also translocate 1,2-diacyl-sn-glycero-3-phospho-(1D-myo-inositol) (phosphatidylinositol or PI), as well as several other phospholipids (1,2-diacyl-sn-glycero-3-phosphocholine, 1,2-diacyl-sn-glycero-3-phosphoethanolamine), and N-acetylglucosaminylphosphatidylinositol (GlcNAc-PI) in vitro (PubMed:[35344438](#)).

Cellular Location

Endoplasmic reticulum membrane; Multi-pass membrane protein

Tissue Location

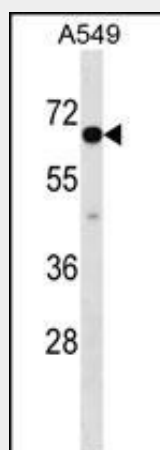
Ubiquitously expressed.

CLPTM1L Antibody (C-term) - Protocols

Provided below are standard protocols that you may find useful for product applications.

- [Western Blot](#)
- [Blocking Peptides](#)
- [Dot Blot](#)
- [Immunohistochemistry](#)
- [Immunofluorescence](#)
- [Immunoprecipitation](#)
- [Flow Cytometry](#)
- [Cell Culture](#)

CLPTM1L Antibody (C-term) - Images



CLPTM1L Antibody (C-term) (Cat. #AP16233b) western blot analysis in A549 cell line lysates (35ug/lane). This demonstrates the CLPTM1L antibody detected the CLPTM1L protein (arrow).

CLPTM1L Antibody (C-term) - Background

CLPTM1L enhances cisplatin-mediated apoptosis, when overexpressed.

CLPTM1L Antibody (C-term) - References

Liu, Z., et al. Carcinogenesis 31(11):1977-1981(2010) Hsiung, C.A., et al. PLoS Genet. 6 (8) (2010) :
Truong, T., et al. J. Natl. Cancer Inst. 102(13):959-971(2010) Pooley, K.A., et al. Cancer Epidemiol.
Biomarkers Prev. 19(7):1862-1865(2010) Turnbull, C., et al. Nat. Genet. 42(7):604-607(2010)