

HMGCL Antibody (Center)
Affinity Purified Rabbit Polyclonal Antibody (Pab)
Catalog # AP16221c**Specification**

HMGCL Antibody (Center) - Product Information

Application	WB,E
Primary Accession	P35914
Other Accession	Q8HXZ6 , Q29448 , NP_000182.2 , NP_001159531.1
Reactivity	Human
Predicted	Bovine, Monkey
Host	Rabbit
Clonality	Polyclonal
Isotype	Rabbit IgG
Calculated MW	34360
Antigen Region	161-190

HMGCL Antibody (Center) - Additional Information**Gene ID** 3155**Other Names**Hydroxymethylglutaryl-CoA lyase, mitochondrial, HL, HMG-CoA lyase,
3-hydroxy-3-methylglutarate-CoA lyase, HMGCL**Target/Specificity**

This HMGCL antibody is generated from rabbits immunized with a KLH conjugated synthetic peptide between 161-190 amino acids from the Central region of human HMGCL.

Dilution

WB~~1:1000

Format

Purified polyclonal antibody supplied in PBS with 0.09% (W/V) sodium azide. This antibody is purified through a protein A column, followed by peptide affinity purification.

Storage

Maintain refrigerated at 2-8°C for up to 2 weeks. For long term storage store at -20°C in small aliquots to prevent freeze-thaw cycles.

Precautions

HMGCL Antibody (Center) is for research use only and not for use in diagnostic or therapeutic procedures.

HMGCL Antibody (Center) - Protein Information**Name** HMGCL

Function Mitochondrial 3-hydroxymethyl-3-methylglutaryl-CoA lyase that catalyzes a cation-dependent cleavage of (S)-3-hydroxy-3-methylglutaryl-CoA into acetyl-CoA and acetoacetate, a key step in ketogenesis. Terminal step in leucine catabolism. Ketone bodies (beta-hydroxybutyrate, acetoacetate and acetone) are essential as an alternative source of energy to glucose, as lipid precursors and as regulators of metabolism.

Cellular Location

Mitochondrion matrix {ECO:0000250|UniProtKB:P38060}. Peroxisome {ECO:0000250|UniProtKB:P38060}. Note=Unprocessed form is peroxisomal {ECO:0000250|UniProtKB:P38060}

Tissue Location

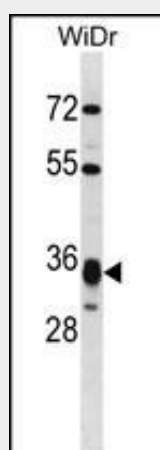
Highest expression in liver. Expressed in pancreas, kidney, intestine, testis, fibroblasts and lymphoblasts. Very low expression in brain and skeletal muscle. The relative expression of isoform 2 (at mRNA level) is highest in heart (30%), skeletal muscle (22%), and brain (14%).

HMGCL Antibody (Center) - Protocols

Provided below are standard protocols that you may find useful for product applications.

- [Western Blot](#)
- [Blocking Peptides](#)
- [Dot Blot](#)
- [Immunohistochemistry](#)
- [Immunofluorescence](#)
- [Immunoprecipitation](#)
- [Flow Cytometry](#)
- [Cell Culture](#)

HMGCL Antibody (Center) - Images



HMGCL Antibody (Center) (Cat. #AP16221c) western blot analysis in WiDr cell line lysates (35ug/lane). This demonstrates the HMGCL antibody detected the HMGCL protein (arrow).

HMGCL Antibody (Center) - Background

HMGCL belongs to the HMG-CoA lyase family. It is a mitochondrial enzyme that catalyzes the final step of leucine degradation and plays a key role in ketone body formation. Mutations in this gene are associated with HMG-CoA lyase

deficiency. Alternatively spliced transcript variants encoding different isoforms have been found for this gene. [provided by RefSeq].

HMGCL Antibody (Center) - References

Fu, Z., et al. J. Biol. Chem. 285(34):26341-26349(2010)
Pierron, S., et al. Arch Pediatr 17(1):10-13(2010)
Menao, S., et al. Hum. Mutat. 30 (3), E520-E529 (2009) :
Lin, W.D., et al. Clin. Chim. Acta 401 (1-2), 33-36 (2009) :
Carrasco, P., et al. Mol. Genet. Metab. 91(2):120-127(2007)