

THAP11 Antibody (N-term)
Affinity Purified Rabbit Polyclonal Antibody (Pab)
Catalog # AP16197a

Specification

THAP11 Antibody (N-term) - Product Information

| | |
|-------------------|-------------------------------------------------------------------------------|
| Application | WB,E |
| Primary Accession | O96EK4 |
| Other Accession | O9JJD0 , A5PKF5 , NP_065190.2 |
| Reactivity | Human |
| Predicted | Bovine, Mouse |
| Host | Rabbit |
| Clonality | Polyclonal |
| Isotype | Rabbit IgG |
| Calculated MW | 34455 |
| Antigen Region | 67-96 |

THAP11 Antibody (N-term) - Additional Information

Gene ID 57215

Other Names

THAP domain-containing protein 11, THAP11

Target/Specificity

This THAP11 antibody is generated from rabbits immunized with a KLH conjugated synthetic peptide between 67-96 amino acids from the N-terminal region of human THAP11.

Dilution

WB~~1:1000

Format

Purified polyclonal antibody supplied in PBS with 0.09% (W/V) sodium azide. This antibody is purified through a protein A column, followed by peptide affinity purification.

Storage

Maintain refrigerated at 2-8°C for up to 2 weeks. For long term storage store at -20°C in small aliquots to prevent freeze-thaw cycles.

Precautions

THAP11 Antibody (N-term) is for research use only and not for use in diagnostic or therapeutic procedures.

THAP11 Antibody (N-term) - Protein Information

Name THAP11

Function Transcriptional repressor that plays a central role for embryogenesis and the

pluripotency of embryonic stem (ES) cells. Sequence-specific DNA-binding factor that represses gene expression in pluripotent ES cells by directly binding to key genetic loci and recruiting epigenetic modifiers (By similarity).

Cellular Location

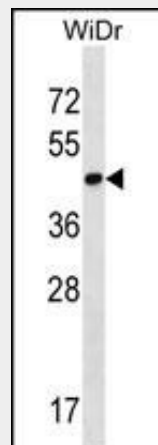
Nucleus. Cytoplasm. Note=May be regulated by shuttling of the protein between the cytoplasm and nucleus.

THAP11 Antibody (N-term) - Protocols

Provided below are standard protocols that you may find useful for product applications.

- [Western Blot](#)
- [Blocking Peptides](#)
- [Dot Blot](#)
- [Immunohistochemistry](#)
- [Immunofluorescence](#)
- [Immunoprecipitation](#)
- [Flow Cytometry](#)
- [Cell Culture](#)

THAP11 Antibody (N-term) - Images



THAP11 Antibody (N-term) (Cat. #AP16197a) western blot analysis in WiDr cell line lysates (35ug/lane). This demonstrates the THAP11 antibody detected the THAP11 protein (arrow).

THAP11 Antibody (N-term) - Background

The protein encoded by this gene contains a THAP domain, which is a conserved DNA-binding domain that has striking similarity to the site-specific DNA-binding domain (DBD) of *Drosophila* P element transposases.

THAP11 Antibody (N-term) - References

- Zhu, C.Y., et al. *Cell Death Differ.* 16(3):395-405(2009)
Dejosez, M., et al. *Cell* 133(7):1162-1174(2008)
Roussigne, M., et al. *Trends Biochem. Sci.* 28(2):66-69(2003)
Ueki, N., et al. *Nat. Biotechnol.* 16(13):1338-1342(1998)
Li, S.H., et al. *Genomics* 16(3):572-579(1993)