

Mouse Stradb Antibody (C-term)
Affinity Purified Rabbit Polyclonal Antibody (Pab)
Catalog # AP16163b

Specification

Mouse Stradb Antibody (C-term) - Product Information

Application	WB,E
Primary Accession	O8K4T3
Other Accession	NP_766244.4
Reactivity	Mouse
Host	Rabbit
Clonality	Polyclonal
Isotype	Rabbit IgG
Calculated MW	46832
Antigen Region	390-418

Mouse Stradb Antibody (C-term) - Additional Information

Gene ID 227154

Other Names

STE20-related kinase adapter protein beta, STRAD beta, Amyotrophic lateral sclerosis 2 chromosomal region candidate gene 2 protein homolog, ILP-interacting protein homolog, Polyploidy-associated protein kinase, Pseudokinase ALS2CR2, Stradb, Als2cr2, Papk, Syradb

Target/Specificity

This Mouse Stradb antibody is generated from rabbits immunized with a KLH conjugated synthetic peptide between 390-418 amino acids from the C-terminal region of mouse Stradb.

Dilution

WB~~1:1000

Format

Purified polyclonal antibody supplied in PBS with 0.09% (W/V) sodium azide. This antibody is purified through a protein A column, followed by peptide affinity purification.

Storage

Maintain refrigerated at 2-8°C for up to 2 weeks. For long term storage store at -20°C in small aliquots to prevent freeze-thaw cycles.

Precautions

Mouse Stradb Antibody (C-term) is for research use only and not for use in diagnostic or therapeutic procedures.

Mouse Stradb Antibody (C-term) - Protein Information

Name Stradb

Synonyms Als2cr2, Papk, Syradb

Function Pseudokinase which, in complex with CAB39/MO25 (CAB39/MO25alpha or CAB39L/MO25beta), binds to and activates STK11/LKB1. Adopts a closed conformation typical of active protein kinases and binds STK11/LKB1 as a pseudosubstrate, promoting conformational change of STK11/LKB1 in an active conformation (By similarity).

Cellular Location

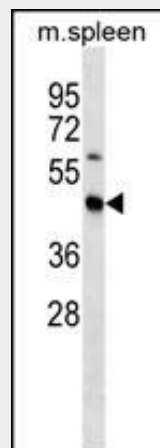
Nucleus. Cytoplasm.

Mouse Stradb Antibody (C-term) - Protocols

Provided below are standard protocols that you may find useful for product applications.

- [Western Blot](#)
- [Blocking Peptides](#)
- [Dot Blot](#)
- [Immunohistochemistry](#)
- [Immunofluorescence](#)
- [Immunoprecipitation](#)
- [Flow Cytometry](#)
- [Cell Culture](#)

Mouse Stradb Antibody (C-term) - Images



Mouse Stradb Antibody (C-term) (Cat. #AP16163b) western blot analysis in mouse spleen tissue lysates (35ug/lane). This demonstrates the Stradb antibody detected the Stradb protein (arrow).

Mouse Stradb Antibody (C-term) - Background

Pseudokinase which, in complex with CAB39, binds to and activates STK11. Relocates STK11 from the nucleus to the cytoplasm. Plays an essential role in STK11-mediated G1 cell cycle arrest.

Mouse Stradb Antibody (C-term) - References

Ling, K.H., et al. *Genome Biol.* 10 (10), R104 (2009) :
Barnes, A.P., et al. *Cell* 129(3):549-563(2007)
Nishigaki, K., et al. *J. Biol. Chem.* 278(15):13520-13530(2003)
Welch, C.L., et al. *Mamm. Genome* 8(8):620-621(1997)
Welch, C.L., et al. *J. Lipid Res.* 37(7):1406-1421(1996)