

**MAFA Antibody (C-term)**  
**Affinity Purified Rabbit Polyclonal Antibody (Pab)**  
**Catalog # AP16148b**

**Specification**

---

**MAFA Antibody (C-term) - Product Information**

Application	WB,E
Primary Accession	<a href="#">O8NHW3</a>
Other Accession	<a href="#">O8CF90</a> , <a href="#">NP_963883.2</a> , <a href="#">D3ZNT6</a>
Reactivity	Human
Predicted	Mouse, Rat
Host	Rabbit
Clonality	Polyclonal
Isotype	Rabbit IgG
Antigen Region	286-315

**MAFA Antibody (C-term) - Additional Information**

**Gene ID** 389692

**Other Names**

Transcription factor MafA, Pancreatic beta-cell-specific transcriptional activator, Transcription factor RIPE3b1, V-maf musculoaponeurotic fibrosarcoma oncogene homolog A, MAFA

**Target/Specificity**

This MAFA antibody is generated from rabbits immunized with a KLH conjugated synthetic peptide between 286-315 amino acids from the C-terminal region of human MAFA.

**Dilution**

WB~~1:1000

**Format**

Purified polyclonal antibody supplied in PBS with 0.09% (W/V) sodium azide. This antibody is purified through a protein A column, followed by peptide affinity purification.

**Storage**

Maintain refrigerated at 2-8°C for up to 2 weeks. For long term storage store at -20°C in small aliquots to prevent freeze-thaw cycles.

**Precautions**

MAFA Antibody (C-term) is for research use only and not for use in diagnostic or therapeutic procedures.

**MAFA Antibody (C-term) - Protein Information**

**Name** MAFA

**Function** Transcription factor that activates insulin gene expression (PubMed:[12011435](#),

PubMed:[15993959](#)). Acts synergistically with NEUROD1/BETA2 and PDX1 (PubMed:[15993959](#)). Binds the insulin enhancer C1/RIPE3b element (PubMed:[12011435](#)). Binds to consensus TRE-type MARE 5'-TGCTGACTCAGCA-3' DNA sequence (PubMed:[23148532](#), PubMed:[29339498](#)).

#### Cellular Location

Nucleus {ECO:0000255|PROSITE-ProRule:PRU00978, ECO:0000269|PubMed:12011435, ECO:0000269|PubMed:12917329}

#### Tissue Location

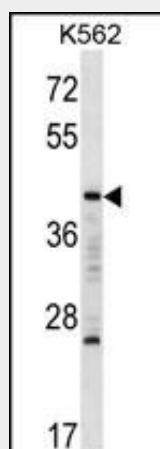
Expressed in the islets of Langerhans (at protein level).

### MAFA Antibody (C-term) - Protocols

Provided below are standard protocols that you may find useful for product applications.

- [Western Blot](#)
- [Blocking Peptides](#)
- [Dot Blot](#)
- [Immunohistochemistry](#)
- [Immunofluorescence](#)
- [Immunoprecipitation](#)
- [Flow Cytometry](#)
- [Cell Culture](#)

### MAFA Antibody (C-term) - Images



MAFA Antibody (C-term) (Cat. #AP16148b) western blot analysis in K562 cell line lysates (35ug/lane). This demonstrates the MAFA antibody detected the MAFA protein (arrow).

### MAFA Antibody (C-term) - Background

MAFA is a transcription factor that binds RIPE3b, a conserved enhancer element that regulates pancreatic beta cell-specific expression of the insulin gene (INS; MIM 176730) (Olbrot et al., 2002 [PubMed 12011435]).

### MAFA Antibody (C-term) - References

Lecoin, L., et al. Dev Neurobiol 70(7):485-497(2010)  
Guo, S., et al. J. Biol. Chem. 285(17):12655-12661(2010)

Kondo, T., et al. Mol. Endocrinol. 23(8):1281-1290(2009)

Kaneto, H., et al. Adv. Drug Deliv. Rev. 61 (7-8), 489-496 (2009) :

Garin, I., et al. Diabet. Med. 26(7):746-748(2009)