

**CACNB1 Antibody (C-term)**  
**Affinity Purified Rabbit Polyclonal Antibody (Pab)**  
**Catalog # AP16144b**

**Specification**

---

**CACNB1 Antibody (C-term) - Product Information**

Application	WB,E
Primary Accession	<a href="#">Q02641</a>
Other Accession	<a href="#">Q9MZL7</a> , <a href="#">NP_954855.1</a> , <a href="#">NP_000714.3</a>
Reactivity	Human
Predicted	Bovine
Host	Rabbit
Clonality	Polyclonal
Isotype	Rabbit IgG
Calculated MW	65714
Antigen Region	543-572

**CACNB1 Antibody (C-term) - Additional Information**

**Gene ID** 782

**Other Names**

Voltage-dependent L-type calcium channel subunit beta-1, CAB1, Calcium channel voltage-dependent subunit beta 1, CACNB1, CACNLB1

**Target/Specificity**

This CACNB1 antibody is generated from rabbits immunized with a KLH conjugated synthetic peptide between 543-572 amino acids from the C-terminal region of human CACNB1.

**Dilution**

WB~~1:1000

**Format**

Purified polyclonal antibody supplied in PBS with 0.09% (W/V) sodium azide. This antibody is purified through a protein A column, followed by peptide affinity purification.

**Storage**

Maintain refrigerated at 2-8°C for up to 2 weeks. For long term storage store at -20°C in small aliquots to prevent freeze-thaw cycles.

**Precautions**

CACNB1 Antibody (C-term) is for research use only and not for use in diagnostic or therapeutic procedures.

**CACNB1 Antibody (C-term) - Protein Information**

**Name** CACNB1

## Synonyms CACNLB1

**Function** Regulatory subunit of L-type calcium channels (PubMed:[1309651](#), PubMed:[15615847](#), PubMed:[8107964](#)). Regulates the activity of L-type calcium channels that contain CACNA1A as pore-forming subunit (By similarity). Regulates the activity of L-type calcium channels that contain CACNA1C as pore-forming subunit and increases the presence of the channel complex at the cell membrane (PubMed:[15615847](#)). Required for functional expression L-type calcium channels that contain CACNA1D as pore-forming subunit (PubMed:[1309651](#)). Regulates the activity of L-type calcium channels that contain CACNA1B as pore-forming subunit (PubMed:[8107964](#)).

## Cellular Location

Cell membrane, sarcolemma; Peripheral membrane protein {ECO:0000250|UniProtKB:P19517}; Cytoplasmic side {ECO:0000250|UniProtKB:P19517}. Cell membrane; Peripheral membrane protein

## Tissue Location

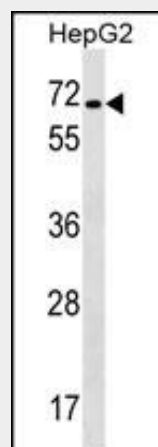
Detected in heart ventricle (at protein level) (PubMed:15615847). Isoform 1 and isoform 3 are expressed in brain, heart, spleen, central nervous system and neuroblastoma cells. Isoform 2 is expressed in skeletal muscle.

## CACNB1 Antibody (C-term) - Protocols

Provided below are standard protocols that you may find useful for product applications.

- [Western Blot](#)
- [Blocking Peptides](#)
- [Dot Blot](#)
- [Immunohistochemistry](#)
- [Immunofluorescence](#)
- [Immunoprecipitation](#)
- [Flow Cytometry](#)
- [Cell Culture](#)

## CACNB1 Antibody (C-term) - Images



CACNB1 Antibody (C-term) (Cat. #AP16144b) western blot analysis in HepG2 cell line lysates (35ug/lane). This demonstrates the CACNB1 antibody detected the CACNB1 protein (arrow).

## CACNB1 Antibody (C-term) - Background

The protein encoded by this gene belongs to the calcium channel beta subunit family. It plays an important role in the calcium channel by modulating G protein inhibition, increasing peak calcium current, controlling the alpha-1 subunit membrane targeting and shifting the voltage dependence of activation and inactivation. Alternative splicing occurs at this locus and three transcript variants encoding three distinct isoforms have been identified.

#### **CACNB1 Antibody (C-term) - References**

Jangsangthong, W., et al. Pflugers Arch. 459(3):399-411(2010)  
Olsen, J.V., et al. Cell 127(3):635-648(2006)  
Olsen, J.V., et al. Cell 127(3):635-648(2006)  
Lim, J., et al. Cell 125(4):801-814(2006)  
Foell, J.D., et al. Physiol. Genomics 17(2):183-200(2004)