

**NAPG Antibody (Center)**  
**Affinity Purified Rabbit Polyclonal Antibody (Pab)**  
**Catalog # AP16135c**

**Specification**

---

**NAPG Antibody (Center) - Product Information**

Application	WB,E
Primary Accession	<a href="#">O99747</a>
Other Accession	<a href="#">O9CWZ7</a> , <a href="#">P81127</a> , <a href="#">NP_003817.1</a>
Reactivity	Human
Predicted	Bovine, Mouse
Host	Rabbit
Clonality	Polyclonal
Isotype	Rabbit IgG
Calculated MW	34746
Antigen Region	162-190

**NAPG Antibody (Center) - Additional Information**

**Gene ID** 8774

**Other Names**

Gamma-soluble NSF attachment protein, SNAP-gamma, N-ethylmaleimide-sensitive factor attachment protein gamma, NAPG, SNAPG

**Target/Specificity**

This NAPG antibody is generated from rabbits immunized with a KLH conjugated synthetic peptide between 162-190 amino acids from the Central region of human NAPG.

**Dilution**

WB~~1:1000

**Format**

Purified polyclonal antibody supplied in PBS with 0.09% (W/V) sodium azide. This antibody is purified through a protein A column, followed by peptide affinity purification.

**Storage**

Maintain refrigerated at 2-8°C for up to 2 weeks. For long term storage store at -20°C in small aliquots to prevent freeze-thaw cycles.

**Precautions**

NAPG Antibody (Center) is for research use only and not for use in diagnostic or therapeutic procedures.

**NAPG Antibody (Center) - Protein Information**

**Name** NAPG ([HGNC:7642](#))

**Function** Required for vesicular transport between the endoplasmic reticulum and the Golgi apparatus.

**Cellular Location**

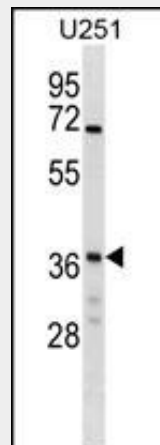
Membrane {ECO:0000250|UniProtKB:P81127}; Peripheral membrane protein {ECO:0000250|UniProtKB:P81127}. Golgi apparatus {ECO:0000250|UniProtKB:Q9CWZ7}

**NAPG Antibody (Center) - Protocols**

Provided below are standard protocols that you may find useful for product applications.

- [Western Blot](#)
- [Blocking Peptides](#)
- [Dot Blot](#)
- [Immunohistochemistry](#)
- [Immunofluorescence](#)
- [Immunoprecipitation](#)
- [Flow Cytometry](#)
- [Cell Culture](#)

**NAPG Antibody (Center) - Images**



NAPG Antibody (Center) (Cat. #AP16135c) western blot analysis in U251 cell line lysates (35ug/lane). This demonstrates the NAPG antibody detected the NAPG protein (arrow).

**NAPG Antibody (Center) - Background**

This gene encodes soluble NSF attachment protein gamma. The soluble NSF attachment proteins (SNAPs) enable N-ethyl-maleimide-sensitive fusion protein (NSF) to bind to target membranes. NSF and SNAPs appear to be general components of the intracellular membrane fusion apparatus, and their action at specific sites of fusion must be controlled by SNAP receptors particular to the membranes being fused. The product of this gene mediates platelet exocytosis and controls the membrane fusion events of this process.

**NAPG Antibody (Center) - References**

Yosifova, A., et al. J Affect Disord 117 (1-2), 87-97 (2009) :

Li, X., et al. *Neurosci. Lett.* 457(3):159-162(2009)  
Lamesch, P., et al. *Genomics* 89(3):307-315(2007)  
Weller, A.E., et al. *Psychiatr. Genet.* 16(1):3-8(2006)  
Rush, J., et al. *Nat. Biotechnol.* 23(1):94-101(2005)