

**Mouse Araf Antibody (Center)**  
**Affinity Purified Rabbit Polyclonal Antibody (Pab)**  
**Catalog # AP16104c**

## Specification

---

### Mouse Araf Antibody (Center) - Product Information

Application	WB,E
Primary Accession	<a href="#">P04627</a>
Other Accession	<a href="#">NP_001153117.1</a> , <a href="#">NP_033833.1</a>
Reactivity	Human
Host	Rabbit
Clonality	Polyclonal
Isotype	Rabbit IgG
Calculated MW	67581
Antigen Region	249-277

### Mouse Araf Antibody (Center) - Additional Information

**Gene ID** 11836

#### Other Names

Serine/threonine-protein kinase A-Raf, Proto-oncogene A-Raf, Araf, A-raf, Araf1

#### Target/Specificity

This Mouse Araf antibody is generated from rabbits immunized with a KLH conjugated synthetic peptide between 249-277 amino acids from the Central region of mouse Araf.

#### Dilution

WB~~1:1000

#### Format

Purified polyclonal antibody supplied in PBS with 0.09% (W/V) sodium azide. This antibody is purified through a protein A column, followed by peptide affinity purification.

#### Storage

Maintain refrigerated at 2-8°C for up to 2 weeks. For long term storage store at -20°C in small aliquots to prevent freeze-thaw cycles.

#### Precautions

Mouse Araf Antibody (Center) is for research use only and not for use in diagnostic or therapeutic procedures.

### Mouse Araf Antibody (Center) - Protein Information

**Name** Araf

**Synonyms** A-raf, Araf1

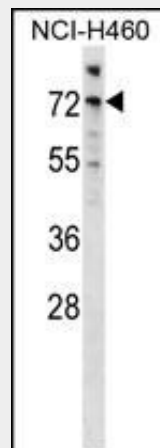
**Function** Involved in the transduction of mitogenic signals from the cell membrane to the nucleus. May also regulate the TOR signaling cascade (By similarity). Phosphorylates PFKFB2 (By similarity).

### Mouse Araf Antibody (Center) - Protocols

Provided below are standard protocols that you may find useful for product applications.

- [Western Blot](#)
- [Blocking Peptides](#)
- [Dot Blot](#)
- [Immunohistochemistry](#)
- [Immunofluorescence](#)
- [Immunoprecipitation](#)
- [Flow Cytometry](#)
- [Cell Culture](#)

### Mouse Araf Antibody (Center) - Images



Mouse Araf Antibody (Center) (Cat. #AP16104c) western blot analysis in NCI-H460 cell line lysates (35ug/lane). This demonstrates the Araf antibody detected the Araf protein (arrow).

### Mouse Araf Antibody (Center) - Background

Araf is involved in the transduction of mitogenic signals from the cell membrane to the nucleus.

### Mouse Araf Antibody (Center) - References

- Odvody, J., et al. *Oncogene* 29(22):3287-3296(2010)  
Li, Z., et al. *PLoS ONE* 5 (8), E12181 (2010) :  
Provot, S., et al. *Mol. Cell. Biol.* 28(1):344-357(2008)  
Yokoyama, T., et al. *J. Cell Biol.* 177(5):781-793(2007)  
Gerits, N., et al. *Transgenic Res.* 16(3):281-314(2007)