

GATA3 Antibody (Center)
Affinity Purified Rabbit Polyclonal Antibody (Pab)
Catalog # AP16085c

Specification

GATA3 Antibody (Center) - Product Information

Application	WB,E
Primary Accession	P23771
Other Accession	P23772 , P23825 , NP_002042.1
Reactivity	Human, Mouse
Predicted	Chicken
Host	Rabbit
Clonality	Polyclonal
Isotype	Rabbit IgG
Calculated MW	47916
Antigen Region	235-263

GATA3 Antibody (Center) - Additional Information

Gene ID 2625

Other Names

Trans-acting T-cell-specific transcription factor GATA-3, GATA-binding factor 3, GATA3

Target/Specificity

This GATA3 antibody is generated from rabbits immunized with a KLH conjugated synthetic peptide between 235-263 amino acids from the Central region of human GATA3.

Dilution

WB~~1:1000

Format

Purified polyclonal antibody supplied in PBS with 0.09% (W/V) sodium azide. This antibody is purified through a protein A column, followed by peptide affinity purification.

Storage

Maintain refrigerated at 2-8°C for up to 2 weeks. For long term storage store at -20°C in small aliquots to prevent freeze-thaw cycles.

Precautions

GATA3 Antibody (Center) is for research use only and not for use in diagnostic or therapeutic procedures.

GATA3 Antibody (Center) - Protein Information

Name GATA3

Function Transcriptional activator which binds to the enhancer of the T-cell receptor alpha and

delta genes. Binds to the consensus sequence 5'-AGATAG-3'. Required for the T-helper 2 (Th2) differentiation process following immune and inflammatory responses. Positively regulates ASB2 expression (By similarity). Coordinates macrophage transcriptional activation and UCP2-dependent metabolic reprogramming in response to IL33. Upon tissue injury, acts downstream of IL33 signaling to drive differentiation of inflammation-resolving alternatively activated macrophages.

Cellular Location

Nucleus.

Tissue Location

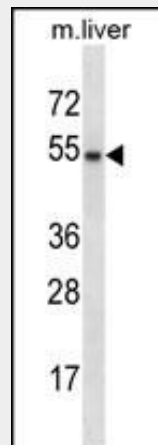
T-cells and endothelial cells.

GATA3 Antibody (Center) - Protocols

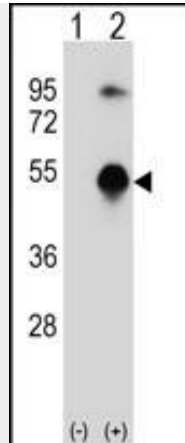
Provided below are standard protocols that you may find useful for product applications.

- [Western Blot](#)
- [Blocking Peptides](#)
- [Dot Blot](#)
- [Immunohistochemistry](#)
- [Immunofluorescence](#)
- [Immunoprecipitation](#)
- [Flow Cytometry](#)
- [Cell Culture](#)

GATA3 Antibody (Center) - Images



GATA3 Antibody (Center) (Cat. #AP16085c) western blot analysis in mouse liver tissue lysates (35ug/lane). This demonstrates the GATA3 antibody detected the GATA3 protein (arrow).



Western blot analysis of GATA3 (arrow) using rabbit polyclonal GATA3 Antibody (Center) (Cat. #AP16085c). 293 cell lysates (2 ug/lane) either nontransfected (Lane 1) or transiently transfected (Lane 2) with the GATA3 gene.

GATA3 Antibody (Center) - Background

This gene encodes a protein which belongs to the GATA family of transcription factors. The protein contains two GATA-type zinc fingers and is an important regulator of T-cell development and plays an important role in endothelial cell biology. Defects in this gene are the cause of hypoparathyroidism with sensorineural deafness and renal dysplasia.

GATA3 Antibody (Center) - References

- Cook, K.D., et al. *J. Immunol.* 185(6):3209-3216(2010)
- Schuurhof, A., et al. *Pediatr. Pulmonol.* 45(6):608-613(2010)
- Kemp, K.L., et al. *J. Immunol.* 184(8):4178-4184(2010)
- Davila, S., et al. *Genes Immun.* 11(3):232-238(2010)
- Yao, X., et al. *Chin. Med. J.* 123(6):739-744(2010)