

Mouse Cabc1 Antibody (Center)
Affinity Purified Rabbit Polyclonal Antibody (Pab)
Catalog # AP16067c

Specification

Mouse Cabc1 Antibody (Center) - Product Information

| | |
|-------------------|---|
| Application | WB,E |
| Primary Accession | Q60936 |
| Other Accession | Q5BJO0 , NP_075830.2 , NP_001156762.1 |
| Reactivity | Mouse |
| Predicted | Rat |
| Host | Rabbit |
| Clonality | Polyclonal |
| Isotype | Rabbit IgG |
| Calculated MW | 71743 |
| Antigen Region | 396-423 |

Mouse Cabc1 Antibody (Center) - Additional Information

Gene ID 67426

Other Names

Chaperone activity of bc1 complex-like, mitochondrial, Chaperone-ABC1-like, 2711-, aarF domain-containing protein kinase 3, Adck3, Cabc1

Target/Specificity

This Mouse Cabc1 antibody is generated from rabbits immunized with a KLH conjugated synthetic peptide between 396-423 amino acids from the Central region of mouse Cabc1.

Dilution

WB~~1:1000

Format

Purified polyclonal antibody supplied in PBS with 0.09% (W/V) sodium azide. This antibody is purified through a protein A column, followed by peptide affinity purification.

Storage

Maintain refrigerated at 2-8°C for up to 2 weeks. For long term storage store at -20°C in small aliquots to prevent freeze-thaw cycles.

Precautions

Mouse Cabc1 Antibody (Center) is for research use only and not for use in diagnostic or therapeutic procedures.

Mouse Cabc1 Antibody (Center) - Protein Information

Name Coq8a {ECO:0000250|UniProtKB:Q8NI60}

Function Atypical kinase involved in the biosynthesis of coenzyme Q, also named ubiquinone, an essential lipid-soluble electron transporter for aerobic cellular respiration (PubMed:[27499294](#)). Its substrate specificity is unclear: does not show any protein kinase activity (PubMed:[27499294](#)). Probably acts as a small molecule kinase, possibly a lipid kinase that phosphorylates a prenyl lipid in the ubiquinone biosynthesis pathway, as suggested by its ability to bind coenzyme Q lipid intermediates (By similarity). Shows an unusual selectivity for binding ADP over ATP (By similarity).

Cellular Location

Mitochondrion {ECO:0000250|UniProtKB:Q8NI60}. Membrane; Single-pass membrane protein {ECO:0000250|UniProtKB:Q8NI60, ECO:0000255}

Tissue Location

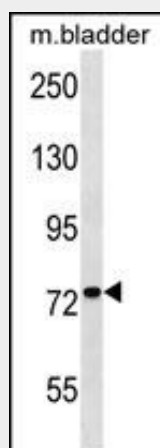
Present in various tissues (at protein level).

Mouse Cabc1 Antibody (Center) - Protocols

Provided below are standard protocols that you may find useful for product applications.

- [Western Blot](#)
- [Blocking Peptides](#)
- [Dot Blot](#)
- [Immunohistochemistry](#)
- [Immunofluorescence](#)
- [Immunoprecipitation](#)
- [Flow Cytometry](#)
- [Cell Culture](#)

Mouse Cabc1 Antibody (Center) - Images



Mouse Cabc1 Antibody (Center) (Cat. #AP16067c) western blot analysis in mouse bladder tissue lysates (35ug/lane). This demonstrates the Cabc1 antibody detected the Cabc1 protein (arrow).

Mouse Cabc1 Antibody (Center) - Background

Cabc1 may be a chaperone-like protein essential for the proper conformation and functioning of protein complexes in the respiratory chain.

Mouse Cabc1 Antibody (Center) - References

Pagliarini, D.J., et al. Cell 134(1):112-123(2008)

Garcia-Frigola, C., et al. Brain Res. Mol. Brain Res. 122(2):133-150(2004)