

**NEIL2 Antibody (N-term)**  
**Affinity Purified Rabbit Polyclonal Antibody (Pab)**  
**Catalog # AP16044a****Specification**

---

**NEIL2 Antibody (N-term) - Product Information**

Application	WB,E
Primary Accession	<a href="#">O969S2</a>
Other Accession	<a href="#">NP_001129220.1</a> , <a href="#">NP_001129218.1</a> , <a href="#">NP_659480.1</a>
Reactivity	Human
Host	Rabbit
Clonality	Polyclonal
Isotype	Rabbit IgG
Calculated MW	36826
Antigen Region	67-96

**NEIL2 Antibody (N-term) - Additional Information****Gene ID** 252969**Other Names**

Endonuclease 8-like 2, 322-, DNA glycosylase/AP lyase Neil2, DNA-(apurinic or apyrimidinic site) lyase Neil2, Endonuclease VIII-like 2, Nei homolog 2, NEH2, Nei-like protein 2, NEIL2

**Target/Specificity**

This NEIL2 antibody is generated from rabbits immunized with a KLH conjugated synthetic peptide between 67-96 amino acids from the N-terminal region of human NEIL2.

**Dilution**

WB~~1:1000

**Format**

Purified polyclonal antibody supplied in PBS with 0.09% (W/V) sodium azide. This antibody is purified through a protein A column, followed by peptide affinity purification.

**Storage**

Maintain refrigerated at 2-8°C for up to 2 weeks. For long term storage store at -20°C in small aliquots to prevent freeze-thaw cycles.

**Precautions**

NEIL2 Antibody (N-term) is for research use only and not for use in diagnostic or therapeutic procedures.

**NEIL2 Antibody (N-term) - Protein Information****Name** NEIL2

**Function** Involved in base excision repair of DNA damaged by oxidation or by mutagenic agents. Has DNA glycosylase activity towards 5- hydroxyuracil and other oxidized derivatives of cytosine with a preference for mismatched double-stranded DNA (DNA bubbles). Has low or no DNA glycosylase activity towards thymine glycol, 2-hydroxyadenine, hypoxanthine and 8-oxoguanine. Has AP (apurinic/aprimidinic) lyase activity and introduces nicks in the DNA strand. Cleaves the DNA backbone by beta-delta elimination to generate a single-strand break at the site of the removed base with both 3'- and 5'-phosphates.

#### **Cellular Location**

Nucleus.

#### **Tissue Location**

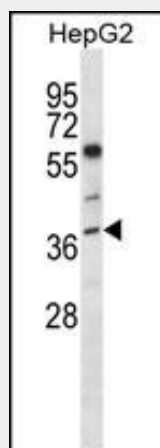
Detected in testis, skeletal muscle, heart, brain, placenta, lung, pancreas, kidney and liver

### **NEIL2 Antibody (N-term) - Protocols**

Provided below are standard protocols that you may find useful for product applications.

- [Western Blot](#)
- [Blocking Peptides](#)
- [Dot Blot](#)
- [Immunohistochemistry](#)
- [Immunofluorescence](#)
- [Immunoprecipitation](#)
- [Flow Cytometry](#)
- [Cell Culture](#)

### **NEIL2 Antibody (N-term) - Images**



NEIL2 Antibody (N-term) (Cat. #AP16044a) western blot analysis in HepG2 cell line lysates (35ug/lane). This demonstrates the NEIL2 antibody detected the NEIL2 protein (arrow).

### **NEIL2 Antibody (N-term) - Background**

NEIL2 belongs to a class of DNA glycosylases homologous to the bacterial Fpg/Nei family. These glycosylases initiate the first step in base excision repair by cleaving bases damaged by reactive oxygen species and introducing a DNA strand break via the associated lyase reaction (Bandaru et al., 2002 [PubMed 12509226])

**NEIL2 Antibody (N-term) - References**

- Briggs, F.B., et al. Am. J. Epidemiol. 172(2):217-224(2010)  
Monsees, G.M., et al. Breast Cancer Res. Treat. (2010) In press :  
Grin, I.R., et al. Biochem. Biophys. Res. Commun. 394(1):100-105(2010)  
Kinslow, C.J., et al. Genes Chromosomes Cancer 47(11):923-932(2008)  
Zhai, X., et al. Clin. Cancer Res. 14(13):4345-4352(2008)