

**RAMP3 Antibody (C-term)**  
**Affinity Purified Rabbit Polyclonal Antibody (Pab)**  
**Catalog # AP16029b**

**Specification**

---

**RAMP3 Antibody (C-term) - Product Information**

Application	WB,E
Primary Accession	<a href="#">O60896</a>
Other Accession	<a href="#">NP_005847.1</a>
Reactivity	Human, Mouse
Host	Rabbit
Clonality	Polyclonal
Isotype	Rabbit IgG
Calculated MW	16518
Antigen Region	90-118

**RAMP3 Antibody (C-term) - Additional Information**

**Gene ID** 10268

**Other Names**

Receptor activity-modifying protein 3, Calcitonin-receptor-like receptor activity-modifying protein 3, CRLR activity-modifying protein 3, RAMP3

**Target/Specificity**

This RAMP3 antibody is generated from rabbits immunized with a KLH conjugated synthetic peptide between 90-118 amino acids from the C-terminal region of human RAMP3.

**Dilution**

WB~~1:1000

**Format**

Purified polyclonal antibody supplied in PBS with 0.09% (W/V) sodium azide. This antibody is purified through a protein A column, followed by peptide affinity purification.

**Storage**

Maintain refrigerated at 2-8°C for up to 2 weeks. For long term storage store at -20°C in small aliquots to prevent freeze-thaw cycles.

**Precautions**

RAMP3 Antibody (C-term) is for research use only and not for use in diagnostic or therapeutic procedures.

**RAMP3 Antibody (C-term) - Protein Information**

**Name** RAMP3 ([HGNC:9845](#))

**Function** Accessory protein that interacts with and modulates the function of G-protein coupled

receptors including calcitonin gene-related peptide type 1 receptor (CALCRL), calcitonin receptor (CALCR) and G-protein coupled estrogen receptor 1 (GPER1) (PubMed:[23674134](#), PubMed:[9620797](#)). Required for the transport of CALCRL and GPER1 receptors to the plasma membrane (PubMed:[23674134](#), PubMed:[9620797](#)). Plays a role in cardioprotection by reducing cardiac hypertrophy and perivascular fibrosis in a GPER1-dependent manner (PubMed:[23674134](#)). Together with CALCRL, form a receptor complex for adrenomedullin/ADM and intermedin/ADM2 (PubMed:[32296767](#)). Together with CALCR, act as a receptor complex for amylin/IAPP (PubMed:[35324283](#)).

#### Cellular Location

Cell membrane; Single-pass type I membrane protein. Membrane; Single-pass type I membrane protein. Note=Moves from intracellular puncta to the plasma membrane in a RAMP3-dependent manner

#### Tissue Location

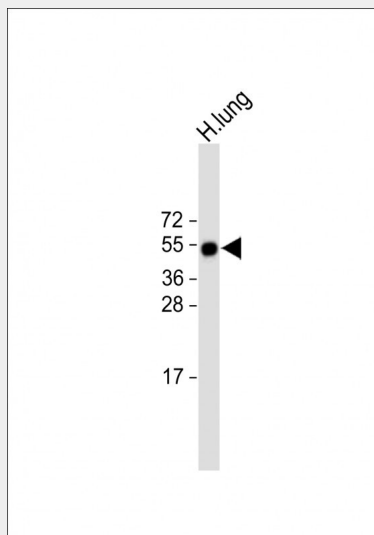
Strongly expressed in lung, breast, immune system and fetal tissues.

### RAMP3 Antibody (C-term) - Protocols

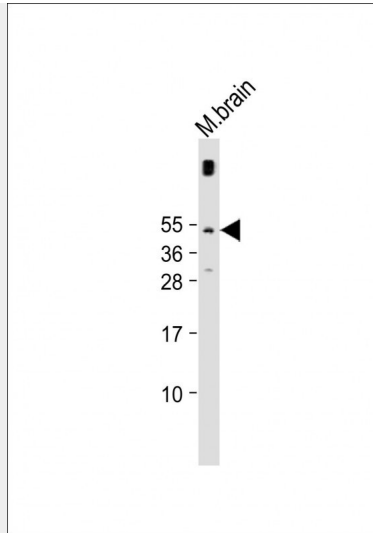
Provided below are standard protocols that you may find useful for product applications.

- [Western Blot](#)
- [Blocking Peptides](#)
- [Dot Blot](#)
- [Immunohistochemistry](#)
- [Immunofluorescence](#)
- [Immunoprecipitation](#)
- [Flow Cytometry](#)
- [Cell Culture](#)

### RAMP3 Antibody (C-term) - Images



Anti-RAMP3 Antibody (C-term) at 1:2000 dilution + human lung lysate Lysates/proteins at 20 µg per lane. Secondary Goat Anti-Rabbit IgG, (H+L), Peroxidase conjugated at 1/10000 dilution. Predicted band size : 17 kDa Blocking/Dilution buffer: 5% NFDN/TBST.



Anti-RAMP3 Antibody (C-term) at 1:1000 dilution + mouse brain lysate Lysates/proteins at 20  $\mu$ g per lane. Secondary Goat Anti-Rabbit IgG, (H+L), Peroxidase conjugated at 1/10000 dilution. Predicted band size : 17 kDa Blocking/Dilution buffer: 5% NFD/MTBST.

### **RAMP3 Antibody (C-term) - Background**

The protein encoded by this gene is a member of the RAMP family of single-transmembrane-domain proteins, called receptor (calcitonin) activity modifying proteins (RAMPs). RAMPs are type I transmembrane proteins with an extracellular N terminus and a cytoplasmic C terminus. RAMPs are required to transport calcitonin-receptor-like receptor (CRLR) to the plasma membrane. CRLR, a receptor with seven transmembrane domains, can function as either a calcitonin-gene-related peptide (CGRP) receptor or an adrenomedullin receptor, depending on which members of the RAMP family are expressed. In the presence of this (RAMP3) protein, CRLR functions as an adrenomedullin receptor.

### **RAMP3 Antibody (C-term) - References**

- Bailey, S.D., et al. *Diabetes Care* 33(10):2250-2253(2010)  
Bailey, R.J., et al. *Peptides* 31(4):579-584(2010)  
Harikumar, K.G., et al. *Biochemistry* 48(49):11773-11785(2009)  
Talmud, P.J., et al. *Am. J. Hum. Genet.* 85(5):628-642(2009)  
Kuwasako, K., et al. *Biochem. Biophys. Res. Commun.* 377(1):109-113(2008)

### **RAMP3 Antibody (C-term) - Citations**

- [Adrenomedullin Inhibits Osmotic Water Permeability in Rat Inner Medullary Collecting Ducts](#)