

SPINT1 Antibody (Center)
Affinity Purified Rabbit Polyclonal Antibody (Pab)
Catalog # AP16020c

Specification

SPINT1 Antibody (Center) - Product Information

Application	WB,E
Primary Accession	O43278
Other Accession	NP_857593.1 , NP_001027539.1
Reactivity	Human
Host	Rabbit
Clonality	Polyclonal
Isotype	Rabbit IgG
Calculated MW	58398
Antigen Region	178-207

SPINT1 Antibody (Center) - Additional Information

Gene ID 6692

Other Names

Kunitz-type protease inhibitor 1, Hepatocyte growth factor activator inhibitor type 1, HAI-1, SPINT1, HAI1

Target/Specificity

This SPINT1 antibody is generated from rabbits immunized with a KLH conjugated synthetic peptide between 178-207 amino acids from the Central region of human SPINT1.

Dilution

WB~~1:1000

Format

Purified polyclonal antibody supplied in PBS with 0.09% (W/V) sodium azide. This antibody is purified through a protein A column, followed by peptide affinity purification.

Storage

Maintain refrigerated at 2-8°C for up to 2 weeks. For long term storage store at -20°C in small aliquots to prevent freeze-thaw cycles.

Precautions

SPINT1 Antibody (Center) is for research use only and not for use in diagnostic or therapeutic procedures.

SPINT1 Antibody (Center) - Protein Information

Name SPINT1

Synonyms HAI1

Function Inhibitor of HGFAC (PubMed:[9045658](#)). Inhibits serine protease activity of ST14/matriptase in vitro (PubMed:[28710277](#)). Inhibits serine protease activity of Tmprss13, via the BPTI/Kunitz inhibitor 1 domain (PubMed:[20977675](#)).

Cellular Location

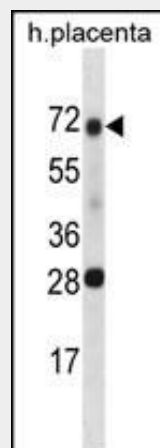
Secreted. Cytoplasm. Cell membrane

SPINT1 Antibody (Center) - Protocols

Provided below are standard protocols that you may find useful for product applications.

- [Western Blot](#)
- [Blocking Peptides](#)
- [Dot Blot](#)
- [Immunohistochemistry](#)
- [Immunofluorescence](#)
- [Immunoprecipitation](#)
- [Flow Cytometry](#)
- [Cell Culture](#)

SPINT1 Antibody (Center) - Images



SPINT1 Antibody (Center) (Cat. #AP16020c) western blot analysis in human placenta tissue lysates (35ug/lane). This demonstrates the SPINT1 antibody detected the SPINT1 protein (arrow).

SPINT1 Antibody (Center) - Background

The protein encoded by this gene is a member of the Kunitz family of serine protease inhibitors. The protein is a potent inhibitor specific for HGF activator and is thought to be involved in the regulation of the proteolytic activation of HGF in injured tissues. Alternative splicing results in multiple variants encoding different isoforms.

SPINT1 Antibody (Center) - References

Chen, Y.W., et al. J. Biol. Chem. 285(41):31755-31762(2010)
Kauppinen, J.M., et al. Cancer Epidemiol. Biomarkers Prev. 19(9):2133-2142(2010)
Nakamura, K., et al. Int. J. Oncol. 35(2):239-248(2009)
Wang, J.K., et al. Am. J. Physiol., Cell Physiol. 297 (2), C459-C470 (2009) :

Cheng, H., et al. Cancer Res. 69(5):1828-1835(2009)