

FOLR2 Antibody (N-term)
Affinity Purified Rabbit Polyclonal Antibody (Pab)
Catalog # AP16014a

Specification

FOLR2 Antibody (N-term) - Product Information

Application	WB,E
Primary Accession	P14207
Other Accession	Q05685 , NP_001107008.1 , NP_000794.3 , NP_001107007.1
Reactivity	Human
Predicted	Mouse
Host	Rabbit
Clonality	Polyclonal
Isotype	Rabbit IgG
Calculated MW	29280
Antigen Region	17-44

FOLR2 Antibody (N-term) - Additional Information

Gene ID 2350

Other Names

Folate receptor beta, FR-beta, Folate receptor 2, Folate receptor, fetal/placental, Placental folate-binding protein, FBP, FOLR2

Target/Specificity

This FOLR2 antibody is generated from rabbits immunized with a KLH conjugated synthetic peptide between 17-44 amino acids from the N-terminal region of human FOLR2.

Dilution

WB~~1:1000

Format

Purified polyclonal antibody supplied in PBS with 0.09% (W/V) sodium azide. This antibody is purified through a protein A column, followed by peptide affinity purification.

Storage

Maintain refrigerated at 2-8°C for up to 2 weeks. For long term storage store at -20°C in small aliquots to prevent freeze-thaw cycles.

Precautions

FOLR2 Antibody (N-term) is for research use only and not for use in diagnostic or therapeutic procedures.

FOLR2 Antibody (N-term) - Protein Information

Name FOLR2

Function Binds to folate and reduced folic acid derivatives and mediates delivery of 5-methyltetrahydrofolate and folate analogs into the interior of cells. Has high affinity for folate and folic acid analogs at neutral pH. Exposure to slightly acidic pH after receptor endocytosis triggers a conformation change that strongly reduces its affinity for folates and mediates their release.

Cellular Location

Cell membrane; Lipid-anchor, GPI-anchor. Secreted

Tissue Location

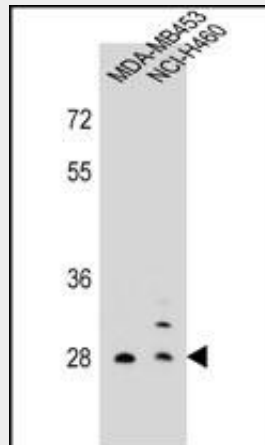
Expressed in placenta and hematopoietic cells. Expression is increased in malignant tissues

FOLR2 Antibody (N-term) - Protocols

Provided below are standard protocols that you may find useful for product applications.

- [Western Blot](#)
- [Blocking Peptides](#)
- [Dot Blot](#)
- [Immunohistochemistry](#)
- [Immunofluorescence](#)
- [Immunoprecipitation](#)
- [Flow Cytometry](#)
- [Cell Culture](#)

FOLR2 Antibody (N-term) - Images



FOLR2 Antibody (N-term) (Cat. #AP16014a) western blot analysis in MDA-MB453, NCI-H460 cell line lysates (35ug/lane). This demonstrates the FOLR2 antibody detected the FOLR2 protein (arrow).

FOLR2 Antibody (N-term) - Background

The protein encoded by this gene is a member of the folate receptor (FOLR) family, and these genes exist in a cluster on chromosome 11. Members of this gene family have a high affinity for folic acid and for several reduced folic acid derivatives, and they mediate delivery of 5-methyltetrahydrofolate to the interior of cells. This protein has a 68% and 79% sequence homology with the FOLR1 and FOLR3 proteins, respectively. Although this protein was

originally thought to be specific to placenta, it can also exist in other tissues, and it may play a role in the transport of methotrexate in synovial macrophages in rheumatoid arthritis patients. Multiple transcript variants that encode the same protein have been found for this gene.

FOLR2 Antibody (N-term) - References

- Bailey, S.D., et al. Diabetes Care 33(10):2250-2253(2010)
O'Byrne, M.R., et al. Birth Defects Res. Part A Clin. Mol. Teratol. 88(8):689-694(2010)
Jugessur, A., et al. PLoS ONE 5 (7), E11493 (2010) :
Yokoyama, K., et al. Nephron Clin Pract 115 (4), C237-C243 (2010) :
Puig-Kroger, A., et al. Cancer Res. 69(24):9395-9403(2009)