

P2RX2 Antibody (N-term)
Affinity Purified Rabbit Polyclonal Antibody (Pab)
Catalog # AP16011a

Specification

P2RX2 Antibody (N-term) - Product Information

Application	WB,E
Primary Accession	O9UBL9
Other Accession	NP_057402.1 , NP_777362.1 , NP_733783.1
Reactivity	Human
Host	Rabbit
Clonality	Polyclonal
Isotype	Rabbit IgG
Calculated MW	51754
Antigen Region	81-109

P2RX2 Antibody (N-term) - Additional Information

Gene ID 22953

Other Names

P2X purinoceptor 2, P2X2, ATP receptor, Purinergic receptor, P2RX2, P2X2

Target/Specificity

This P2RX2 antibody is generated from rabbits immunized with a KLH conjugated synthetic peptide between 81-109 amino acids from the N-terminal region of human P2RX2.

Dilution

WB~~1:1000

Format

Purified polyclonal antibody supplied in PBS with 0.09% (W/V) sodium azide. This antibody is purified through a protein A column, followed by peptide affinity purification.

Storage

Maintain refrigerated at 2-8°C for up to 2 weeks. For long term storage store at -20°C in small aliquots to prevent freeze-thaw cycles.

Precautions

P2RX2 Antibody (N-term) is for research use only and not for use in diagnostic or therapeutic procedures.

P2RX2 Antibody (N-term) - Protein Information

Name P2RX2 ([HGNC:15459](#))

Synonyms P2X2

Function ATP-gated nonselective transmembrane cation channel permeable to potassium, sodium and calcium (PubMed:[10570044](#), PubMed:[31636190](#)). Activation by extracellular ATP induces a variety of cellular responses, such as excitatory postsynaptic responses in sensory neurons, neuromuscular junctions (NMJ) formation, hearing, perception of taste and peristalsis (By similarity). In the inner ear, regulates sound transduction and auditory neurotransmission, outer hair cell electromotility, inner ear gap junctions, and K(+) recycling (PubMed:[23345450](#)). Mediates synaptic transmission between neurons and from neurons to smooth muscle (By similarity).

Cellular Location

Cell membrane; Multi-pass membrane protein {ECO:0000250|UniProtKB:P56373}. Note=Localizes to the apical membranes of hair cells in the organ of Corti.

Tissue Location

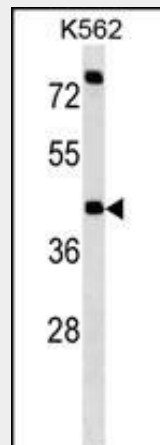
Expressed in both the central and peripheral nervous system, as well as in the pituitary gland

P2RX2 Antibody (N-term) - Protocols

Provided below are standard protocols that you may find useful for product applications.

- [Western Blot](#)
- [Blocking Peptides](#)
- [Dot Blot](#)
- [Immunohistochemistry](#)
- [Immunofluorescence](#)
- [Immunoprecipitation](#)
- [Flow Cytometry](#)
- [Cell Culture](#)

P2RX2 Antibody (N-term) - Images



P2RX2 Antibody (N-term) (Cat. #AP16011a) western blot analysis in K562 cell line lysates (35ug/lane). This demonstrates the P2RX2 antibody detected the P2RX2 protein (arrow).

P2RX2 Antibody (N-term) - Background

The product of this gene belongs to the family of purinoceptors for ATP. This receptor functions as a ligand-gated ion channel. Binding to ATP mediates synaptic transmission between neurons and from neurons to smooth muscle. Six transcript variants encoding six distinct isoforms have been identified for this gene.

P2RX2 Antibody (N-term) - References

- Allsopp, R.C., et al. J. Biol. Chem. 285(43):32770-32777(2010)
Decker, D.A., et al. Neurogastroenterol. Motil. 22(8):901-908(2010)
Coddou, C., et al. J. Neurosci. 29(39):12284-12291(2009)
Pannek, J., et al. Spinal Cord 47(7):561-564(2009)
Chaumont, S., et al. Sci Signal 1 (41), RA8 (2008) :