

**KRAS2 Antibody (C-term)**  
**Purified Rabbit Polyclonal Antibody (Pab)**  
**Catalog # AP16005b****Specification**

---

**KRAS2 Antibody (C-term) - Product Information**

Application	WB,E
Primary Accession	<a href="#">P01116</a>
Other Accession	<a href="#">P08644</a> , <a href="#">P32883</a> , <a href="#">NP_203524.1</a> , <a href="#">NP_004976.2</a>
Reactivity	Human, Mouse
Predicted	Rat
Host	Rabbit
Clonality	Polyclonal
Isotype	Rabbit IgG
Antigen Region	158-185

**KRAS2 Antibody (C-term) - Additional Information****Gene ID** 3845**Other Names**

GTPase KRas, K-Ras 2, Ki-Ras, c-K-ras, c-Ki-ras, GTPase KRas, N-terminally processed, KRAS, KRAS2, RASK2

**Target/Specificity**

This KRAS2 antibody is generated from rabbits immunized with a KLH conjugated synthetic peptide between 158-185 amino acids from the C-terminal region of human KRAS2.

**Dilution**

WB~~1:1000

**Format**

Purified polyclonal antibody supplied in PBS with 0.09% (W/V) sodium azide. This antibody is prepared by Saturated Ammonium Sulfate (SAS) precipitation followed by dialysis against PBS.

**Storage**

Maintain refrigerated at 2-8°C for up to 2 weeks. For long term storage store at -20°C in small aliquots to prevent freeze-thaw cycles.

**Precautions**

KRAS2 Antibody (C-term) is for research use only and not for use in diagnostic or therapeutic procedures.

**KRAS2 Antibody (C-term) - Protein Information****Name** KRAS**Synonyms** KRAS2, RASK2

**Function** Ras proteins bind GDP/GTP and possess intrinsic GTPase activity (PubMed:[20949621](#)). Plays an important role in the regulation of cell proliferation (PubMed:[22711838](#), PubMed:[23698361](#)). Plays a role in promoting oncogenic events by inducing transcriptional silencing of tumor suppressor genes (TSGs) in colorectal cancer (CRC) cells in a ZNF304-dependent manner (PubMed:[24623306](#)).

#### Cellular Location

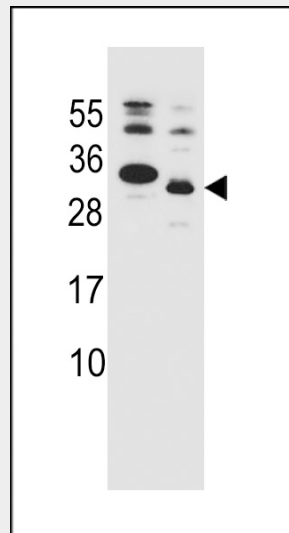
Cell membrane; Lipid-anchor; Cytoplasmic side. Endomembrane system. Cytoplasm, cytosol

#### KRAS2 Antibody (C-term) - Protocols

Provided below are standard protocols that you may find useful for product applications.

- [Western Blot](#)
- [Blocking Peptides](#)
- [Dot Blot](#)
- [Immunohistochemistry](#)
- [Immunofluorescence](#)
- [Immunoprecipitation](#)
- [Flow Cytometry](#)
- [Cell Culture](#)

#### KRAS2 Antibody (C-term) - Images



KRAS2 Antibody (C-term) (Cat. #AP16005b) western blot analysis in WiDr cell line and mouse lung tissue lysates (35ug/lane). This demonstrates the KRAS2 antibody detected the KRAS2 protein (arrow).

#### KRAS2 Antibody (C-term) - Background

This gene, a Kirsten ras oncogene homolog from the mammalian ras gene family, encodes a protein that is a member of the small GTPase superfamily. A single amino acid substitution is responsible for an activating mutation. The transforming protein that results is implicated in various malignancies, including lung adenocarcinoma, mucinous adenoma, ductal carcinoma of the pancreas and colorectal carcinoma. Alternative splicing leads to variants

encoding two isoforms that differ in the C-terminal region.

#### **KRAS2 Antibody (C-term) - References**

Bruckman, K.C., et al. Oral Surg Oral Med Oral Pathol Oral Radiol Endod 110(5):632-637(2010)  
Wong, K.K., et al. Am. J. Pathol. 177(4):1611-1617(2010)  
Irahara, N., et al. Diagn. Mol. Pathol. 19(3):157-163(2010)  
Carotenuto, P., et al. Pharmacogenomics 11(8):1169-1179(2010)  
Leventopoulos, G., et al. Clin. Exp. Rheumatol. 28(4):556-557(2010)