

STAT5b Antibody (C-term)
Purified Rabbit Polyclonal Antibody (Pab)
Catalog # AP1530a**Specification**

STAT5b Antibody (C-term) - Product Information

Application	WB, IHC-P,E
Primary Accession	P51692
Other Accession	P52632 , Q9TUZ0 , P42232 , Q9TUM3
Reactivity	Human, Mouse, Rat
Predicted	Bovine, Pig
Host	Rabbit
Clonality	Polyclonal
Isotype	Rabbit IgG
Calculated MW	89866
Antigen Region	760-787

STAT5b Antibody (C-term) - Additional Information**Gene ID** 6777**Other Names**

Signal transducer and activator of transcription 5B, STAT5B

Target/Specificity

This STAT5b antibody is generated from rabbits immunized with a KLH conjugated synthetic peptide between 760-787 amino acids from the C-terminal region of human STAT5b.

DilutionWB~~1:1000
IHC-P~~1:50~100**Format**

Purified polyclonal antibody supplied in PBS with 0.09% (W/V) sodium azide. This antibody is purified through a protein G column, eluted with high and low pH buffers and neutralized immediately, followed by dialysis against PBS.

Storage

Maintain refrigerated at 2-8°C for up to 2 weeks. For long term storage store at -20°C in small aliquots to prevent freeze-thaw cycles.

Precautions

STAT5b Antibody (C-term) is for research use only and not for use in diagnostic or therapeutic procedures.

STAT5b Antibody (C-term) - Protein Information**Name** STAT5B

Function Carries out a dual function: signal transduction and activation of transcription (PubMed:[29844444](#)). Mediates cellular responses to the cytokine KITLG/SCF and other growth factors. Binds to the GAS element and activates PRL-induced transcription. Positively regulates hematopoietic/erythroid differentiation.

Cellular Location

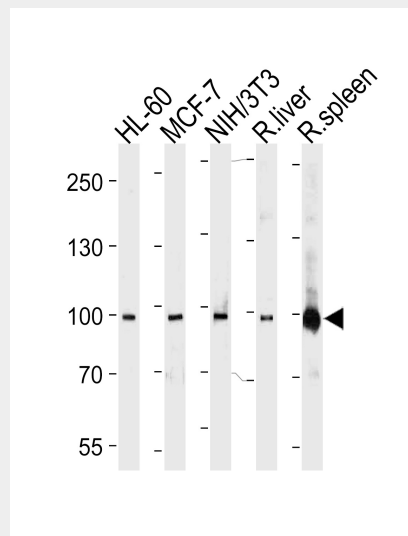
Cytoplasm. Nucleus. Note=Translocated into the nucleus in response to phosphorylation.

STAT5b Antibody (C-term) - Protocols

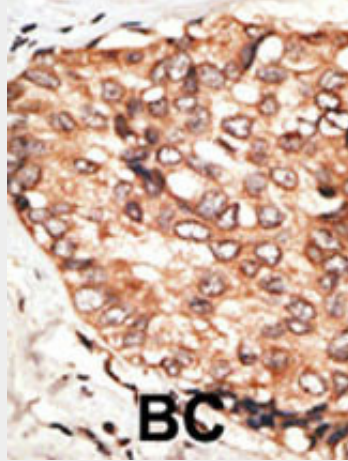
Provided below are standard protocols that you may find useful for product applications.

- [Western Blot](#)
- [Blocking Peptides](#)
- [Dot Blot](#)
- [Immunohistochemistry](#)
- [Immunofluorescence](#)
- [Immunoprecipitation](#)
- [Flow Cytometry](#)
- [Cell Culture](#)

STAT5b Antibody (C-term) - Images



STAT5b Antibody (Cat. #AP1530a) western blot analysis in HL-60,MCF-7,mouse NIH/3T3 cell line, rat liver and spleen lysates (35ug/lane).This demonstrates the STAT5b antibody detected the STAT5b protein (arrow).



Formalin-fixed and paraffin-embedded human cancer tissue reacted with the primary antibody, which was peroxidase-conjugated to the secondary antibody, followed by DAB staining. This data demonstrates the use of this antibody for immunohistochemistry; clinical relevance has not been evaluated. BC = breast carcinoma; HC = hepatocarcinoma.

STAT5b Antibody (C-term) - Background

STAT5b is a member of the STAT family of transcription factors. In response to cytokines and growth factors, STAT family members are phosphorylated by the receptor associated kinases, and then form homo- or heterodimers that translocate to the cell nucleus where they act as transcription activators. This protein mediates the signal transduction triggered by various cell ligands, such as IL2, IL4, CSF1, and different growth hormones. It has been shown to be involved in diverse biological processes, such as TCR signaling, apoptosis, adult mammary gland development, and sexual dimorphism of liver gene expression. This gene was found to fuse to retinoic acid receptor-alpha (RARA) gene in a small subset of acute promyelocytic leukemias (APLL). The dysregulation of the signaling pathways mediated by this protein may be the cause of the APLL.

STAT5b Antibody (C-term) - References

- Xi, S., et al., *Cancer Res.* 63(20):6763-6771 (2003).
- Uddin, S., et al., *Biochem. Biophys. Res. Commun.* 308(2):325-330 (2003).
- Zhang, X., et al., *J. Allergy Clin. Immunol.* 112(1):93-101 (2003).
- Yamashita, H., et al., *Oncogene* 22(11):1638-1652 (2003).
- Kloth, M.T., et al., *J. Biol. Chem.* 278(3):1671-1679 (2003).