

**Mouse TLR3 Antibody (N-term)**  
**Purified Rabbit Polyclonal Antibody (Pab)**  
**Catalog # AP1503c****Specification**

---

**Mouse TLR3 Antibody (N-term) - Product Information**

Application	IHC-P,E
Primary Accession	<a href="#">Q99MB1</a>
Reactivity	Mouse
Host	Rabbit
Clonality	Polyclonal
Isotype	Rabbit IgG
Antigen Region	31-60

**Mouse TLR3 Antibody (N-term) - Additional Information****Gene ID** 142980**Other Names**

Toll-like receptor 3, CD283, Tlr3

**Target/Specificity**

This Mouse TLR3 antibody is generated from rabbits immunized with a KLH conjugated synthetic peptide between 31~60 amino acids from the N-terminal region of mouse TLR3.

**Dilution**

IHC-P~~1:50~100

**Format**

Purified polyclonal antibody supplied in PBS with 0.09% (W/V) sodium azide. This antibody is prepared by Saturated Ammonium Sulfate (SAS) precipitation followed by dialysis against PBS.

**Storage**

Maintain refrigerated at 2-8°C for up to 2 weeks. For long term storage store at -20°C in small aliquots to prevent freeze-thaw cycles.

**Precautions**

Mouse TLR3 Antibody (N-term) is for research use only and not for use in diagnostic or therapeutic procedures.

**Mouse TLR3 Antibody (N-term) - Protein Information****Name** Tlr3 {ECO:0000312|MGI:MGI:2156367}

**Function** Key component of innate and adaptive immunity. TLRs (Toll- like receptors) control host immune response against pathogens through recognition of molecular patterns specific to microorganisms. TLR3 is a nucleotide-sensing TLR which is activated by double-stranded RNA, a sign of viral infection. Acts via the adapter TRIF/TICAM1, leading to NF-kappa-B activation, IRF3

nuclear translocation, cytokine secretion and the inflammatory response (By similarity).

#### Cellular Location

Endoplasmic reticulum membrane; Single-pass type I membrane protein. Endosome membrane {ECO:0000250|UniProtKB:O15455} Early endosome {ECO:0000250|UniProtKB:O15455}

#### Tissue Location

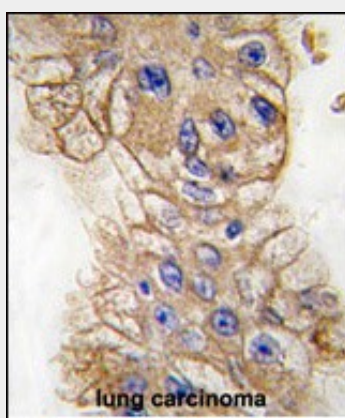
Highly expressed in lung. After intraperitoneal injection of lipopolysaccharide, highly expressed in brain, heart, kidney, liver, lung and spleen

### Mouse TLR3 Antibody (N-term) - Protocols

Provided below are standard protocols that you may find useful for product applications.

- [Western Blot](#)
- [Blocking Peptides](#)
- [Dot Blot](#)
- [Immunohistochemistry](#)
- [Immunofluorescence](#)
- [Immunoprecipitation](#)
- [Flow Cytometry](#)
- [Cell Culture](#)

### Mouse TLR3 Antibody (N-term) - Images



Formalin-fixed and paraffin-embedded human lung carcinoma tissue reacted with Mouse TLR3 antibody (N-term) (Cat.#AP1503c), which was peroxidase-conjugated to the secondary antibody, followed by DAB staining. This data demonstrates the use of this antibody for immunohistochemistry; clinical relevance has not been evaluated.

### Mouse TLR3 Antibody (N-term) - Background

The protein encoded by this gene is a member of the Toll-like receptor (TLR) family which plays a fundamental role in pathogen recognition and activation of innate immunity. TLRs are highly conserved from Drosophila to humans and share structural and functional similarities. They recognize pathogen-associated molecular patterns (PAMPs) that are expressed on infectious agents, and mediate the production of cytokines necessary for the development of effective immunity. The various TLRs exhibit different patterns of expression. This receptor is most abundantly expressed in placenta and pancreas, and is restricted to the dendritic subpopulation of the leukocytes. It recognizes dsRNA associated with viral infection, and induces the activation of NF-kappaB and the production of type I interferons. It may thus play a role in host defense against viruses. Use of

alternative polyadenylation sites to generate different length transcripts has been noted for this gene.

#### **Mouse TLR3 Antibody (N-term) - References**

Alexopoulou, L., et al., Nature 413(6857):732-738 (2001).