

**CDH3 Antibody (C-term)**  
**Affinity Purified Rabbit Polyclonal Antibody (Pab)**  
**Catalog # AP1499B**

**Specification**

---

**CDH3 Antibody (C-term) - Product Information**

Application	<b>WB, IHC-P,E</b>
Primary Accession	<a href="#">P22223</a>
Reactivity	<b>Human</b>
Host	<b>Rabbit</b>
Clonality	<b>Polyclonal</b>
Isotype	<b>Rabbit IgG</b>
Antigen Region	<b>660-688</b>

**CDH3 Antibody (C-term) - Additional Information**

**Gene ID** 1001

**Other Names**

Cadherin-3, Placental cadherin, P-cadherin, CDH3, CDHP

**Target/Specificity**

This CDH3 antibody is generated from rabbits immunized with a KLH conjugated synthetic peptide between 660-688 amino acids from the C-terminal region of human CDH3.

**Dilution**

WB~~1:1000  
IHC-P~~1:10~50

**Format**

Purified polyclonal antibody supplied in PBS with 0.09% (W/V) sodium azide. This antibody is purified through a protein A column, followed by peptide affinity purification.

**Storage**

Maintain refrigerated at 2-8°C for up to 2 weeks. For long term storage store at -20°C in small aliquots to prevent freeze-thaw cycles.

**Precautions**

CDH3 Antibody (C-term) is for research use only and not for use in diagnostic or therapeutic procedures.

**CDH3 Antibody (C-term) - Protein Information**

**Name** CDH3

**Synonyms** CDHP

**Function** Cadherins are calcium-dependent cell adhesion proteins. They preferentially interact

with themselves in a homophilic manner in connecting cells; cadherins may thus contribute to the sorting of heterogeneous cell types.

#### Cellular Location

Cell membrane; Single-pass type I membrane protein

#### Tissue Location

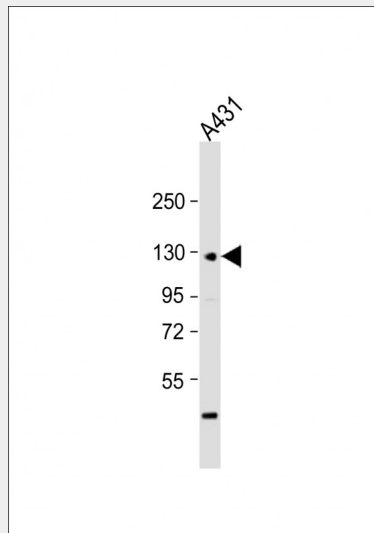
Expressed in some normal epithelial tissues and in some carcinoma cell lines.

### CDH3 Antibody (C-term) - Protocols

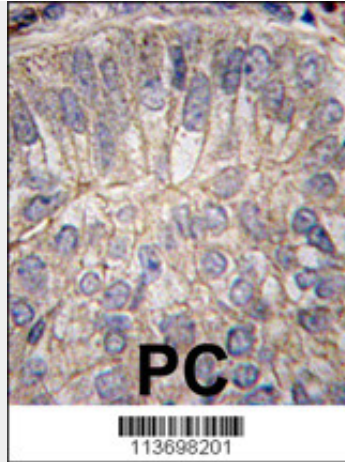
Provided below are standard protocols that you may find useful for product applications.

- [Western Blot](#)
- [Blocking Peptides](#)
- [Dot Blot](#)
- [Immunohistochemistry](#)
- [Immunofluorescence](#)
- [Immunoprecipitation](#)
- [Flow Cytometry](#)
- [Cell Culture](#)

### CDH3 Antibody (C-term) - Images



Anti-CDH3 Antibody (C-term) at 1:1000 dilution + A431 whole cell lysate Lysates/proteins at 20  $\mu$ g per lane. Secondary Goat Anti-Rabbit IgG, (H+L), Peroxidase conjugated at 1/10000 dilution. Predicted band size : 91 kDa Blocking/Dilution buffer: 5% NFDN/TBST.



Formalin-fixed and paraffin-embedded human prostate carcinoma tissue reacted with CDH3 antibody (C-term) (Cat.#AP1499b), which was peroxidase-conjugated to the secondary antibody, followed by DAB staining. This data demonstrates the use of this antibody for immunohistochemistry; clinical relevance has not been evaluated.

#### **CDH3 Antibody (C-term) - Background**

CDH3 is a classical cadherin from the cadherin superfamily. It is a calcium-dependent cell-cell adhesion glycoprotein comprised of five extracellular cadherin repeats, a transmembrane region and a highly conserved cytoplasmic tail. Aberrant expression of this protein is observed in cervical adenocarcinomas. Mutations in the gene encoding CDH3 have been associated with congenital hypotrichosis with juvenile macular dystrophy.

#### **CDH3 Antibody (C-term) - References**

Indelman,M., Clin. Exp. Dermatol. 32 (2), 191-196 (2007)  
Paredes,J., Clin. Cancer Res. 11 (16), 5869-5877 (2005)

#### **CDH3 Antibody (C-term) - Citations**

- [Progression Risk Score Estimation Based on Immunostaining Data in Oral Cancer Using Unsupervised Hierarchical Clustering Analysis: A Retrospective Study in Taiwan](#)