

CREG1 Antibody (N-term)
Affinity Purified Rabbit Polyclonal Antibody (Pab)
Catalog # AP14997a

Specification

CREG1 Antibody (N-term) - Product Information

Application	WB,E
Primary Accession	O75629
Other Accession	NP_003842.1
Reactivity	Human, Mouse
Host	Rabbit
Clonality	Polyclonal
Isotype	Rabbit IgG
Calculated MW	24075
Antigen Region	17-45

CREG1 Antibody (N-term) - Additional Information

Gene ID 8804

Other Names

Protein CREG1, Cellular repressor of E1A-stimulated genes 1, CREG1, CREG

Target/Specificity

This CREG1 antibody is generated from rabbits immunized with a KLH conjugated synthetic peptide between 17-45 amino acids from the N-terminal region of human CREG1.

Dilution

WB~~1:1000

Format

Purified polyclonal antibody supplied in PBS with 0.09% (W/V) sodium azide. This antibody is purified through a protein A column, followed by peptide affinity purification.

Storage

Maintain refrigerated at 2-8°C for up to 2 weeks. For long term storage store at -20°C in small aliquots to prevent freeze-thaw cycles.

Precautions

CREG1 Antibody (N-term) is for research use only and not for use in diagnostic or therapeutic procedures.

CREG1 Antibody (N-term) - Protein Information

Name CREG1

Synonyms CREG

Function May contribute to the transcriptional control of cell growth and differentiation. Antagonizes transcriptional activation and cellular transformation by the adenovirus E1A protein. The transcriptional control activity of cell growth requires interaction with IGF2R.

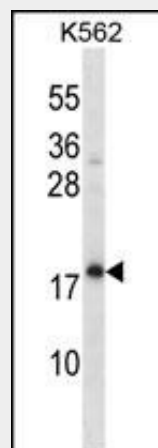
Cellular Location
Secreted.

CREG1 Antibody (N-term) - Protocols

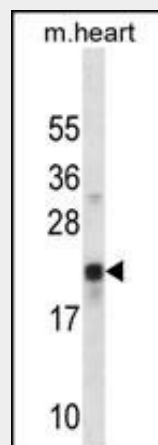
Provided below are standard protocols that you may find useful for product applications.

- [Western Blot](#)
- [Blocking Peptides](#)
- [Dot Blot](#)
- [Immunohistochemistry](#)
- [Immunofluorescence](#)
- [Immunoprecipitation](#)
- [Flow Cytometry](#)
- [Cell Culture](#)

CREG1 Antibody (N-term) - Images



CREG1 Antibody (N-term) (Cat. #AP14997a) western blot analysis in K562 cell line lysates (35ug/lane). This demonstrates the CREG1 antibody detected the CREG1 protein (arrow).



CREG1 Antibody (N-term) (Cat. #AP14997a) western blot analysis in mouse heart tissue lysates (35ug/lane). This demonstrates the CREG1 antibody detected the CREG1 protein (arrow).

CREG1 Antibody (N-term) - Background

The adenovirus E1A protein both activates and represses gene expression to promote cellular proliferation and inhibit differentiation. The protein encoded by this gene antagonizes transcriptional activation and cellular transformation by E1A. This protein shares limited sequence similarity with E1A and binds both the general transcription factor TBP and the tumor suppressor pRb in vitro. This gene may contribute to the transcriptional control of cell growth and differentiation.

CREG1 Antibody (N-term) - References

Han, Y., et al. J. Mol. Cell. Cardiol. 48(6):1225-1235(2010)
Ehret, G.B., et al. Eur. J. Hum. Genet. 17(12):1650-1657(2009)
Han, Y., et al. Exp. Cell Res. 315(19):3301-3311(2009)
Bian, Z., et al. J. Cell. Mol. Med. 13(7):1302-1313(2009)
Cheung, C.L., et al. Hum. Mol. Genet. 18(4):679-687(2009)