

KLF2 Antibody (N-term)
Affinity Purified Rabbit Polyclonal Antibody (Pab)
Catalog # AP14973a

Specification

KLF2 Antibody (N-term) - Product Information

Application	WB,E
Primary Accession	O9Y5W3
Other Accession	NP_057354.1
Reactivity	Human, Mouse
Host	Rabbit
Clonality	Polyclonal
Isotype	Rabbit IgG
Antigen Region	13-42

KLF2 Antibody (N-term) - Additional Information

Gene ID 10365

Other Names

Krueppel-like factor 2, Lung krueppel-like factor, KLF2, LKLF

Target/Specificity

This KLF2 antibody is generated from rabbits immunized with a KLH conjugated synthetic peptide between 13-42 amino acids from the N-terminal region of human KLF2.

Dilution

WB~~1:1000

Format

Purified polyclonal antibody supplied in PBS with 0.09% (W/V) sodium azide. This antibody is purified through a protein A column, followed by peptide affinity purification.

Storage

Maintain refrigerated at 2-8°C for up to 2 weeks. For long term storage store at -20°C in small aliquots to prevent freeze-thaw cycles.

Precautions

KLF2 Antibody (N-term) is for research use only and not for use in diagnostic or therapeutic procedures.

KLF2 Antibody (N-term) - Protein Information

Name KLF2

Synonyms LKLF

Function Transcription factor that binds to the CACCC box in the promoter of target genes such

as HBB/beta globin or NOV and activates their transcription (PubMed:[21063504](#)). Might be involved in transcriptional regulation by modulating the binding of the RARA nuclear receptor to RARE DNA elements (PubMed:[28167758](#)).

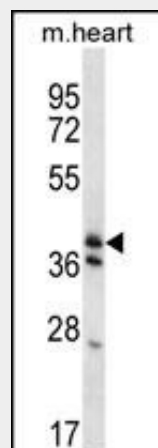
Cellular Location
Nucleus.

KLF2 Antibody (N-term) - Protocols

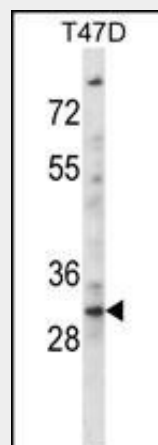
Provided below are standard protocols that you may find useful for product applications.

- [Western Blot](#)
- [Blocking Peptides](#)
- [Dot Blot](#)
- [Immunohistochemistry](#)
- [Immunofluorescence](#)
- [Immunoprecipitation](#)
- [Flow Cytometry](#)
- [Cell Culture](#)

KLF2 Antibody (N-term) - Images



KLF2 Antibody (N-term) (Cat. #AP14973a) western blot analysis in mouse heart tissue lysates (35ug/lane). This demonstrates the KLF2 antibody detected the KLF2 protein (arrow).



KLF2 Antibody (N-term) (Cat. #AP14973a) western blot analysis in T47D cell line lysates (35ug/lane). This demonstrates the KLF2 antibody detected the KLF2 protein (arrow).

KLF2 Antibody (N-term) - Background

KLF2 binds to the CACCC box in the beta-globin gene promoter and activates transcription (By similarity).

KLF2 Antibody (N-term) - References

Lin, Z., et al. Arterioscler. Thromb. Vasc. Biol. 30(10):1952-1959(2010)
Zahlten, J., et al. J. Immunol. 185(1):597-604(2010)
Wang, W., et al. Blood 115(14):2971-2979(2010)
Boon, R.A., et al. Blood 115(12):2533-2542(2010)
Villarreal, G. Jr., et al. Biochem. Biophys. Res. Commun. 391(1):984-989(2010)

KLF2 Antibody (N-term) - Citations

- [Cilostazol Induces eNOS and TM Expression via Activation with Sirtuin 1/Krüppel-like Factor 2 Pathway in Endothelial Cells](#)
- [Induces Thrombomodulin Expression and Tissue-Type Plasminogen Activator Secretion via the Activation of Krüppel-Like Factor 2 within Endothelial Cells](#)
- [ERK5/HDAC5-Mediated, Resveratrol- and Pterostilbene-Induced Expression of MnSOD in Human Endothelial Cells](#)
- [Activation of Krüppel-Like Factor 2 with Ginkgo Biloba Extract Induces eNOS Expression and Increases NO Production in Cultured Human Umbilical Endothelial Cells](#)