

SMURF1 Antibody (Center)
Affinity Purified Rabbit Polyclonal Antibody (Pab)
Catalog # AP14957c

Specification

SMURF1 Antibody (Center) - Product Information

Application	WB,E
Primary Accession	O9HCE7
Other Accession	O9CUN6 , NP_851994.1 , NP_065162.1
Reactivity	Mouse
Host	Rabbit
Clonality	Polyclonal
Isotype	Rabbit IgG
Calculated MW	86114
Antigen Region	352-381

SMURF1 Antibody (Center) - Additional Information

Gene ID 57154

Other Names

E3 ubiquitin-protein ligase SMURF1, hSMURF1, 632-, SMAD ubiquitination regulatory factor 1, SMAD-specific E3 ubiquitin-protein ligase 1, SMURF1, KIAA1625

Target/Specificity

This SMURF1 antibody is generated from rabbits immunized with a KLH conjugated synthetic peptide between 352-381 amino acids from the Central region of human SMURF1.

Dilution

WB~~1:1000

Format

Purified polyclonal antibody supplied in PBS with 0.09% (W/V) sodium azide. This antibody is purified through a protein A column, followed by peptide affinity purification.

Storage

Maintain refrigerated at 2-8°C for up to 2 weeks. For long term storage store at -20°C in small aliquots to prevent freeze-thaw cycles.

Precautions

SMURF1 Antibody (Center) is for research use only and not for use in diagnostic or therapeutic procedures.

SMURF1 Antibody (Center) - Protein Information

Name SMURF1

Synonyms KIAA1625

Function E3 ubiquitin-protein ligase that acts as a negative regulator of BMP signaling pathway. Mediates ubiquitination and degradation of SMAD1 and SMAD5, 2 receptor-regulated SMADs specific for the BMP pathway. Promotes ubiquitination and subsequent proteasomal degradation of TRAF family members and RHOA. Promotes ubiquitination and subsequent proteasomal degradation of MAVS (PubMed:[23087404](#)). Acts as an antagonist of TGF-beta signaling by ubiquitinating TGFBR1 and targeting it for degradation (PubMed:[21791611](#)). Plays a role in dendrite formation by melanocytes (PubMed:[23999003](#)).

Cellular Location

Cytoplasm. Cell membrane; Peripheral membrane protein; Cytoplasmic side

Tissue Location

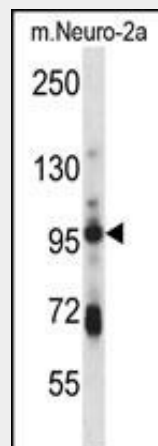
Expressed in melanocytes (PubMed:[23999003](#)).

SMURF1 Antibody (Center) - Protocols

Provided below are standard protocols that you may find useful for product applications.

- [Western Blot](#)
- [Blocking Peptides](#)
- [Dot Blot](#)
- [Immunohistochemistry](#)
- [Immunofluorescence](#)
- [Immunoprecipitation](#)
- [Flow Cytometry](#)
- [Cell Culture](#)

SMURF1 Antibody (Center) - Images



SMURF1 Antibody (Center) (Cat. #AP14957c) western blot analysis in mouse Neuro-2a cell line lysates (35ug/lane). This demonstrates the SMURF1 antibody detected the SMURF1 protein (arrow).

SMURF1 Antibody (Center) - Background

This gene encodes a ubiquitin ligase that is specific for receptor-regulated SMAD proteins in the bone morphogenetic protein (BMP) pathway. A similar protein in *Xenopus* is involved in embryonic pattern formation. Alternative splicing results in multiple transcript variants encoding different isoforms. An

additional transcript variant has been identified, but its full length sequence has not been determined.

SMURF1 Antibody (Center) - References

Li, S., et al. Mol. Cell. Biochem. 338 (1-2), 11-17 (2010) :
Franke, A., et al. Nat. Genet. 42(4):292-294(2010)
Alarcon, C., et al. Cell 139(4):757-769(2009)
Croce, L.E., et al. J. Biol. Chem. 284(20):13301-13305(2009)
Narimatsu, M., et al. Cell 137(2):295-307(2009)