

**ACTN2 Antibody (C-term)**  
**Affinity Purified Rabbit Polyclonal Antibody (Pab)**  
**Catalog # AP14950b**

**Specification**

---

**ACTN2 Antibody (C-term) - Product Information**

Application	WB,E
Primary Accession	<a href="#">P35609</a>
Other Accession	<a href="#">O9JI91</a> , <a href="#">Q3ZC55</a> , <a href="#">NP_001094.1</a>
Reactivity	Mouse
Predicted	Bovine
Host	Rabbit
Clonality	Polyclonal
Isotype	Rabbit IgG
Calculated MW	103854
Antigen Region	751-779

**ACTN2 Antibody (C-term) - Additional Information**

**Gene ID** 88

**Other Names**

Alpha-actinin-2, Alpha-actinin skeletal muscle isoform 2, F-actin cross-linking protein, ACTN2

**Target/Specificity**

This ACTN2 antibody is generated from rabbits immunized with a KLH conjugated synthetic peptide between 751-779 amino acids from the C-terminal region of human ACTN2.

**Dilution**

WB~~1:1000

**Format**

Purified polyclonal antibody supplied in PBS with 0.09% (W/V) sodium azide. This antibody is purified through a protein A column, followed by peptide affinity purification.

**Storage**

Maintain refrigerated at 2-8°C for up to 2 weeks. For long term storage store at -20°C in small aliquots to prevent freeze-thaw cycles.

**Precautions**

ACTN2 Antibody (C-term) is for research use only and not for use in diagnostic or therapeutic procedures.

**ACTN2 Antibody (C-term) - Protein Information**

**Name** ACTN2

**Function** F-actin cross-linking protein which is thought to anchor actin to a variety of intracellular

structures. This is a bundling protein.

#### Cellular Location

Cytoplasm, myofibril, sarcomere, Z line. Note=Colocalizes with MYOZ1 and FLNC at the Z-lines of skeletal muscle

#### Tissue Location

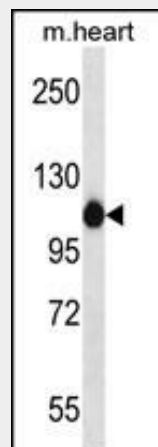
Expressed in both skeletal and cardiac muscle.

### ACTN2 Antibody (C-term) - Protocols

Provided below are standard protocols that you may find useful for product applications.

- [Western Blot](#)
- [Blocking Peptides](#)
- [Dot Blot](#)
- [Immunohistochemistry](#)
- [Immunofluorescence](#)
- [Immunoprecipitation](#)
- [Flow Cytometry](#)
- [Cell Culture](#)

### ACTN2 Antibody (C-term) - Images



ACTN2 Antibody (C-term) (Cat. #AP14950b) western blot analysis in mouse heart tissue lysates (35ug/lane). This demonstrates the ACTN2 antibody detected the ACTN2 protein (arrow).

### ACTN2 Antibody (C-term) - Background

Alpha actinins belong to the spectrin gene superfamily which represents a diverse group of cytoskeletal proteins, including the alpha and beta spectrins and dystrophins. Alpha actinin is an actin-binding protein with multiple roles in different cell types. In nonmuscle cells, the cytoskeletal isoform is found along microfilament bundles and adherens-type junctions, where it is involved in binding actin to the membrane. In contrast, skeletal, cardiac, and smooth muscle isoforms are localized to the Z-disc and analogous dense bodies, where they help anchor the myofibrillar actin filaments. This gene encodes a muscle-specific, alpha actinin isoform that is expressed in both skeletal and

cardiac muscles.

### **ACTN2 Antibody (C-term) - References**

Saus, E., et al. J Psychiatr Res 44(14):971-978(2010)  
Rose, J.E., et al. Mol. Med. 16 (7-8), 247-253 (2010) :  
Zimmerman, R.S., et al. Genet. Med. 12(5):268-278(2010)  
Joslyn, G., et al. Alcohol. Clin. Exp. Res. 34(5):800-812(2010)  
Chiu, C., et al. J. Am. Coll. Cardiol. 55(11):1127-1135(2010)