

Actin (ACTB/ACTC) Antibody (Center)
Purified Rabbit Polyclonal Antibody (Pab)
Catalog # AP1491c

Specification

Actin (ACTB/ACTC) Antibody (Center) - Product Information

Application	WB, IHC-P,E
Primary Accession	P68032
Other Accession	P60010 , P68136 , P68135 , P68137 , P68134 , P68133 , P68139 , P68138 , P63269 , P63268 , P63267 , P63270 , O5E9B5 , A2BDB0 , P63259 , P63260 , P63261 , O5ZMQ2 , P63258 , P04751 , P68035 , P68033 , P68034 , O3ZC07 , O93400 , P60711 , P29751 , O6QAO1 , P60710 , O4R561 , P60709 , P48975
Reactivity Predicted	Human C.Elegans, Drosophila, Xenopus, Chicken, Bovine, Mouse, Rabbit, Rat, Zebrafish, Hamster, Horse, Monkey, Pig, Sheep, Yeast
Host	Rabbit
Clonality	Polyclonal
Isotype	Rabbit IgG
Calculated MW	42019
Antigen Region	189-218

Actin (ACTB/ACTC) Antibody (Center) - Additional Information

Gene ID 70

Other Names

Actin, alpha cardiac muscle 1, Alpha-cardiac actin, ACTC1, ACTC

Target/Specificity

This Actin (ACTB/ACTC) antibody is generated from rabbits immunized with a KLH conjugated synthetic peptide between 189-218 amino acids from the Central region of human Actin (ACTB/ACTC).

Dilution

WB~~1:1000
IHC-P~~1:10~50

Format

Purified polyclonal antibody supplied in PBS with 0.09% (W/V) sodium azide. This antibody is prepared by Saturated Ammonium Sulfate (SAS) precipitation followed by dialysis against PBS.

Storage

Maintain refrigerated at 2-8°C for up to 2 weeks. For long term storage store at -20°C in small aliquots to prevent freeze-thaw cycles.

Precautions

Actin (ACTB/ACTC) Antibody (Center) is for research use only and not for use in diagnostic or therapeutic procedures.

Actin (ACTB/ACTC) Antibody (Center) - Protein Information

Name ACTC1

Synonyms ACTC

Function Actins are highly conserved proteins that are involved in various types of cell motility and are ubiquitously expressed in all eukaryotic cells.

Cellular Location

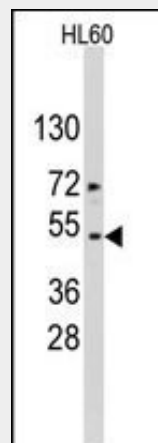
Cytoplasm, cytoskeleton.

Actin (ACTB/ACTC) Antibody (Center) - Protocols

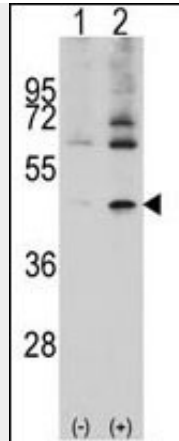
Provided below are standard protocols that you may find useful for product applications.

- [Western Blot](#)
- [Blocking Peptides](#)
- [Dot Blot](#)
- [Immunohistochemistry](#)
- [Immunofluorescence](#)
- [Immunoprecipitation](#)
- [Flow Cytometry](#)
- [Cell Culture](#)

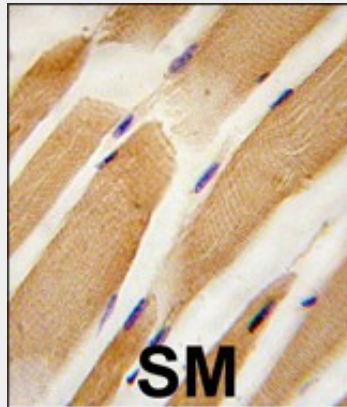
Actin (ACTB/ACTC) Antibody (Center) - Images



Western blot analysis of ACTB/ACTC Antibody (Center) in HL60 cell line lysates (35ug/lane). Target protein (arrow) was detected using the purified Pab.



Western blot analysis of ACTB/ACTC (arrow) using rabbit polyclonal ACTB/ACTC Antibody (Center) (Cat.#AP1491a).293 cell lysates (2 ug/lane) either nontransfected (Lane 1) or transiently transfected with the ACTB/ACTC gene (Lane 2) (Origene Technologies).



Formalin-fixed and paraffin-embedded human skeletal muscle tissue reacted with ACTB/ACTC antibody (Center), which was peroxidase-conjugated to the secondary antibody, followed by DAB staining. This data demonstrates the use of this antibody for immunohistochemistry; clinical relevance has not been evaluated.

Actin (ACTB/ACTC) Antibody (Center) - Background

Actins are highly conserved proteins that are involved in cell motility, structure, and integrity. ACTB/ACTC are nonmuscle cytoskeletal actins and major constituents of the contractile apparatus. Defects in ACTB are a cause of juvenile-onset dystonia. Defects in ACTC have been associated with idiopathic dilated cardiomyopathy (IDC) and familial hypertrophic cardiomyopathy (FHC).

Actin (ACTB/ACTC) Antibody (Center) - References

- Villebeck,L., Biochemistry 46 (44), 12639-12647 (2007)
- Avizienyte,E., Exp. Cell Res. 313 (15), 3175-3188 (2007)
- Bouldin,A.A., Muscle Nerve 35 (2), 254-258 (2007)