

**PRL Antibody (C-term)**  
**Affinity Purified Rabbit Polyclonal Antibody (Pab)**  
**Catalog # AP14917b**

**Specification**

---

**PRL Antibody (C-term) - Product Information**

Application	<b>WB, FC,E</b>
Primary Accession	<a href="#">P01236</a>
Other Accession	<a href="#">Q28632</a> , <a href="#">P01238</a> , <a href="#">NP_000939.1</a> , <a href="#">NP_001157030.1</a> , <a href="#">P12420</a>
Reactivity	<b>Human</b>
Predicted	<b>Horse, Pig, Rabbit</b>
Host	<b>Rabbit</b>
Clonality	<b>Polyclonal</b>
Isotype	<b>Rabbit IgG</b>
Calculated MW	<b>25876</b>
Antigen Region	<b>188-216</b>

**PRL Antibody (C-term) - Additional Information**

**Gene ID** 5617

**Other Names**

Prolactin, PRL, PRL

**Target/Specificity**

This PRL antibody is generated from rabbits immunized with a KLH conjugated synthetic peptide between 188-216 amino acids from the C-terminal region of human PRL.

**Dilution**

WB~~1:1000

FC~~1:10~50

**Format**

Purified polyclonal antibody supplied in PBS with 0.09% (W/V) sodium azide. This antibody is purified through a protein A column, followed by peptide affinity purification.

**Storage**

Maintain refrigerated at 2-8°C for up to 2 weeks. For long term storage store at -20°C in small aliquots to prevent freeze-thaw cycles.

**Precautions**

PRL Antibody (C-term) is for research use only and not for use in diagnostic or therapeutic procedures.

**PRL Antibody (C-term) - Protein Information**

**Name** PRL

**Function** Prolactin acts primarily on the mammary gland by promoting lactation.

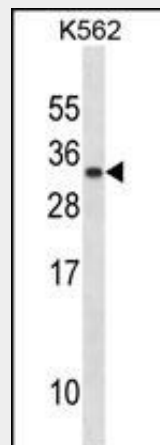
**Cellular Location**  
Secreted.

### PRL Antibody (C-term) - Protocols

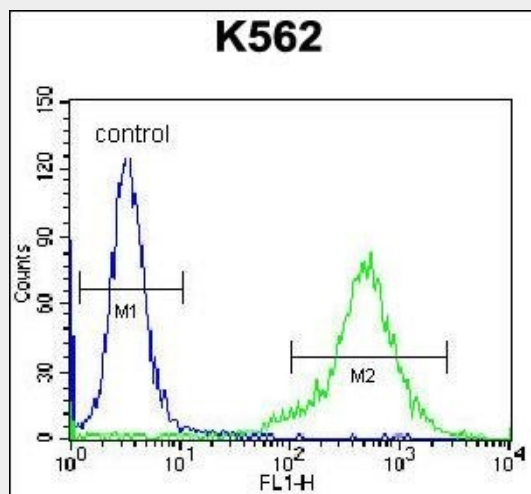
Provided below are standard protocols that you may find useful for product applications.

- [Western Blot](#)
- [Blocking Peptides](#)
- [Dot Blot](#)
- [Immunohistochemistry](#)
- [Immunofluorescence](#)
- [Immunoprecipitation](#)
- [Flow Cytometry](#)
- [Cell Culture](#)

### PRL Antibody (C-term) - Images



PRL Antibody (C-term) (Cat. #AP14917b) western blot analysis in K562 cell line lysates (35ug/lane). This demonstrates the PRL antibody detected the PRL protein (arrow).



PRL Antibody (C-term) (Cat. #AP14917b) flow cytometric analysis of K562 cells (right histogram)

compared to a negative control cell (left histogram). FITC-conjugated donkey-anti-rabbit secondary antibodies were used for the analysis.

#### **PRL Antibody (C-term) - Background**

Prolactin acts primarily on the mammary gland by promoting lactation.

#### **PRL Antibody (C-term) - References**

Ucisik-Akkaya, E., et al. Mol. Hum. Reprod. 16(10):770-777(2010)  
Strauss, J.S., et al. Psychoneuroendocrinology 35(9):1422-1428(2010)  
Gordon, I., et al. Horm Behav 58(3):513-518(2010)  
Voorhees, J.L., et al. J. Biol. Chem. 285(26):20022-20030(2010)  
Yokoyama, K., et al. Nephron Clin Pract 115 (4), C237-C243 (2010) :