

**PDLIM1 Antibody (C-term)**  
**Affinity Purified Rabbit Polyclonal Antibody (Pab)**  
**Catalog # AP14914b**

**Specification**

---

**PDLIM1 Antibody (C-term) - Product Information**

Application	WB,E
Primary Accession	<a href="#">O00151</a>
Other Accession	<a href="#">NP_066272.1</a>
Reactivity	Human
Host	Rabbit
Clonality	Polyclonal
Isotype	Rabbit IgG
Calculated MW	36072
Antigen Region	254-282

**PDLIM1 Antibody (C-term) - Additional Information**

**Gene ID** 9124

**Other Names**

PDZ and LIM domain protein 1, C-terminal LIM domain protein 1, Elfin, LIM domain protein CLP-36, PDLIM1, CLIM1, CLP36

**Target/Specificity**

This PDLIM1 antibody is generated from rabbits immunized with a KLH conjugated synthetic peptide between 254-282 amino acids from the C-terminal region of human PDLIM1.

**Dilution**

WB~~1:1000

**Format**

Purified polyclonal antibody supplied in PBS with 0.09% (W/V) sodium azide. This antibody is purified through a protein A column, followed by peptide affinity purification.

**Storage**

Maintain refrigerated at 2-8°C for up to 2 weeks. For long term storage store at -20°C in small aliquots to prevent freeze-thaw cycles.

**Precautions**

PDLIM1 Antibody (C-term) is for research use only and not for use in diagnostic or therapeutic procedures.

**PDLIM1 Antibody (C-term) - Protein Information**

**Name** PDLIM1

**Synonyms** CLIM1, CLP36

**Function** Cytoskeletal protein that may act as an adapter that brings other proteins (like kinases) to the cytoskeleton (PubMed:[10861853](#)). Involved in assembly, disassembly and directioning of stress fibers in fibroblasts. Required for the localization of ACTN1 and PALLD to stress fibers. Required for cell migration and in maintaining cell polarity of fibroblasts (By similarity).

#### Cellular Location

Cytoplasm. Cytoplasm, cytoskeleton. Cytoplasm, myofibril, sarcomere, Z line Note=Associates with actin stress fibers

#### Tissue Location

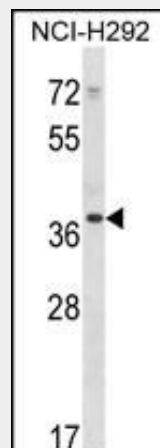
Strongly expressed in the heart and skeletal muscle, moderately expressed in the spleen, small intestine, colon, placenta, and lung. A lower level expression is seen in liver, thymus, kidney, prostate and pancreas and is not found in the brain, testis, ovary, and peripheral blood leukocytes

### PDLIM1 Antibody (C-term) - Protocols

Provided below are standard protocols that you may find useful for product applications.

- [Western Blot](#)
- [Blocking Peptides](#)
- [Dot Blot](#)
- [Immunohistochemistry](#)
- [Immunofluorescence](#)
- [Immunoprecipitation](#)
- [Flow Cytometry](#)
- [Cell Culture](#)

### PDLIM1 Antibody (C-term) - Images



PDLIM1 Antibody (C-term) (Cat. #AP14914b) western blot analysis in NCI-H292 cell line lysates (35ug/lane). This demonstrates the PDLIM1 antibody detected the PDLIM1 protein (arrow).

### PDLIM1 Antibody (C-term) - Background

PDLIM1 is a Cytoskeletal protein that may act as an adapter that brings other proteins (like kinases) to the cytoskeleton.

### PDLIM1 Antibody (C-term) - References

Chapuis, J., et al. Mol. Psychiatry 14(11):1004-1016(2009)

Sugiyama, N., et al. Mol. Cell Proteomics 6(6):1103-1109(2007)

Silverberg, M.S., et al. Eur. J. Hum. Genet. 15(3):328-335(2007)

Miehe, U., et al. Histochem. Cell Biol. 126(4):465-471(2006)

Grupe, A., et al. Am. J. Hum. Genet. 78(1):78-88(2006)