

**BEND4 Antibody (N-term)**  
**Affinity Purified Rabbit Polyclonal Antibody (Pab)**  
**Catalog # AP14883a**

## Specification

---

### BEND4 Antibody (N-term) - Product Information

Application	WB, FC,E
Primary Accession	<a href="#">O6ZU67</a>
Other Accession	<a href="#">NP_997289.2</a> , <a href="#">NP_001153019.1</a>
Reactivity	Human
Host	Rabbit
Clonality	Polyclonal
Isotype	Rabbit IgG
Calculated MW	58375
Antigen Region	16-44

### BEND4 Antibody (N-term) - Additional Information

**Gene ID** 389206

#### Other Names

BEN domain-containing protein 4, Coiled-coil domain-containing protein 4, BEND4, CCDC4

#### Target/Specificity

This BEND4 antibody is generated from rabbits immunized with a KLH conjugated synthetic peptide between 16-44 amino acids from the N-terminal region of human BEND4.

#### Dilution

WB~~1:1000

FC~~1:10~50

#### Format

Purified polyclonal antibody supplied in PBS with 0.09% (W/V) sodium azide. This antibody is purified through a protein A column, followed by peptide affinity purification.

#### Storage

Maintain refrigerated at 2-8°C for up to 2 weeks. For long term storage store at -20°C in small aliquots to prevent freeze-thaw cycles.

#### Precautions

BEND4 Antibody (N-term) is for research use only and not for use in diagnostic or therapeutic procedures.

### BEND4 Antibody (N-term) - Protein Information

**Name** BEND4

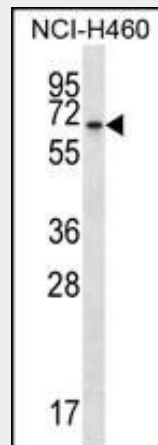
**Synonyms** CCDC4

## BEND4 Antibody (N-term) - Protocols

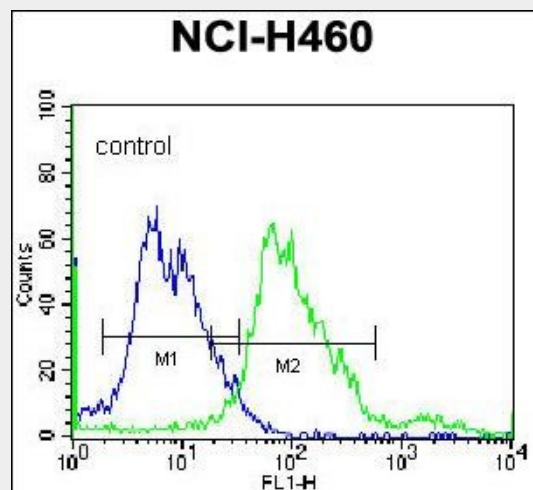
Provided below are standard protocols that you may find useful for product applications.

- [Western Blot](#)
- [Blocking Peptides](#)
- [Dot Blot](#)
- [Immunohistochemistry](#)
- [Immunofluorescence](#)
- [Immunoprecipitation](#)
- [Flow Cytometry](#)
- [Cell Culture](#)

## BEND4 Antibody (N-term) - Images



BEND4 Antibody (N-term) (Cat. #AP14883a) western blot analysis in NCI-H460 cell line lysates (35ug/lane). This demonstrates the BEND4 antibody detected the BEND4 protein (arrow).



BEND4 Antibody (N-term) (Cat. #AP14883a) flow cytometric analysis of NCI-H460 cells (right histogram) compared to a negative control cell (left histogram). FITC-conjugated donkey-anti-rabbit secondary antibodies were used for the analysis.

## BEND4 Antibody (N-term) - References

Matsuoka, S., et al. Science 316(5828):1160-1166(2007)

Strausberg, R.L., et al. Proc. Natl. Acad. Sci. U.S.A. 99(26):16899-16903(2002)