

**ORC3L Antibody (N-term)**  
**Affinity Purified Rabbit Polyclonal Antibody (Pab)**  
**Catalog # AP14874a****Specification**

---

**ORC3L Antibody (N-term) - Product Information**

Application	<b>WB, IHC-P,E</b>
Primary Accession	<a href="#">O9UBD5</a>
Other Accession	<a href="#">NP_036513.2</a> , <a href="#">NP_862820.1</a>
Reactivity	<b>Human</b>
Host	<b>Rabbit</b>
Clonality	<b>Polyclonal</b>
Isotype	<b>Rabbit IgG</b>
Calculated MW	<b>82254</b>
Antigen Region	<b>17-46</b>

**ORC3L Antibody (N-term) - Additional Information****Gene ID** 23595**Other Names**

Origin recognition complex subunit 3, Origin recognition complex subunit Latheo, ORC3, LATHEO, ORC3L

**Target/Specificity**

This ORC3L antibody is generated from rabbits immunized with a KLH conjugated synthetic peptide between 17-46 amino acids from the N-terminal region of human ORC3L.

**Dilution**WB~~1:1000  
IHC-P~~1:10~50**Format**

Purified polyclonal antibody supplied in PBS with 0.09% (W/V) sodium azide. This antibody is purified through a protein A column, followed by peptide affinity purification.

**Storage**

Maintain refrigerated at 2-8°C for up to 2 weeks. For long term storage store at -20°C in small aliquots to prevent freeze-thaw cycles.

**Precautions**

ORC3L Antibody (N-term) is for research use only and not for use in diagnostic or therapeutic procedures.

**ORC3L Antibody (N-term) - Protein Information****Name** ORC3

**Synonyms** LATHEO, ORC3L

**Function** Component of the origin recognition complex (ORC) that binds origins of replication. DNA-binding is ATP-dependent. The specific DNA sequences that define origins of replication have not been identified yet. ORC is required to assemble the pre-replication complex necessary to initiate DNA replication. Binds histone H3 and H4 trimethylation marks H3K9me3, H3K27me3 and H4K20me3.

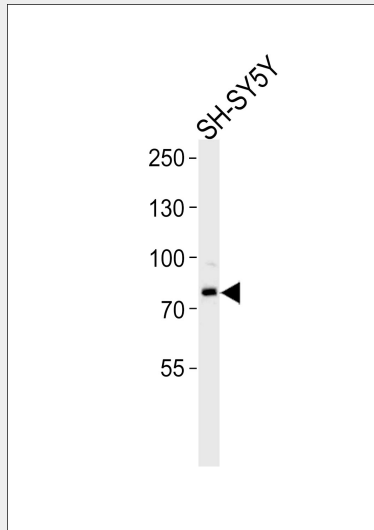
**Cellular Location**

Nucleus. Chromosome

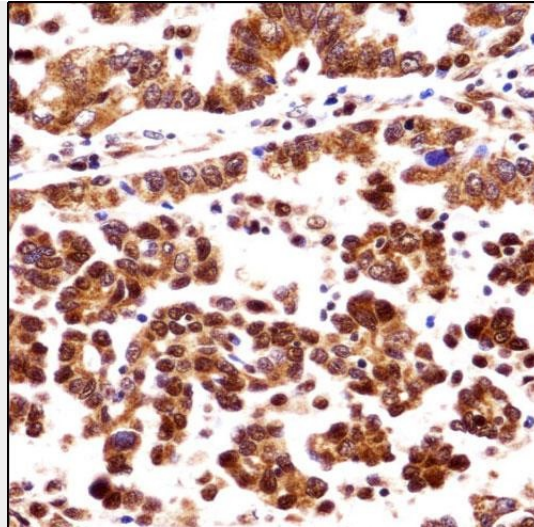
**ORC3L Antibody (N-term) - Protocols**

Provided below are standard protocols that you may find useful for product applications.

- [Western Blot](#)
- [Blocking Peptides](#)
- [Dot Blot](#)
- [Immunohistochemistry](#)
- [Immunofluorescence](#)
- [Immunoprecipitation](#)
- [Flow Cytometry](#)
- [Cell Culture](#)

**ORC3L Antibody (N-term) - Images**

ORC3L Antibody (N-term) (Cat. #AP14874a) western blot analysis in SH-SY5Y cell line lysates (35ug/lane). This demonstrates the ORC3L antibody detected the ORC3L protein (arrow).



ORC3L Antibody (N-term) (AP14874a) immunohistochemistry analysis in formalin fixed and paraffin embedded human lung adenocarcinoma followed by peroxidase conjugation of the secondary antibody and DAB staining. This data demonstrates the use of ORC3L Antibody (N-term) for immunohistochemistry. Clinical relevance has not been evaluated.

#### **ORC3L Antibody (N-term) - Background**

The origin recognition complex (ORC) is a highly conserved six subunits protein complex essential for the initiation of the DNA replication in eukaryotic cells. Studies in yeast demonstrated that ORC binds specifically to origins of replication and serves as a platform for the assembly of additional initiation factors such as Cdc6 and Mcm proteins. The protein encoded by this gene is a subunit of the ORC complex. Studies of a similar gene in *Drosophila* suggested a possible role of this protein in neuronal proliferation and olfactory memory. Alternatively spliced transcript variants encoding distinct isoforms have been reported for this gene.

#### **ORC3L Antibody (N-term) - References**

Enjuanes, A., et al. *Cancer Res.* 68(24):10178-10186(2008)  
DeRosse, P., et al. *Schizophr Bull* 34(6):1047-1053(2008)  
Siddiqui, K., et al. *J. Biol. Chem.* 282(44):32370-32383(2007)  
Matsuoka, S., et al. *Science* 316(5828):1160-1166(2007)  
Matsuoka, S., et al. *Science* 316(5828):1160-1166(2007)