

**FAM163A Antibody (Center)**  
**Affinity Purified Rabbit Polyclonal Antibody (Pab)**  
**Catalog # AP14861c**

**Specification**

---

**FAM163A Antibody (Center) - Product Information**

Application	WB,E
Primary Accession	<a href="#">O96GL9</a>
Other Accession	<a href="#">NP_775780.1</a>
Reactivity	Human
Host	Rabbit
Clonality	Polyclonal
Isotype	Rabbit IgG
Calculated MW	17641
Antigen Region	32-61

**FAM163A Antibody (Center) - Additional Information**

**Gene ID** 148753

**Other Names**

Protein FAM163A, Cebelin, Neuroblastoma-derived secretory protein, FAM163A, C1orf76, NDSP

**Target/Specificity**

This FAM163A antibody is generated from rabbits immunized with a KLH conjugated synthetic peptide between 32-61 amino acids from the Central region of human FAM163A.

**Dilution**

WB~~1:1000

**Format**

Purified polyclonal antibody supplied in PBS with 0.09% (W/V) sodium azide. This antibody is purified through a protein A column, followed by peptide affinity purification.

**Storage**

Maintain refrigerated at 2-8°C for up to 2 weeks. For long term storage store at -20°C in small aliquots to prevent freeze-thaw cycles.

**Precautions**

FAM163A Antibody (Center) is for research use only and not for use in diagnostic or therapeutic procedures.

**FAM163A Antibody (Center) - Protein Information**

**Name** FAM163A

**Synonyms** C1orf76, NDSP

**Cellular Location**

Membrane; Single-pass membrane protein

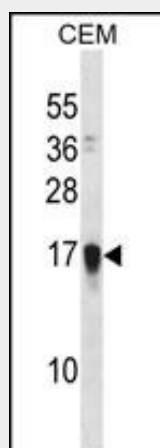
**Tissue Location**

Highly expressed in neuroblastoma compared to other tissues, suggesting that it may be used as a marker for metastasis in bone marrow.

**FAM163A Antibody (Center) - Protocols**

Provided below are standard protocols that you may find useful for product applications.

- [Western Blot](#)
- [Blocking Peptides](#)
- [Dot Blot](#)
- [Immunohistochemistry](#)
- [Immunofluorescence](#)
- [Immunoprecipitation](#)
- [Flow Cytometry](#)
- [Cell Culture](#)

**FAM163A Antibody (Center) - Images**

FAM163A Antibody (Center) (Cat. #AP14861c) western blot analysis in CEM cell line lysates (35ug/lane). This demonstrates the FAM163A antibody detected the FAM163A protein (arrow).

**FAM163A Antibody (Center) - References**

- Rose, J. Phd, et al. Mol. Med. (2010) In press :  
Vasudevan, S.A., et al. Mol. Cancer Ther. 8(8):2478-2489(2009)  
Vasudevan, S.A., et al. J. Pediatr. Surg. 42(1):148-152(2007)