

LIN28B Antibody (C-term)
Purified Rabbit Polyclonal Antibody (Pab)
Catalog # AP1485b**Specification**

LIN28B Antibody (C-term) - Product Information

Application	WB, FC,E
Primary Accession	O6ZN17
Reactivity	Human
Host	Rabbit
Clonality	Polyclonal
Isotype	Rabbit IgG
Antigen Region	218-250

LIN28B Antibody (C-term) - Additional Information**Gene ID** 389421**Other Names**

Protein lin-28 homolog B, Lin-28B, LIN28B, CSDD2

Target/Specificity

This LIN28B antibody is generated from rabbits immunized with a KLH conjugated synthetic peptide between 218-250 amino acids from the C-terminal region of human LIN28B.

DilutionWB~~1:1000
FC~~1:10~50**Format**

Purified polyclonal antibody supplied in PBS with 0.09% (W/V) sodium azide. This antibody is prepared by Saturated Ammonium Sulfate (SAS) precipitation followed by dialysis against PBS.

Storage

Maintain refrigerated at 2-8°C for up to 2 weeks. For long term storage store at -20°C in small aliquots to prevent freeze-thaw cycles.

Precautions

LIN28B Antibody (C-term) is for research use only and not for use in diagnostic or therapeutic procedures.

LIN28B Antibody (C-term) - Protein Information**Name** LIN28B**Synonyms** CSDD2**Function** Suppressor of microRNA (miRNA) biogenesis, including that of let-7 and possibly of

miR107, miR-143 and miR-200c. Binds primary let-7 transcripts (pri-let-7), including pri-let-7g and pri-let-7a-1, and sequester them in the nucleolus, away from the microprocessor complex, hence preventing their processing into mature miRNA (PubMed:[22118463](#)). Does not act on pri-miR21 (PubMed:[22118463](#)). The repression of let-7 expression is required for normal development and contributes to maintain the pluripotent state of embryonic stem cells by preventing let-7-mediated differentiation. When overexpressed, recruits ZCCHC11/TUT4 uridylyltransferase to pre-let-7 transcripts, leading to their terminal uridylation and degradation (PubMed:[19703396](#)). This activity might not be relevant in vivo, as LIN28B-mediated inhibition of let-7 miRNA maturation appears to be ZCCHC11-independent (PubMed:[22118463](#)). Interaction with target pre-miRNAs occurs via an 5'- GGAG-3' motif in the pre-miRNA terminal loop. Mediates MYC-induced let-7 repression (By similarity). When overexpressed, isoform 1 stimulates growth of the breast adenocarcinoma cell line MCF-7. Isoform 2 has no effect on cell growth.

Cellular Location

Nucleus. Nucleus, nucleolus. Cytoplasm Note=Predominantly nucleolar (PubMed:[22118463](#)). In Huh7 cells, predominantly cytoplasmic, with only a subset of cells exhibiting strong nuclear staining; however, the specificity of the polyclonal antibody used in these experiments has not been documented (PubMed:[16971064](#)).

Tissue Location

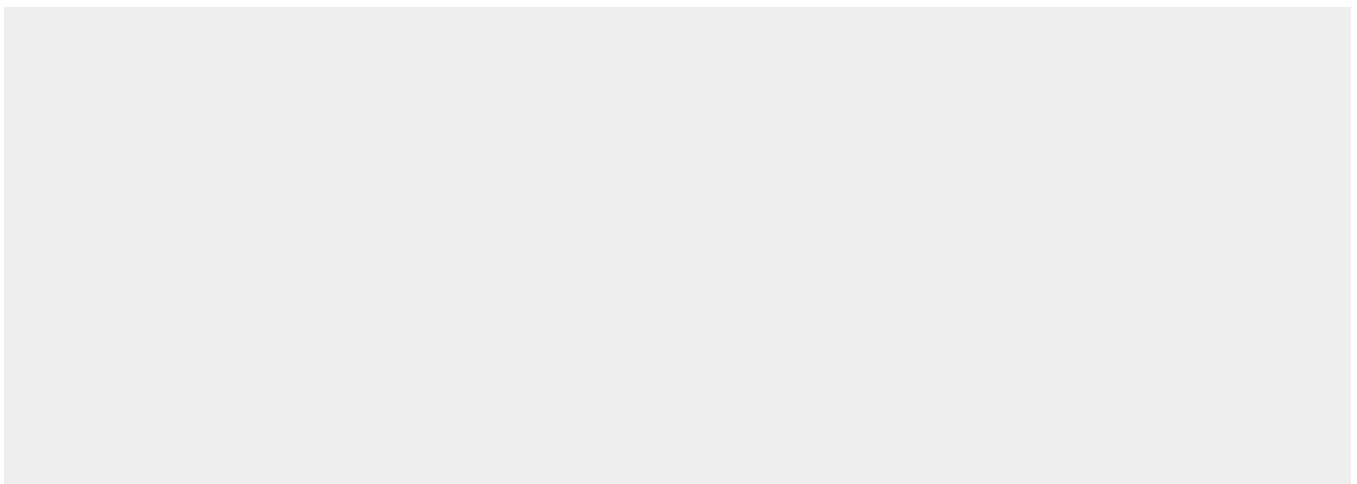
Expressed at high levels in the placenta and, at much lower, in testis and fetal liver (PubMed:[16971064](#)). Isoform 1 is only detected in placenta and in moderately and poorly differentiated hepatocellular carcinoma cells (at protein level). Isoform 2 is detected in fetal liver, non-tumor liver tissues, as well as well-differentiated tumor tissues (at protein level). Tends to be up-regulated in triple-negative (ER-,PR-,HER2-) breast tumors, as well as in liver, ovarian, and thyroid carcinomas (PubMed:[22118463](#))

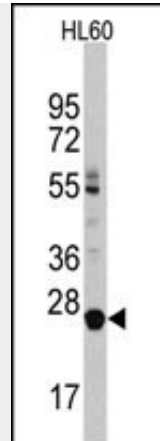
LIN28B Antibody (C-term) - Protocols

Provided below are standard protocols that you may find useful for product applications.

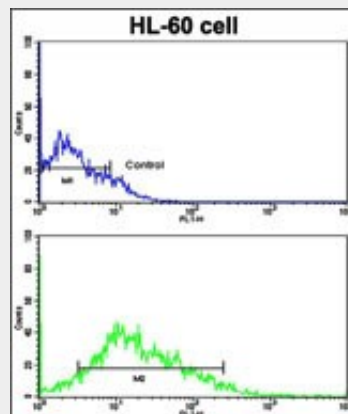
- [Western Blot](#)
- [Blocking Peptides](#)
- [Dot Blot](#)
- [Immunohistochemistry](#)
- [Immunofluorescence](#)
- [Immunoprecipitation](#)
- [Flow Cytometry](#)
- [Cell Culture](#)

LIN28B Antibody (C-term) - Images





Western blot analysis of LIN28B Antibody (C-term) in HL60 cell line lysates (35ug/lane). LIN28B (arrow) was detected using the purified Pab.



Flow cytometric analysis of HL-60 cells using LIN28B Antibody (C-term)(bottom histogram) compared to a negative control cell (top histogram). FITC-conjugated goat-anti-rabbit secondary antibodies were used for the analysis.

LIN28B Antibody (C-term) - Background

Lin-28 homolog B (LIN28B) is overexpressed in hepatocellular carcinoma. The heterochronic gene lin-28 is a key regulator of developmental timing in the nematode *Caenorhabditis elegans*. Similar with lin-28 proteins, LIN28B conserves a cold shock domain and a pair of CCHC zinc finger domains. Phylogenetic analysis suggests that they might arise as a result of duplication from an ancestral gene. Overexpression of LIN28B was noted in most HCC cell lines and clinical samples. A short LIN28B isoform was also identified in non-tumor liver tissue and fetal liver. Although predominantly localized in the cytoplasm, LIN28B protein shows cell cycle-dependent nuclear translocation in Huh7 cells. Induced expression of exogenous LIN28B in a tet-off cell line promoted cancer cell proliferation.

LIN28B Antibody (C-term) - References

Guo,Y., Gene 384, 51-61 (2006)

LIN28B Antibody (C-term) - Citations

- [Enforced expression of Lin28b leads to impaired T-cell development, release of inflammatory cytokines, and peripheral T-cell lymphoma.](#)