

CDR2 Antibody (C-term)
Affinity Purified Rabbit Polyclonal Antibody (Pab)
Catalog # AP14854b

Specification

CDR2 Antibody (C-term) - Product Information

Application	WB, IHC-P,E
Primary Accession	Q01850
Other Accession	NP_001793.1
Reactivity	Human
Host	Rabbit
Clonality	Polyclonal
Isotype	Rabbit IgG
Calculated MW	51855
Antigen Region	420-448

CDR2 Antibody (C-term) - Additional Information

Gene ID 1039

Other Names

Cerebellar degeneration-related protein 2, Major Yo paraneoplastic antigen, Paraneoplastic cerebellar degeneration-associated antigen, CDR2, PCD17

Target/Specificity

This CDR2 antibody is generated from rabbits immunized with a KLH conjugated synthetic peptide between 420-448 amino acids from the C-terminal region of human CDR2.

Dilution

WB~~1:1000
IHC-P~~1:10~50

Format

Purified polyclonal antibody supplied in PBS with 0.09% (W/V) sodium azide. This antibody is purified through a protein A column, followed by peptide affinity purification.

Storage

Maintain refrigerated at 2-8°C for up to 2 weeks. For long term storage store at -20°C in small aliquots to prevent freeze-thaw cycles.

Precautions

CDR2 Antibody (C-term) is for research use only and not for use in diagnostic or therapeutic procedures.

CDR2 Antibody (C-term) - Protein Information

Name CDR2

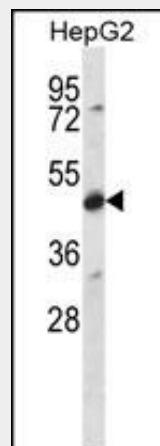
Synonyms PCD17

CDR2 Antibody (C-term) - Protocols

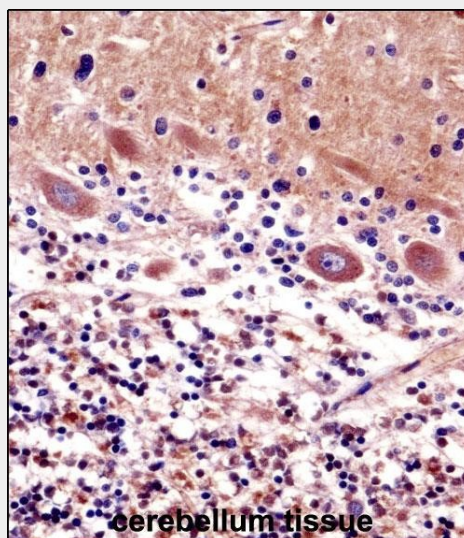
Provided below are standard protocols that you may find useful for product applications.

- [Western Blot](#)
- [Blocking Peptides](#)
- [Dot Blot](#)
- [Immunohistochemistry](#)
- [Immunofluorescence](#)
- [Immunoprecipitation](#)
- [Flow Cytometry](#)
- [Cell Culture](#)

CDR2 Antibody (C-term) - Images



CDR2 Antibody (C-term) (Cat. #AP14854b) western blot analysis in HepG2 cell line lysates (35ug/lane). This demonstrates the CDR2 antibody detected the CDR2 protein (arrow).



CDR2 Antibody (C-term) (AP14854b) immunohistochemistry analysis in formalin fixed and paraffin embedded human cerebellum tissue followed by peroxidase conjugation of the secondary

antibody and DAB staining. This data demonstrates the use of CDR2 Antibody (C-term) for immunohistochemistry. Clinical relevance has not been evaluated.

CDR2 Antibody (C-term) - References

- Rose, J.E., et al. Mol. Med. 16 (7-8), 247-253 (2010) :
Balamurugan, K., et al. Oncogene 28(37):3274-3285(2009)
Balbo, M., et al. FEMS Microbiol. Lett. 249(2):359-366(2005)
Sutton, I.J., et al. J. Neuroimmunol. 150 (1-2), 98-106 (2004) :
Sakai, K., et al. Mol. Cell. Neurosci. 19(4):477-484(2002)