

**HBEGF Antibody (Center)**  
**Affinity Purified Rabbit Polyclonal Antibody (Pab)**  
**Catalog # AP14829c**

**Specification**

---

**HBEGF Antibody (Center) - Product Information**

Application	WB,E
Primary Accession	<a href="#">O99075</a>
Other Accession	<a href="#">NP_001936.1</a>
Reactivity	Human
Host	Rabbit
Clonality	Polyclonal
Isotype	Rabbit IgG
Calculated MW	23067
Antigen Region	68-96

**HBEGF Antibody (Center) - Additional Information**

**Gene ID** 1839

**Other Names**

Proheparin-binding EGF-like growth factor, Heparin-binding EGF-like growth factor, HB-EGF, HBEGF, Diphtheria toxin receptor, DT-R, HBEGF, DTR, DTS, HEGFL

**Target/Specificity**

This HBEGF antibody is generated from rabbits immunized with a KLH conjugated synthetic peptide between 68-96 amino acids from the Central region of human HBEGF.

**Dilution**

WB~~1:1000

**Format**

Purified polyclonal antibody supplied in PBS with 0.09% (W/V) sodium azide. This antibody is purified through a protein A column, followed by peptide affinity purification.

**Storage**

Maintain refrigerated at 2-8°C for up to 2 weeks. For long term storage store at -20°C in small aliquots to prevent freeze-thaw cycles.

**Precautions**

HBEGF Antibody (Center) is for research use only and not for use in diagnostic or therapeutic procedures.

**HBEGF Antibody (Center) - Protein Information**

**Name** HBEGF

**Synonyms** DTR, DTS, HEGFL

**Function** Growth factor that mediates its effects via EGFR, ERBB2 and ERBB4. Required for normal cardiac valve formation and normal heart function. Promotes smooth muscle cell proliferation. May be involved in macrophage-mediated cellular proliferation. It is mitogenic for fibroblasts, but not endothelial cells. It is able to bind EGF receptor/EGFR with higher affinity than EGF itself and is a far more potent mitogen for smooth muscle cells than EGF. Also acts as a diphtheria toxin receptor.

#### Cellular Location

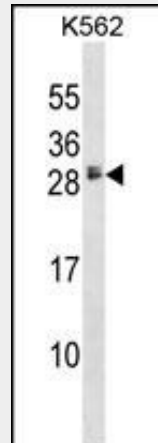
[Heparin-binding EGF-like growth factor]: Secreted, extracellular space. Note=Mature HB-EGF is released into the extracellular space and probably binds to a receptor

### HBEGF Antibody (Center) - Protocols

Provided below are standard protocols that you may find useful for product applications.

- [Western Blot](#)
- [Blocking Peptides](#)
- [Dot Blot](#)
- [Immunohistochemistry](#)
- [Immunofluorescence](#)
- [Immunoprecipitation](#)
- [Flow Cytometry](#)
- [Cell Culture](#)

### HBEGF Antibody (Center) - Images



HBEGF Antibody (Center) (Cat. #AP14829c) western blot analysis in K562 cell line lysates (35ug/lane). This demonstrates the HBEGF antibody detected the HBEGF protein (arrow).

### HBEGF Antibody (Center) - Background

HBEGF may be involved in macrophage-mediated cellular proliferation. It is mitogenic for fibroblasts and smooth muscle but not endothelial cells. It is able to bind EGF receptors with higher affinity than EGF itself and is a far more potent mitogen for smooth muscle cells than EGF. Also acts as a diphtheria toxin receptor.

### HBEGF Antibody (Center) - References

Bailey, S.D., et al. Diabetes Care 33(10):2250-2253(2010)  
Rahman, F.B., et al. Lab. Invest. 90(7):1033-1048(2010)

Hamaoka, M., et al. J. Biochem. 148(1):55-69(2010)  
Smirnova, I.S., et al. Tsitologiiia 52(5):357-363(2010)  
Yokoyama, K., et al. Nephron Clin Pract 115 (4), C237-C243 (2010) :