

CXCL11 Antibody (C-term)
Affinity Purified Rabbit Polyclonal Antibody (Pab)
Catalog # AP14816b

Specification

CXCL11 Antibody (C-term) - Product Information

Application	WB,E
Primary Accession	O14625
Other Accession	NP_005400.1
Reactivity	Human
Host	Rabbit
Clonality	Polyclonal
Isotype	Rabbit IgG
Calculated MW	10365
Antigen Region	64-93

CXCL11 Antibody (C-term) - Additional Information

Gene ID 6373

Other Names

C-X-C motif chemokine 11, Beta-R1, H174, Interferon gamma-inducible protein 9, IP-9, Interferon-inducible T-cell alpha chemoattractant, I-TAC, Small-inducible cytokine B11, CXCL11, ITAC, SCYB11, SCYB9B

Target/Specificity

This CXCL11 antibody is generated from rabbits immunized with a KLH conjugated synthetic peptide between 64-93 amino acids from the C-terminal region of human CXCL11.

Dilution

WB~~1:1000

Format

Purified polyclonal antibody supplied in PBS with 0.09% (W/V) sodium azide. This antibody is purified through a protein A column, followed by peptide affinity purification.

Storage

Maintain refrigerated at 2-8°C for up to 2 weeks. For long term storage store at -20°C in small aliquots to prevent freeze-thaw cycles.

Precautions

CXCL11 Antibody (C-term) is for research use only and not for use in diagnostic or therapeutic procedures.

CXCL11 Antibody (C-term) - Protein Information

Name CXCL11

Synonyms ITAC, SCYB11, SCYB9B

Function Chemotactic for interleukin-activated T-cells but not unstimulated T-cells, neutrophils or monocytes. Induces calcium release in activated T-cells. Binds to CXCR3. May play an important role in CNS diseases which involve T-cell recruitment. May play a role in skin immune responses.

Cellular Location

Secreted.

Tissue Location

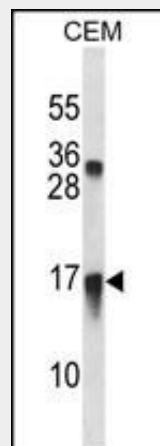
High levels in peripheral blood leukocytes, pancreas and liver astrocytes. Moderate levels in thymus, spleen and lung. Low levels in placenta, prostate and small intestine. Also found in epidermal basal layer keratinocytes in skin disorders

CXCL11 Antibody (C-term) - Protocols

Provided below are standard protocols that you may find useful for product applications.

- [Western Blot](#)
- [Blocking Peptides](#)
- [Dot Blot](#)
- [Immunohistochemistry](#)
- [Immunofluorescence](#)
- [Immunoprecipitation](#)
- [Flow Cytometry](#)
- [Cell Culture](#)

CXCL11 Antibody (C-term) - Images



CXCL11 Antibody (C-term) (Cat. #AP14816b) western blot analysis in CEM cell line lysates (35ug/lane). This demonstrates the CXCL11 antibody detected the CXCL11 protein (arrow).

CXCL11 Antibody (C-term) - Background

Chemokines are a group of small (approximately 8 to 14 kD), mostly basic, structurally related molecules that regulate cell trafficking of various types of leukocytes through interactions with a subset of 7-transmembrane, G protein-coupled receptors. Chemokines also play fundamental roles in the development, homeostasis, and function of the immune system, and

they have effects on cells of the central nervous system as well as on endothelial cells involved in angiogenesis or angiostasis. Chemokines are divided into 2 major subfamilies, CXC and CC. This gene is a CXC member of the chemokine superfamily. Its encoded protein induces a chemotactic response in activated T-cells and is the dominant ligand for CXC receptor-3. The gene encoding this protein contains 4 exons and at least three polyadenylation signals which might reflect cell-specific regulation of expression. IFN-gamma is a potent inducer of transcription of this gene.

CXCL11 Antibody (C-term) - References

- Rot, A. Front. Biosci. 15, 645-660 (2010) :
- Luttrell, L.M. Mol. Biotechnol. 39(3):239-264(2008)
- Kouroumalis, A., et al. J. Immunol. 175(8):5403-5411(2005)
- Booth, V., et al. Protein Sci. 13(8):2022-2028(2004)
- Colvin, R.A., et al. J. Biol. Chem. 279(29):30219-30227(2004)