

PTX3 Antibody (Center)
Affinity Purified Rabbit Polyclonal Antibody (Pab)
Catalog # AP14812c

Specification

PTX3 Antibody (Center) - Product Information

Application	WB,E
Primary Accession	P26022
Other Accession	NP_002843.2
Reactivity	Human
Host	Rabbit
Clonality	Polyclonal
Isotype	Rabbit IgG
Calculated MW	41976
Antigen Region	120-148

PTX3 Antibody (Center) - Additional Information

Gene ID 5806

Other Names

Pentraxin-related protein PTX3, Pentaxin-related protein PTX3, Tumor necrosis factor alpha-induced protein 5, TNF alpha-induced protein 5, Tumor necrosis factor-inducible gene 14 protein, TSG-14, PTX3, TNFAIP5, TSG14

Target/Specificity

This PTX3 antibody is generated from rabbits immunized with a KLH conjugated synthetic peptide between 120-148 amino acids from the Central region of human PTX3.

Dilution

WB~~1:1000

Format

Purified polyclonal antibody supplied in PBS with 0.09% (W/V) sodium azide. This antibody is purified through a protein A column, followed by peptide affinity purification.

Storage

Maintain refrigerated at 2-8°C for up to 2 weeks. For long term storage store at -20°C in small aliquots to prevent freeze-thaw cycles.

Precautions

PTX3 Antibody (Center) is for research use only and not for use in diagnostic or therapeutic procedures.

PTX3 Antibody (Center) - Protein Information

Name PTX3 ([HGNC:9692](#))

Synonyms TNFAIP5, TSG14

Function Plays a role in the regulation of innate resistance to pathogens, inflammatory reactions, possibly clearance of self- components and female fertility.

Cellular Location

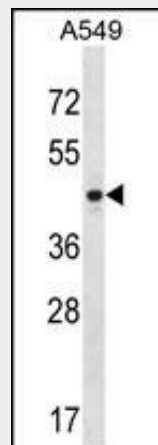
Secreted.

PTX3 Antibody (Center) - Protocols

Provided below are standard protocols that you may find useful for product applications.

- [Western Blot](#)
- [Blocking Peptides](#)
- [Dot Blot](#)
- [Immunohistochemistry](#)
- [Immunofluorescence](#)
- [Immunoprecipitation](#)
- [Flow Cytometry](#)
- [Cell Culture](#)

PTX3 Antibody (Center) - Images



PTX3 Antibody (Center) (Cat. #AP14812c) western blot analysis in A549 cell line lysates (35ug/lane). This demonstrates the PTX3 antibody detected the PTX3 protein (arrow).

PTX3 Antibody (Center) - Background

PTX3 plays a role in the regulation of innate resistance to pathogens, inflammatory reactions, possibly clearance of self-components and female fertility (By similarity).

PTX3 Antibody (Center) - References

- Bailey, S.D., et al. Diabetes Care 33(10):2250-2253(2010)
Yilmaz, M.I., et al. Clin J Am Soc Nephrol 5(7):1174-1181(2010)
Haverkamp, M.H., et al. Int. J. Pediatr. Otorhinolaryngol. 74(7):752-754(2010)
Hollan, I., et al. Arthritis Care Res (Hoboken) 62(3):378-385(2010)
Sciacca, P., et al. Front Biosci (Elite Ed) 2, 805-809 (2010) :