

**PJA1 Antibody (N-term)**  
**Affinity Purified Rabbit Polyclonal Antibody (Pab)**  
**Catalog # AP14811A**

**Specification**

---

**PJA1 Antibody (N-term) - Product Information**

Application	<b>WB, IHC-P,E</b>
Primary Accession	<a href="#">O8NG27</a>
Other Accession	<a href="#">NP_071763.2</a> , <a href="#">NP_660095.1</a>
Reactivity	<b>Human</b>
Host	<b>Rabbit</b>
Clonality	<b>Polyclonal</b>
Isotype	<b>Rabbit IgG</b>
Calculated MW	<b>71002</b>
Antigen Region	<b>155-183</b>

**PJA1 Antibody (N-term) - Additional Information**

**Gene ID** 64219

**Other Names**

E3 ubiquitin-protein ligase Praja-1, Praja1, 632-, RING finger protein 70, PJA1, RNF70

**Target/Specificity**

This PJA1 antibody is generated from rabbits immunized with a KLH conjugated synthetic peptide between 155-183 amino acids from the N-terminal region of human PJA1.

**Dilution**

WB~~1:1000  
IHC-P~~1:10~50

**Format**

Purified polyclonal antibody supplied in PBS with 0.09% (W/V) sodium azide. This antibody is purified through a protein A column, followed by peptide affinity purification.

**Storage**

Maintain refrigerated at 2-8°C for up to 2 weeks. For long term storage store at -20°C in small aliquots to prevent freeze-thaw cycles.

**Precautions**

PJA1 Antibody (N-term) is for research use only and not for use in diagnostic or therapeutic procedures.

**PJA1 Antibody (N-term) - Protein Information**

**Name** PJA1

**Synonyms** RNF70

**Function** Has E2-dependent E3 ubiquitin-protein ligase activity. Ubiquitinates MAGED1 antigen leading to its subsequent degradation by proteasome (By similarity). May be involved in protein sorting.

**Tissue Location**

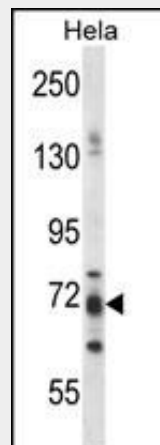
Expressed in various regions of the brain including the cerebellum, cerebral cortex, medulla, occipital pole, frontal lobe, temporal lobe and putamen. Highest levels in the cerebral cortex

**PJA1 Antibody (N-term) - Protocols**

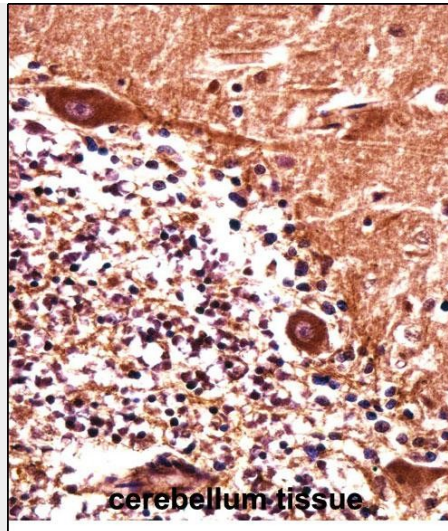
Provided below are standard protocols that you may find useful for product applications.

- [Western Blot](#)
- [Blocking Peptides](#)
- [Dot Blot](#)
- [Immunohistochemistry](#)
- [Immunofluorescence](#)
- [Immunoprecipitation](#)
- [Flow Cytometry](#)
- [Cell Culture](#)

**PJA1 Antibody (N-term) - Images**



PJA1 Antibody (N-term) (Cat. #AP14811a) western blot analysis in HeLa cell line lysates (35ug/lane). This demonstrates the PJA1 antibody detected the PJA1 protein (arrow).



PJA1 Antibody (N-term) (AP14811a) immunohistochemistry analysis in formalin fixed and paraffin embedded human cerebellum tissue followed by peroxidase conjugation of the secondary antibody and DAB staining. This data demonstrates the use of PJA1 Antibody (N-term) for immunohistochemistry. Clinical relevance has not been evaluated.

#### **PJA1 Antibody (N-term) - Background**

This gene encodes an enzyme that has E2-dependent E3 ubiquitin-protein ligase activity. This enzyme belongs to a class of ubiquitin ligases that include a RING finger motif, and it can interact with the E2 ubiquitin-conjugating enzyme Ubch5B. This gene is located in an area of chromosome X where several X-linked mental retardation disorders have been associated, and it has also been found as part of a contiguous gene deletion associated with craniofrontonasal syndrome, though a direct link to any disorder has yet to be demonstrated. Alternative splicing results in multiple transcript variants.

#### **PJA1 Antibody (N-term) - References**

- Wieland, I., et al. Clin. Genet. 72(6):506-516(2007)
- Saha, T., et al. Oncogene 25(5):693-705(2006)
- Mishra, L., et al. Cancer Biol. Ther. 4(7):694-699(2005)
- Sasaki, A., et al. J. Biol. Chem. 277(25):22541-22546(2002)
- Yu, P., et al. Genomics 79(6):869-874(2002)