

**Alkaline Phosphatase (ALPI) Antibody (Center)**  
**Purified Rabbit Polyclonal Antibody (Pab)**  
**Catalog # AP1480c**

**Specification**

---

**Alkaline Phosphatase (ALPI) Antibody (Center) - Product Information**

Application	IF, WB, IHC-P,E
Primary Accession	<a href="#">P09923</a>
Reactivity	Human
Host	Rabbit
Clonality	Polyclonal
Isotype	Rabbit IgG
Antigen Region	274-304

**Alkaline Phosphatase (ALPI) Antibody (Center) - Additional Information**

**Gene ID** 248

**Other Names**

Intestinal-type alkaline phosphatase, IAP, Intestinal alkaline phosphatase, ALPI

**Target/Specificity**

This Alkaline Phosphatase (ALPI) antibody is generated from rabbits immunized with a KLH conjugated synthetic peptide between 274-304 amino acids from the Central region of human Alkaline Phosphatase (ALPI).

**Dilution**

IF~~1:100  
WB~~1:1000  
IHC-P~~1:100

**Format**

Purified polyclonal antibody supplied in PBS with 0.09% (W/V) sodium azide. This antibody is purified through a protein A column, followed by peptide affinity purification.

**Storage**

Maintain refrigerated at 2-8°C for up to 2 weeks. For long term storage store at -20°C in small aliquots to prevent freeze-thaw cycles.

**Precautions**

Alkaline Phosphatase (ALPI) Antibody (Center) is for research use only and not for use in diagnostic or therapeutic procedures.

**Alkaline Phosphatase (ALPI) Antibody (Center) - Protein Information**

**Name** ALPI

**Function** Alkaline phosphatase that can hydrolyze various phosphate compounds.

### Cellular Location

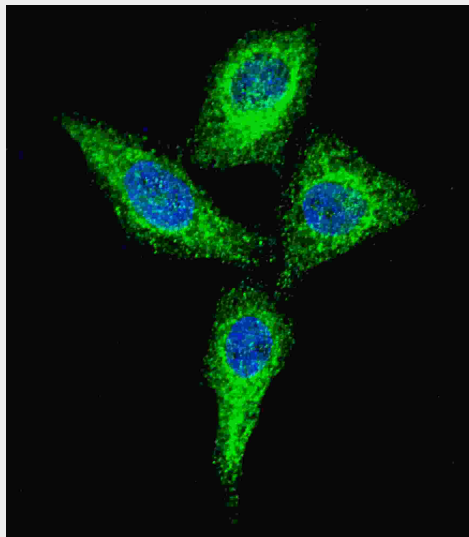
Cell membrane {ECO:0000250|UniProtKB:P15693}; Lipid-anchor, GPI-anchor {ECO:0000250|UniProtKB:P15693}

### Alkaline Phosphatase (ALPI) Antibody (Center) - Protocols

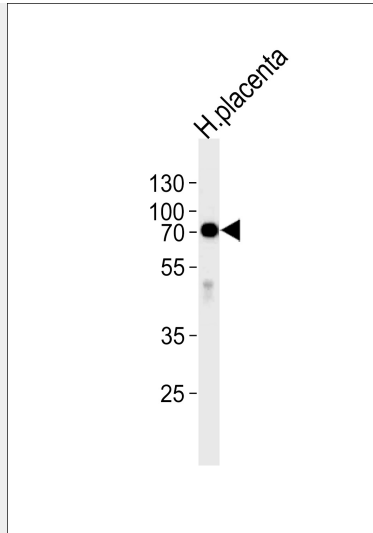
Provided below are standard protocols that you may find useful for product applications.

- [Western Blot](#)
- [Blocking Peptides](#)
- [Dot Blot](#)
- [Immunohistochemistry](#)
- [Immunofluorescence](#)
- [Immunoprecipitation](#)
- [Flow Cytometry](#)
- [Cell Culture](#)

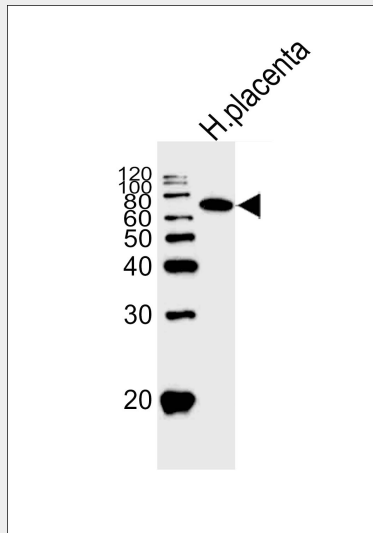
### Alkaline Phosphatase (ALPI) Antibody (Center) - Images



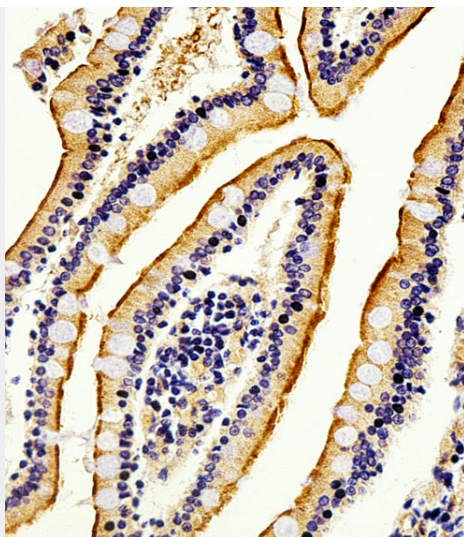
Fluorescent confocal image of HeLa cells stained with Alkaline Phosphatase (ALPI) (Center) antibody. HeLa cells were fixed with 4% PFA (20 min), permeabilized with Triton X-100 (0.2%, 30 min). Cells were then incubated with AP1480c Alkaline Phosphatase (ALPI) (Center) primary antibody (1:100, 2 h at room temperature). For secondary antibody, Alexa Fluor® 488 conjugated donkey anti-rabbit antibody (green) was used (1:1000, 1h). Nuclei were counterstained with Hoechst 33342 (blue) (10 µg/ml, 5 min). Alkaline Phosphatase (ALPI) immunoreactivity is localized to the cytoplasm of HeLa cells.



Western blot analysis of lysate from human placenta tissue, using ALPI Antibody (Center)(Cat. #AP1480c). AP1480c was diluted at 1:1000 at each lane. A goat anti-rabbit IgG H&L(HRP) at 1:5000 dilution was used as the secondary antibody. Lysate at 35ug per lane.



Western blot analysis of lysate from human placenta tissue lysate, using ALPI Antibody (Center)(Cat. #AP1480c). AP1480c was diluted at 1:1000. A goat anti-rabbit IgG H&L(HRP) at 1:10000 dilution was used as the secondary antibody. Lysate at 20ug.



Immunohistochemical analysis of paraffin-embedded H. small intestine section using Alkaline Phosphatase (ALPI) Antibody(Center) (Cat#AP1480c). AP1480c was diluted at 1:100 dilution. A peroxidase-conjugated goat anti-rabbit IgG at 1:400 dilution was used as the secondary antibody, followed by DAB staining.

#### **Alkaline Phosphatase (ALPI) Antibody (Center) - Background**

There are at least four distinct but related alkaline phosphatases: intestinal, placental, placental-like, and liver/bone/kidney (tissue non-specific). The intestinal alkaline phosphatase gene encodes a digestive brush-border enzyme. This enzyme is upregulated during small intestinal epithelial cell differentiation.

#### **Alkaline Phosphatase (ALPI) Antibody (Center) - References**

References for protein:

- 1.Torres,M.I., Pathol. Res. Pract. 203 (6), 485-487 (2007)
- 2.Olsen,L., Am. J. Physiol. Gastrointest. Liver Physiol. 289 (2), G220-G226(2005)
- 3.Alkhoury,F., Am. J. Physiol. Gastrointest. Liver Physiol. 289 (2), G285-G290(2005)

References for HeLa cell line:

1. Scherer WF, Syverton JT, Gey GO (May 1953). "Studies on the propagation in vitro of poliomyelitis viruses. IV. Viral multiplication in a stable strain of human malignant epithelial cells (strain HeLa) derived from an epidermoid carcinoma of the cervix". J. Exp. Med. 97 (5): 695-710. [PubMed:13052828].
2. Macville M, Schröck E, Padilla-Nash H, Keck C, Ghadimi BM, Zimonjic D, Popescu N, Ried T (January 1999). "Comprehensive and definitive molecular cytogenetic characterization of HeLa cells by spectral karyotyping". Cancer Res. 59 (1): 141-50. [PubMed: 9892199].
3. Rahbari R, Sheahan T, Modes V, Collier P, Macfarlane C, Badge RM (April 2009). "A novel L1 retrotransposon marker for HeLa cell line identification". BioTechniques 46 (4): 277-84. [PubMed: 19450234].
4. Capes-Davis A, Theodosopoulos G, Atkin I, Drexler HG, Kohara A, MacLeod RA, Masters JR, Nakamura Y, Reid YA, Reddel RR, Freshney RI (July 2010). "Check your cultures! A list of cross-contaminated or misidentified cell lines". Int. J. Cancer 127 (1): 1-8. [PubMed:20143388].

#### **Alkaline Phosphatase (ALPI) Antibody (Center) - Citations**

- [Growth differentiation factor 9 concentration in the follicular fluid of infertile women with endometriosis.](#)

