

UBE2D2 Antibody (C-term)
Affinity Purified Rabbit Polyclonal Antibody (Pab)
Catalog # AP14752b

Specification

UBE2D2 Antibody (C-term) - Product Information

Application	WB,E
Primary Accession	P62837
Other Accession	P62840 , P62839 , P62838 , Q1RMX2 , NP_003330.1 , NP_862821.1
Reactivity	Human
Predicted	Bovine, Mouse, Rat, Xenopus
Host	Rabbit
Clonality	Polyclonal
Isotype	Rabbit IgG
Antigen Region	112-140

UBE2D2 Antibody (C-term) - Additional Information

Gene ID 7322

Other Names

Ubiquitin-conjugating enzyme E2 D2, Ubiquitin carrier protein D2, Ubiquitin-conjugating enzyme E2(17)KB 2, Ubiquitin-conjugating enzyme E2-17 kDa 2, Ubiquitin-protein ligase D2, p53-regulated ubiquitin-conjugating enzyme 1, UBE2D2, PUBC1, UBC4, UBC5B, UBCH4, UBCH5B

Target/Specificity

This UBE2D2 antibody is generated from rabbits immunized with a KLH conjugated synthetic peptide between 112-140 amino acids from the C-terminal region of human UBE2D2.

Dilution

WB~~1:1000

Format

Purified polyclonal antibody supplied in PBS with 0.09% (W/V) sodium azide. This antibody is purified through a protein A column, followed by peptide affinity purification.

Storage

Maintain refrigerated at 2-8°C for up to 2 weeks. For long term storage store at -20°C in small aliquots to prevent freeze-thaw cycles.

Precautions

UBE2D2 Antibody (C-term) is for research use only and not for use in diagnostic or therapeutic procedures.

UBE2D2 Antibody (C-term) - Protein Information

Name UBE2D2

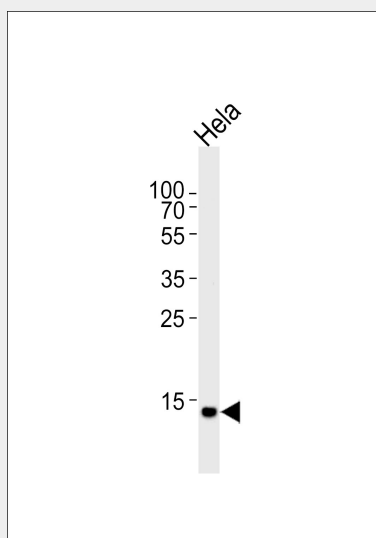
Synonyms PUBC1, UBC4, UBC5B, UBCH4, UBCH5B

Function Accepts ubiquitin from the E1 complex and catalyzes its covalent attachment to other proteins (PubMed:[10329681](#), PubMed:[18042044](#), PubMed:[18703417](#), PubMed:[20061386](#), PubMed:[20403326](#), PubMed:[20525694](#), PubMed:[26475854](#), PubMed:[28322253](#)). Catalyzes 'Lys-48'- linked polyubiquitination (PubMed:[10329681](#), PubMed:[18042044](#), PubMed:[18359941](#), PubMed:[18703417](#), PubMed:[20061386](#), PubMed:[20403326](#), PubMed:[20525694](#), PubMed:[26475854](#)). Mediates the selective degradation of short-lived and abnormal proteins (PubMed:[10329681](#), PubMed:[18042044](#), PubMed:[18359941](#), PubMed:[18703417](#), PubMed:[20061386](#), PubMed:[20403326](#), PubMed:[20525694](#), PubMed:[26475854](#)). Functions in the E6/E6-AP-induced ubiquitination of p53/TP53 (PubMed:[15280377](#)). Mediates ubiquitination of PEX5 and SQSTM1 and autoubiquitination of STUB1 and TRAF6 (PubMed:[18359941](#), PubMed:[28322253](#)). Involved in the signal-induced conjugation and subsequent degradation of NFKBIA, FBXW2-mediated GCM1 ubiquitination and degradation, MDM2-dependent degradation of p53/TP53 and the activation of MAVS in the mitochondria by RIGI in response to viral infection (PubMed:[18703417](#), PubMed:[20403326](#)). Essential for viral activation of IRF3 (PubMed:[19854139](#)).

UBE2D2 Antibody (C-term) - Protocols

Provided below are standard protocols that you may find useful for product applications.

- [Western Blot](#)
- [Blocking Peptides](#)
- [Dot Blot](#)
- [Immunohistochemistry](#)
- [Immunofluorescence](#)
- [Immunoprecipitation](#)
- [Flow Cytometry](#)
- [Cell Culture](#)

UBE2D2 Antibody (C-term) - Images

Western blot analysis of lysate from HeLa cell line, using UBE2D2 Antibody (C-term)(Cat. #AP14752b). AP14752b was diluted at 1:1000 at each lane. A goat anti-rabbit IgG H&L(HRP) at 1:5000 dilution was used as the secondary antibody. Lysate at 35ug per lane.

UBE2D2 Antibody (C-term) - Background

The modification of proteins with ubiquitin is an important cellular mechanism for targeting abnormal or short-lived proteins for degradation. Ubiquitination involves at least three classes of enzymes: ubiquitin-activating enzymes, or E1s, ubiquitin-conjugating enzymes, or E2s, and ubiquitin-protein ligases, or E3s. This gene encodes a member of the E2 ubiquitin-conjugating enzyme family. This enzyme functions in the ubiquitination of the tumor-suppressor protein p53, which is induced by an E3 ubiquitin-protein ligase. Two alternatively spliced transcript variants have been found for this gene and they encode distinct isoforms.

UBE2D2 Antibody (C-term) - References

Bailey, S.D., et al. Diabetes Care 33(10):2250-2253(2010)
Wu, K., et al. Mol. Cell 37(6):784-796(2010)
Vina-Vilaseca, A., et al. J. Biol. Chem. 285(10):7645-7656(2010)
Sakata, E., et al. Structure 18(1):138-147(2010)
Kamadurai, H.B., et al. Mol. Cell 36(6):1095-1102(2009)