

**PTGES3 Antibody (Center)**  
**Affinity Purified Rabbit Polyclonal Antibody (Pab)**  
**Catalog # AP14751c**

**Specification**

---

**PTGES3 Antibody (Center) - Product Information**

Application	WB,E
Primary Accession	<a href="#">Q15185</a>
Other Accession	<a href="#">P83868</a> , <a href="#">Q9R0Q7</a> , <a href="#">Q6PWL5</a> , <a href="#">Q3ZBF7</a> , <a href="#">NP_006592.3</a> , <a href="#">G1TGF1</a>
Reactivity	Human, Mouse, Rat
Predicted	Bovine, Monkey, Rabbit
Host	Rabbit
Clonality	Polyclonal
Isotype	Rabbit IgG
Antigen Region	45-73

**PTGES3 Antibody (Center) - Additional Information**

**Gene ID** 10728

**Other Names**

Prostaglandin E synthase 3, Cytosolic prostaglandin E2 synthase, cPGES, Hsp90 co-chaperone, Progesterone receptor complex p23, Telomerase-binding protein p23, PTGES3, P23, TEBP

**Target/Specificity**

This PTGES3 antibody is generated from rabbits immunized with a KLH conjugated synthetic peptide between 45-73 amino acids from the Central region of human PTGES3.

**Dilution**

WB~~1:2000

**Format**

Purified polyclonal antibody supplied in PBS with 0.09% (W/V) sodium azide. This antibody is purified through a protein A column, followed by peptide affinity purification.

**Storage**

Maintain refrigerated at 2-8°C for up to 2 weeks. For long term storage store at -20°C in small aliquots to prevent freeze-thaw cycles.

**Precautions**

PTGES3 Antibody (Center) is for research use only and not for use in diagnostic or therapeutic procedures.

**PTGES3 Antibody (Center) - Protein Information**

**Name** PTGES3

### Synonyms P23, TEBP

**Function** Cytosolic prostaglandin synthase that catalyzes the oxidoreduction of prostaglandin endoperoxide H2 (PGH2) to prostaglandin E2 (PGE2) (PubMed:[10922363](#)). Molecular chaperone that localizes to genomic response elements in a hormone-dependent manner and disrupts receptor-mediated transcriptional activation, by promoting disassembly of transcriptional regulatory complexes (PubMed:[11274138](#), PubMed:[12077419](#)). Facilitates HIF alpha proteins hydroxylation via interaction with EGLN1/PHD2, leading to recruit EGLN1/PHD2 to the HSP90 pathway (PubMed:[24711448](#)).

### Cellular Location

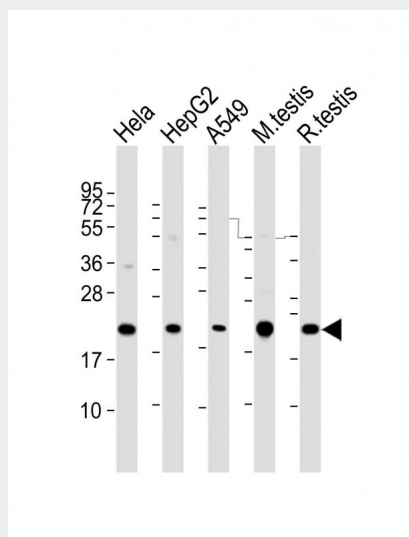
Cytoplasm {ECO:0000250|UniProtKB:Q3ZBF7}.

### PTGES3 Antibody (Center) - Protocols

Provided below are standard protocols that you may find useful for product applications.

- [Western Blot](#)
- [Blocking Peptides](#)
- [Dot Blot](#)
- [Immunohistochemistry](#)
- [Immunofluorescence](#)
- [Immunoprecipitation](#)
- [Flow Cytometry](#)
- [Cell Culture](#)

### PTGES3 Antibody (Center) - Images



All lanes : Anti-PTGES3 Antibody (Center) at 1:2000 dilution Lane 1: HeLa whole cell lysate Lane 2: HepG2 whole cell lysate Lane 3: A549 whole cell lysate Lane 4: mouse testis lysate Lane 5: rat testis lysate Lysates/proteins at 20 µg per lane. Secondary Goat Anti-Rabbit IgG, (H+L), Peroxidase conjugated at 1/10000 dilution. Predicted band size : 19 kDa Blocking/Dilution buffer: 5% NFD/MTBST.

### PTGES3 Antibody (Center) - Background

Molecular chaperone that localizes to genomic response elements in a hormone-dependent

manner and disrupts receptor-mediated transcriptional activation, by promoting disassembly of transcriptional regulatory complexes.

#### **PTGES3 Antibody (Center) - References**

Chen, W., et al. Proc. Natl. Acad. Sci. U.S.A. 107(16):7401-7406(2010)

Lee, J.H., et al. Cancer Lett. 290(1):76-86(2010)

Chadli, A., et al. J. Biol. Chem. 285(6):4224-4231(2010)

Woo, S.H., et al. J. Biol. Chem. 284(45):30871-30880(2009)

Mattila, S., et al. Neuropathology 29(2):156-165(2009)