

**ALDH5A1 Antibody (C-term)**  
**Affinity Purified Rabbit Polyclonal Antibody (Pab)**  
**Catalog # AP1472b**

**Specification**

---

**ALDH5A1 Antibody (C-term) - Product Information**

Application	<b>WB, IHC-P,E</b>
Primary Accession	<a href="#">P51649</a>
Other Accession	<a href="#">Q8BWF0</a>
Reactivity	<b>Human</b>
Predicted	<b>Mouse</b>
Host	<b>Rabbit</b>
Clonality	<b>Polyclonal</b>
Isotype	<b>Rabbit IgG</b>
Calculated MW	<b>57215</b>
Antigen Region	<b>368-398</b>

**ALDH5A1 Antibody (C-term) - Additional Information**

**Gene ID** 7915

**Other Names**

Succinate-semialdehyde dehydrogenase, mitochondrial, Aldehyde dehydrogenase family 5 member A1, NAD(+)-dependent succinic semialdehyde dehydrogenase, ALDH5A1, SSADH

**Target/Specificity**

This ALDH5A1 antibody is generated from rabbits immunized with a KLH conjugated synthetic peptide between 368-398 amino acids from the C-terminal region of human ALDH5A1.

**Dilution**

WB~~1:1000  
IHC-P~~1:10~50

**Format**

Purified polyclonal antibody supplied in PBS with 0.09% (W/V) sodium azide. This antibody is purified through a protein A column, followed by peptide affinity purification.

**Storage**

Maintain refrigerated at 2-8°C for up to 2 weeks. For long term storage store at -20°C in small aliquots to prevent freeze-thaw cycles.

**Precautions**

ALDH5A1 Antibody (C-term) is for research use only and not for use in diagnostic or therapeutic procedures.

**ALDH5A1 Antibody (C-term) - Protein Information**

**Name** ALDH5A1 ([HGNC:408](#))

### Synonyms SSADH

**Function** Catalyzes one step in the degradation of the inhibitory neurotransmitter gamma-aminobutyric acid (GABA).

### Cellular Location

Mitochondrion.

### Tissue Location

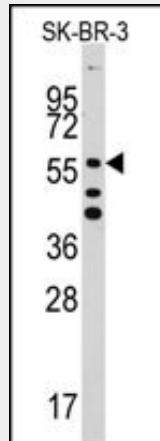
Brain, pancreas, heart, liver, skeletal muscle and kidney. Lower in placenta

## ALDH5A1 Antibody (C-term) - Protocols

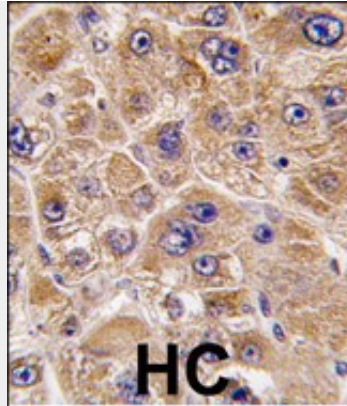
Provided below are standard protocols that you may find useful for product applications.

- [Western Blot](#)
- [Blocking Peptides](#)
- [Dot Blot](#)
- [Immunohistochemistry](#)
- [Immunofluorescence](#)
- [Immunoprecipitation](#)
- [Flow Cytometry](#)
- [Cell Culture](#)

## ALDH5A1 Antibody (C-term) - Images



Western blot analysis of ALDH5A1 Antibody (C-term) (Cat.#AP1472b) in SK-BR-3 cell line lysates (35ug/lane). ALDH5A1 (arrow) was detected using the purified Pab.



Formalin-fixed and paraffin-embedded human hepatocarcinoma tissue reacted with \*ALDH5A1 antibody (C-term), which was peroxidase-conjugated to the secondary antibody, followed by DAB staining. This data demonstrates the use of this antibody for immunohistochemistry; clinical relevance has not been evaluated.

#### **ALDH5A1 Antibody (C-term) - Background**

ALDH5A1 belongs to the aldehyde dehydrogenase family of proteins. This protein functions as a mitochondrial NAD(+)-dependent succinic semialdehyde dehydrogenase. A deficiency of this enzyme, known as 4-hydroxybutyricaciduria, is a rare inborn error in the metabolism of the neurotransmitter 4-aminobutyric acid (GABA). In response to the defect, physiologic fluids from patients accumulate GHB, a compound with numerous neuromodulatory properties.

#### **ALDH5A1 Antibody (C-term) - References**

- Knerr,I., J. Inherit. Metab. Dis. 30 (3), 279-294 (2007)
- Blasi,P., J. Mol. Evol. 63 (1), 54-68 (2006)
- Plomin,R., Mol. Psychiatry 9 (6), 582-586 (2004)