

**Mouse Ephb4 Antibody (Center)**  
**Affinity Purified Rabbit Polyclonal Antibody (Pab)**  
**Catalog # AP14714C**

## Specification

---

### Mouse Ephb4 Antibody (Center) - Product Information

Application	WB,E
Primary Accession	<a href="#">P54761</a>
Reactivity	Mouse
Host	Rabbit
Clonality	Polyclonal
Isotype	Rabbit IgG
Calculated MW	108848
Antigen Region	360-389

### Mouse Ephb4 Antibody (Center) - Additional Information

**Gene ID** 13846

#### Other Names

Ephrin type-B receptor 4, Developmental kinase 2, mDK-2, Hepatoma transmembrane kinase, Tyrosine kinase MYK-1, Ephb4, Htk, Mdk2, Myk1

#### Target/Specificity

This Mouse Ephb4 antibody is generated from rabbits immunized with a KLH conjugated synthetic peptide between 360-389 amino acids from the Central region of mouse Ephb4.

#### Dilution

WB~~1:1000

#### Format

Purified polyclonal antibody supplied in PBS with 0.09% (W/V) sodium azide. This antibody is purified through a protein A column, followed by peptide affinity purification.

#### Storage

Maintain refrigerated at 2-8°C for up to 2 weeks. For long term storage store at -20°C in small aliquots to prevent freeze-thaw cycles.

#### Precautions

Mouse Ephb4 Antibody (Center) is for research use only and not for use in diagnostic or therapeutic procedures.

### Mouse Ephb4 Antibody (Center) - Protein Information

**Name** Ephb4

**Synonyms** Htk, Mdk2, Myk1

**Function** Receptor tyrosine kinase which binds promiscuously transmembrane ephrin-B family ligands residing on adjacent cells, leading to contact-dependent bidirectional signaling into neighboring cells. The signaling pathway downstream of the receptor is referred to as forward signaling while the signaling pathway downstream of the ephrin ligand is referred to as reverse signaling. Together with its cognate ligand/functional ligand EFNB2 it is involved in the regulation of cell adhesion and migration, and plays a central role in heart morphogenesis, angiogenesis and blood vessel remodeling and permeability. EPHB4-mediated forward signaling controls cellular repulsion and segregation from EFNB2-expressing cells.

#### Cellular Location

Cell membrane {ECO:0000250|UniProtKB:P54760}; Single-pass type I membrane protein {ECO:0000250|UniProtKB:P54760}

#### Tissue Location

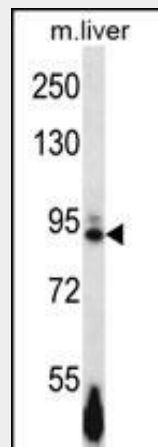
Expressed in various organ systems, including lung, liver, kidney, intestine, muscle and heart (PubMed:7478528). Expressed in myogenic progenitor cells (PubMed:27446912)

### Mouse Ephb4 Antibody (Center) - Protocols

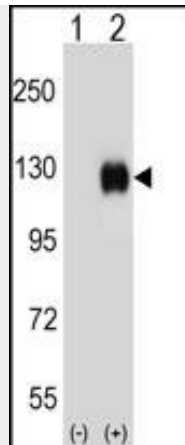
Provided below are standard protocols that you may find useful for product applications.

- [Western Blot](#)
- [Blocking Peptides](#)
- [Dot Blot](#)
- [Immunohistochemistry](#)
- [Immunofluorescence](#)
- [Immunoprecipitation](#)
- [Flow Cytometry](#)
- [Cell Culture](#)

### Mouse Ephb4 Antibody (Center) - Images



Mouse Ephb4 Antibody (Center) (Cat. #AP14714c) western blot analysis in mouse liver tissue lysates (35ug/lane). This demonstrates the Ephb4 antibody detected the Ephb4 protein (arrow).



Western blot analysis of Ephb4 (arrow) using rabbit polyclonal Mouse Ephb4 Antibody (Center) (Cat. #AP14714c). 293 cell lysates (2 ug/lane) either nontransfected (Lane 1) or transiently transfected (Lane 2) with the Ephb4 gene.

#### **Mouse Ephb4 Antibody (Center) - Background**

Receptor for members of the ephrin-B family. Binds to ephrin-B2.