

ALDH6A1 Antibody (C-term)
Affinity Purified Rabbit Polyclonal Antibody (Pab)
Catalog # AP1469B**Specification**

ALDH6A1 Antibody (C-term) - Product Information

Application	WB, IHC-P,E
Primary Accession	O02252
Other Accession	O02253
Reactivity	Human
Predicted	Rat
Host	Rabbit
Clonality	Polyclonal
Isotype	Rabbit IgG
Calculated MW	57840
Antigen Region	367-396

ALDH6A1 Antibody (C-term) - Additional Information**Gene ID** 4329**Other Names**

Methylmalonate-semialdehyde dehydrogenase [acylating], mitochondrial, MMSDH,
Malonate-semialdehyde dehydrogenase [acylating], Aldehyde dehydrogenase family 6 member
A1, ALDH6A1, MMSDH

Target/Specificity

This ALDH6A1 antibody is generated from rabbits immunized with a KLH conjugated synthetic peptide between 367-396 amino acids from the C-terminal region of human ALDH6A1.

Dilution

WB~~1:1000
IHC-P~~1:10~50

Format

Purified polyclonal antibody supplied in PBS with 0.09% (W/V) sodium azide. This antibody is purified through a protein A column, followed by peptide affinity purification.

Storage

Maintain refrigerated at 2-8°C for up to 2 weeks. For long term storage store at -20°C in small aliquots to prevent freeze-thaw cycles.

Precautions

ALDH6A1 Antibody (C-term) is for research use only and not for use in diagnostic or therapeutic procedures.

ALDH6A1 Antibody (C-term) - Protein Information

Name ALDH6A1 ([HGNC:7179](#))

Function Malonate and methylmalonate semialdehyde dehydrogenase involved in the catabolism of valine, thymine, and compounds catabolized by way of beta-alanine, including uracil and cytidine.

Cellular Location

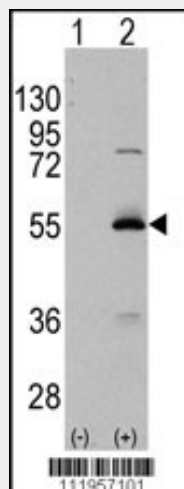
Mitochondrion.

ALDH6A1 Antibody (C-term) - Protocols

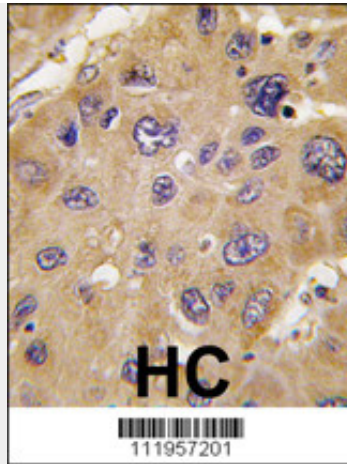
Provided below are standard protocols that you may find useful for product applications.

- [Western Blot](#)
- [Blocking Peptides](#)
- [Dot Blot](#)
- [Immunohistochemistry](#)
- [Immunofluorescence](#)
- [Immunoprecipitation](#)
- [Flow Cytometry](#)
- [Cell Culture](#)

ALDH6A1 Antibody (C-term) - Images



Western blot analysis of ALDH6A1 (arrow) using rabbit polyclonal ALDH6A1 Antibody (C-term) (RB11957). 293 cell lysates (2 ug/lane) either nontransfected (Lane 1) or transiently transfected with the ALDH6A1 gene (Lane 2) (Origene Technologies).



Formalin-fixed and paraffin-embedded human hepatocarcinoma tissue reacted with *ALDH6A1 antibody (C-term), which was peroxidase-conjugated to the secondary antibody, followed by DAB staining. This data demonstrates the use of this antibody for immunohistochemistry; clinical relevance has not been evaluated.

ALDH6A1 Antibody (C-term) - Background

ALDH6A1 belongs to the aldehyde dehydrogenases family of proteins. This enzyme plays a role in the valine and pyrimidine catabolic pathways. This protein is a mitochondrial methylmalonate semialdehyde dehydrogenase, and catalyzes the irreversible oxidative decarboxylation of malonate and methylmalonate semialdehydes to acetyl- and propionyl-CoA. Methylmalonate semialdehyde dehydrogenase deficiency is characterized by elevated beta-alanine, 3-hydroxypropionic acid, and both isomers of 3-amino and 3-hydroxyisobutyric acids in urine organic acids.

ALDH6A1 Antibody (C-term) - References

- Kuiper,H., Cytogenet. Genome Res. 109 (4), 533 (2005)
- Anderson,N.L., Mol. Cell Proteomics 3 (4), 311-326 (2004)
- Chambliss,K.L., J. Inherit. Metab. Dis. 23 (5), 497-504 (2000)
- Kedishvili,N.Y., J. Biol. Chem. 267 (27), 19724-19729 (1992)