

**ALDH3A2 Antibody**  
**Affinity Purified Rabbit Polyclonal Antibody (Pab)**  
**Catalog # AP1468D**

**Specification**

---

**ALDH3A2 Antibody - Product Information**

Application	<b>WB, IHC-P,E</b>
Primary Accession	<a href="#">P51648</a>
Reactivity	<b>Human</b>
Host	<b>Rabbit</b>
Clonality	<b>Polyclonal</b>
Isotype	<b>Rabbit IgG</b>
Calculated MW	<b>54848</b>

**ALDH3A2 Antibody - Additional Information**

**Gene ID** 224

**Other Names**

Fatty aldehyde dehydrogenase, Aldehyde dehydrogenase 10, Aldehyde dehydrogenase family 3 member A2, Microsomal aldehyde dehydrogenase, ALDH3A2, ALDH10, FALDH

**Target/Specificity**

This ALDH3A2 antibody is generated from rabbits immunized with human ALDH3A2 recombinant protein.

**Dilution**

WB~~1:1000  
IHC-P~~1:50~100

**Format**

Purified polyclonal antibody supplied in PBS with 0.09% (W/V) sodium azide. This antibody is purified through a protein A column, followed by peptide affinity purification.

**Storage**

Maintain refrigerated at 2-8°C for up to 2 weeks. For long term storage store at -20°C in small aliquots to prevent freeze-thaw cycles.

**Precautions**

ALDH3A2 Antibody is for research use only and not for use in diagnostic or therapeutic procedures.

**ALDH3A2 Antibody - Protein Information**

**Name** ALDH3A2

**Function** Catalyzes the oxidation of medium and long chain aliphatic aldehydes to fatty acids. Active on a variety of saturated and unsaturated aliphatic aldehydes between 6 and 24 carbons in length (PubMed:[18035827](#), PubMed:[18182499](#), PubMed:[22633490](#), PubMed:[25047030](#),

PubMed:[9133646](#), PubMed:[9662422](#)). Responsible for conversion of the sphingosine 1-phosphate (S1P) degradation product hexadecenal to hexadecenoic acid (PubMed:[22633490](#)).

#### Cellular Location

Microsome membrane; Single-pass membrane protein. Endoplasmic reticulum membrane; Single-pass membrane protein; Cytoplasmic side {ECO:0000250|UniProtKB:P30839}

#### Tissue Location

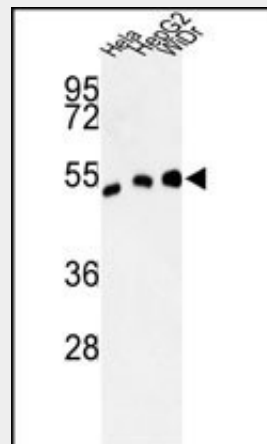
Detected in liver (at protein level).

### ALDH3A2 Antibody - Protocols

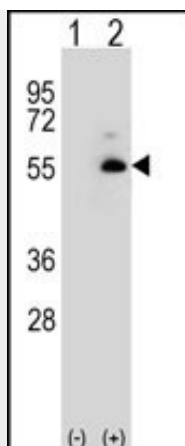
Provided below are standard protocols that you may find useful for product applications.

- [Western Blot](#)
- [Blocking Peptides](#)
- [Dot Blot](#)
- [Immunohistochemistry](#)
- [Immunofluorescence](#)
- [Immunoprecipitation](#)
- [Flow Cytometry](#)
- [Cell Culture](#)

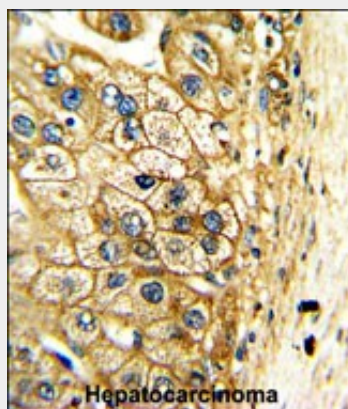
### ALDH3A2 Antibody - Images



Western blot analysis of ALDH3A2 Antibody (Cat. #AP1468d) in HeLa, HepG2, WiDr cell line lysates (35ug/lane). ALDH3A2 (arrow) was detected using the purified Pab.



Western blot analysis of ALDH3A2 (arrow) using rabbit polyclonal ALDH3A2 Antibody (Cat. #AP1468d). 293 cell lysates (2 ug/lane) either nontransfected (Lane 1) or transiently transfected (Lane 2) with the ALDH3A2 gene.



Formalin-fixed and paraffin-embedded human hepatocarcinoma reacted with ALDH3A2 Antibody, which was peroxidase-conjugated to the secondary antibody, followed by DAB staining. This data demonstrates the use of this antibody for immunohistochemistry; clinical relevance has not been evaluated.

### **ALDH3A2 Antibody - Background**

Aldehyde dehydrogenase isozymes are thought to play a major role in the detoxification of aldehydes generated by alcohol metabolism and lipid peroxidation. ALDH3A2 catalyzes the oxidation of long-chain aliphatic aldehydes to fatty acid. Mutations in the gene cause Sjogren-Larsson syndrome.

### **ALDH3A2 Antibody - References**

- Chang, C., et al., *Genomics* 40(1):80-85 (1997).
- Rogers, G.R., et al., *Genomics* 39(2):127-135 (1997).
- De Laurenzi, V., et al., *Nat. Genet.* 12(1):52-57 (1996).
- Rogers, G.R., et al., *Am. J. Hum. Genet.* 57(5):1123-1129 (1995).
- Pigg, M., et al., *Nat. Genet.* 8(4):361-364 (1994).