

**Latexin Antibody (N-term)**  
**Affinity Purified Rabbit Polyclonal Antibody (Pab)**  
**Catalog # AP1467a**

**Specification**

---

**Latexin Antibody (N-term) - Product Information**

|                   |                        |
|-------------------|------------------------|
| Application       | <b>WB, IHC-P,E</b>     |
| Primary Accession | <a href="#">O9BS40</a> |
| Reactivity        | <b>Human</b>           |
| Host              | <b>Rabbit</b>          |
| Clonality         | <b>Polyclonal</b>      |
| Isotype           | <b>Rabbit IgG</b>      |
| Calculated MW     | <b>25750</b>           |
| Antigen Region    | <b>23-53</b>           |

**Latexin Antibody (N-term) - Additional Information**

**Gene ID** 56925

**Other Names**

Latexin, Endogenous carboxypeptidase inhibitor, ECI, Protein MUM, Tissue carboxypeptidase inhibitor, TCI, LXN

**Target/Specificity**

This Latexin antibody is generated from rabbits immunized with a KLH conjugated synthetic peptide between 23-53 amino acids from the N-terminal region of human Latexin.

**Dilution**

WB~~1:1000  
IHC-P~~1:10~50

**Format**

Purified polyclonal antibody supplied in PBS with 0.09% (W/V) sodium azide. This antibody is purified through a protein A column, followed by peptide affinity purification.

**Storage**

Maintain refrigerated at 2-8°C for up to 2 weeks. For long term storage store at -20°C in small aliquots to prevent freeze-thaw cycles.

**Precautions**

Latexin Antibody (N-term) is for research use only and not for use in diagnostic or therapeutic procedures.

**Latexin Antibody (N-term) - Protein Information**

**Name** LXN

**Function** Hardly reversible, non-competitive, and potent inhibitor of CPA1, CPA2 and CPA4. May

play a role in inflammation.

#### Cellular Location

Cytoplasm.

#### Tissue Location

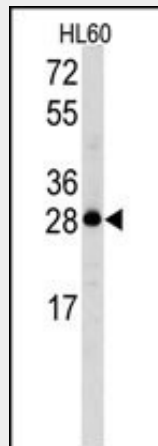
Highly expressed in heart, prostate, ovary, kidney, pancreas, and colon, moderate or low in other tissues including brain

#### Latexin Antibody (N-term) - Protocols

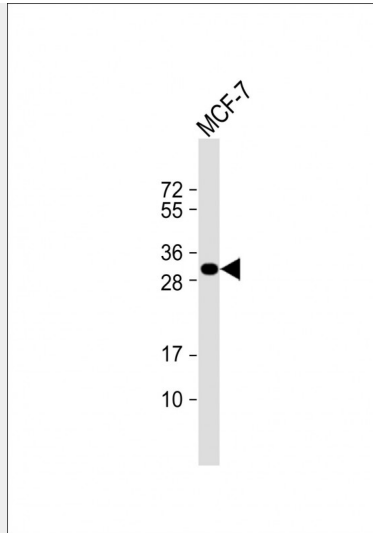
Provided below are standard protocols that you may find useful for product applications.

- [Western Blot](#)
- [Blocking Peptides](#)
- [Dot Blot](#)
- [Immunohistochemistry](#)
- [Immunofluorescence](#)
- [Immunoprecipitation](#)
- [Flow Cytometry](#)
- [Cell Culture](#)

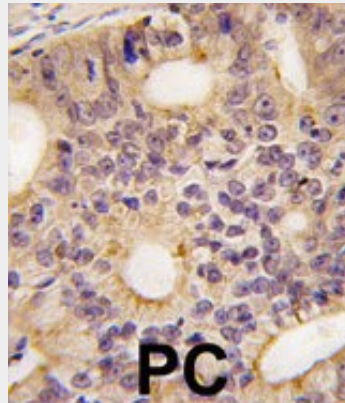
#### Latexin Antibody (N-term) - Images



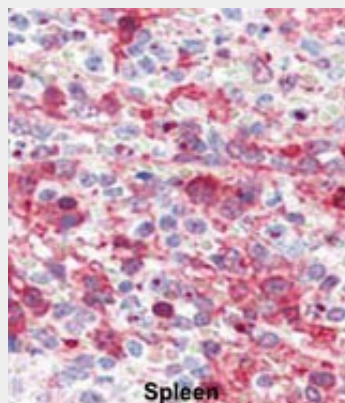
Western blot analysis of Latexin Antibody (N-term) (Cat.#AP1467a) in HL60 cell line lysates (35ug/lane). Latexin (arrow) was detected using the purified Pab.



Anti-Latexin Antibody (N-term) at 1:1000 dilution + MCF-7 whole cell lysate Lysates/proteins at 20 µg per lane. Secondary Goat Anti-Rabbit IgG, (H+L), Peroxidase conjugated at 1/10000 dilution. Predicted band size : 26 kDa Blocking/Dilution buffer: 5% NFDM/TBST.



Formalin-fixed and paraffin-embedded human prostata carcinoma tissue reacted with Latexin antibody (N-term), which was peroxidase-conjugated to the secondary antibody, followed by DAB staining. This data demonstrates the use of this antibody for immunohistochemistry; clinical relevance has not been evaluated.



Formalin-fixed and paraffin-embedded human Spleen tissue reacted with Latexin antibody (N-term)(Cat.#AP1467a), which was peroxidase-conjugated to the secondary antibody, followed by AEC staining. This data demonstrates the use of this antibody for immunohistochemistry; clinical relevance has not been evaluated.

**Latexin Antibody (N-term) - Background**

Latexin possesses nearly irreversible, non-competitive and potent inhibition of zinc-dependent metallopeptidases CPA1, CPA2, and CPA4. It is expressed in a neuronal subset in the cerebral cortex and cells in other neural and non-neural tissues of rat. Latexin plays a role in regional specification and/or morphogenesis of the forebrain.

**Latexin Antibody (N-term) - References**

Pallares, I., Proc. Natl. Acad. Sci. U.S.A. 102 (11), 3978-3983 (2005)